

A000549062

OFFICE OF COUNTY RECORDER
CASS COUNTY MINNESOTA

CERTIFIED, FILED, AND/OR
RECORDED ON
05/12/2009 03:29:36PM

AS DOC #: A000549062
PAGES: 2
REC FEES: \$0.00

KATHRYN M. NORBY
COUNTY RECORDER

BY Kathryn M Norby DEPUTY
mw

Index No. A-15

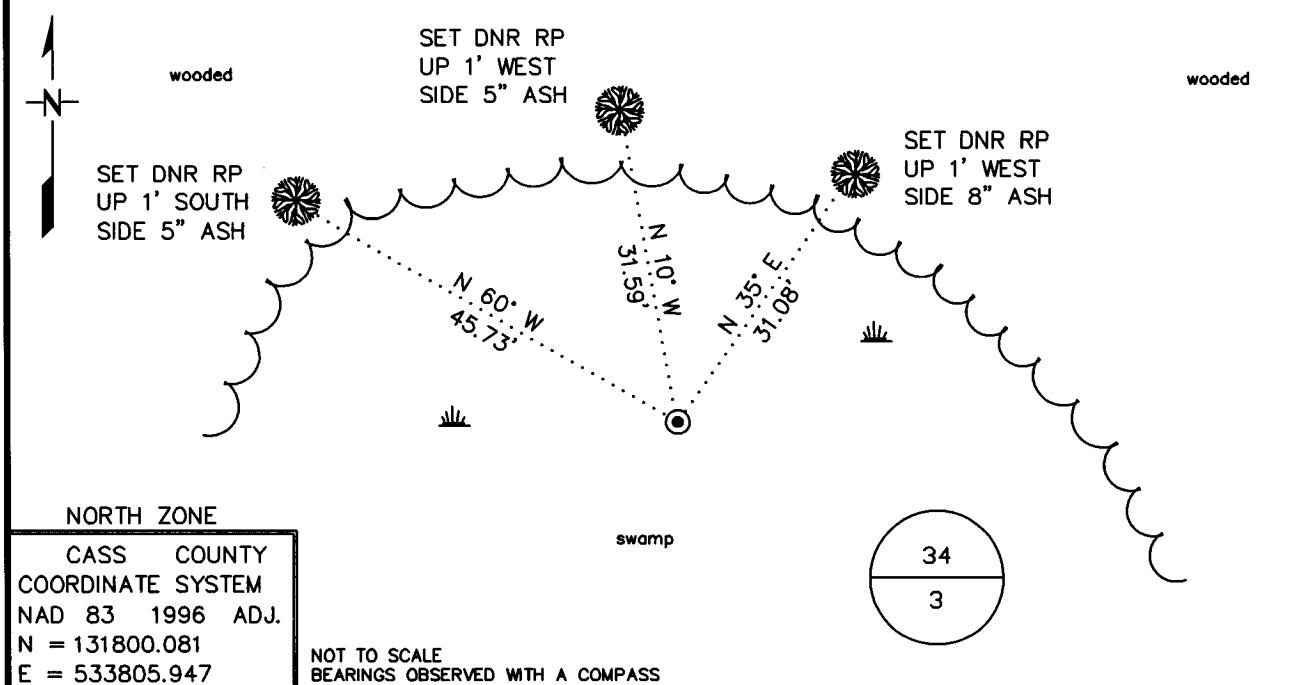
CERTIFICATE OF LOCATION OF GOVERNMENT CORNER

NORTH QUARTER Corner of Section 3, Township 139 N, Range 27 W

5TH Principal Meridian, State of Minnesota, County of CASS

At the corner location shown on the sketch:

- On _____ found a _____
DATE
- left monument as found, lowered monument, removed monument (explain)
- On 10/1/08 Placed a 2" X 42" OUTSIDE DIAMETER IRON PIPE UP 1'
DATE
IN SMALL MARSH



Statement of evidence for this corner location is on back of this page.

RAL DECEMBER 2008
WMA00844

I certify that this document was researched and prepared by me or under my direct supervision.

SIGNATURE Joseph Fleischer DATE 4/28/09 License Number 44974

Title: Land Surveyor Professional Engineer County Surveyor County Engineer

PAGE 1 OF 2 PAGES

STATEMENT OF EVIDENCE**North Quarter Corner Section 3, Township 139 North, Range 27 West, 5th P.M.**

The Department of Natural Resources, Division of Lands and Minerals, contacted the following offices for information regarding this corner:

MN Secretary of State
 Cass County Recorder
 Cass County Surveyor
 Landecker & Associates Inc.
 Washburn Lake DNR Forestry

1863 The US General Land Office field notes, on file in the Secretary of State's Office, indicate a post set at the corner with the following bearing trees:

4" Spruce	North	15 Links (9.9')
10" Tamarack	S 27° W	11 Links (7.26')

1936 Civilian Conservation Corps field notes Book 7, page 20, located at the Washburn DNR Forestry office show a survey for the north line of Section 3. A distance of 82.70 chains was measured for the north line of the section. They did not find anything for this corner, nor did they mention if they performed a search for this corner.

2008 In October, the DNR survey crew searched and found no evidence of the corner or accessories. The corner was determined lost and established by the single proportion method between the Northeast corner of Section 4 and the Northeast corner of Section 3. A 2"x 42" outside diameter iron pipe was set and ties were taken.

Northeast corner of Section 4 bears N 89°46'06" W 2626.73'
 Northeast corner of Section 3 bears S 89°46'06" E 2626.73'

For more information on our survey in this area, please contact the MN DNR, Division of Lands and Minerals, Survey Section, 1601 Minnesota Drive, Brainerd, MN 56401