

A000549061

OFFICE OF COUNTY RECORDER
CASS COUNTY MINNESOTA

CERTIFIED, FILED, AND/OR
RECORDED ON
05/12/2009 03:29:35PM

AS DOC #: A000549061
PAGES: 2
REC FEES: \$0.00

KATHRYN M. NORBY
COUNTY RECORDER

BY Kathryn M Norby DEPUTY
mn

Index No. X-17

CERTIFICATE OF LOCATION OF GOVERNMENT CORNER

EAST QUARTER Corner of Section 34, Township 140 N, Range 27 W

5TH Principal Meridian, State of Minnesota, County of CASS

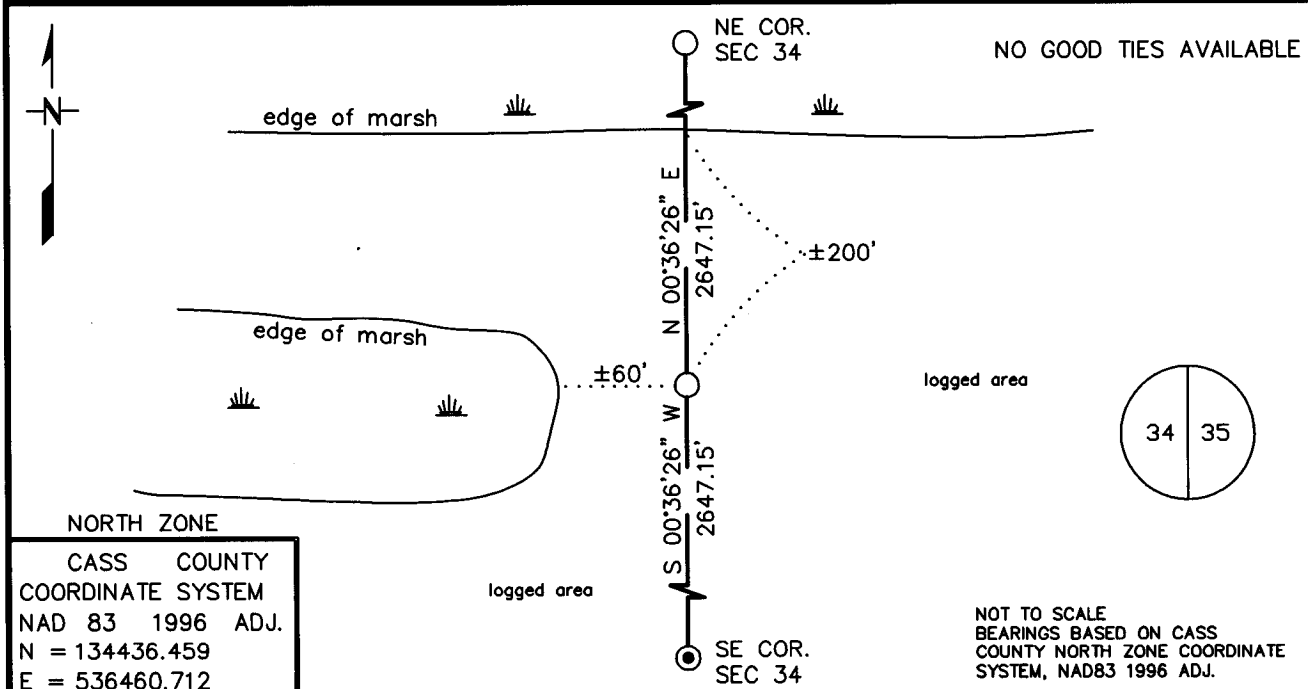
At the corner location shown on the sketch:

On _____ found a _____
DATE

left monument as found, lowered monument, removed monument (explain)

On 1/28/09 Placed a 3/4" X 24" REBAR WITH SURVEY CAP STAMPED
DATE

"MN DNR LS 44974" UP 0.2'



NORTH ZONE
CASS COUNTY
COORDINATE SYSTEM
NAD 83 1996 ADJ.
N = 134436.459
E = 536460.712

NOT TO SCALE
BEARINGS BASED ON CASS
COUNTY NORTH ZONE COORDINATE
SYSTEM, NAD83 1996 ADJ.

Statement of evidence for this corner location is on back of this page. RAL JANUARY 2009 WMA00844

I certify that this document was researched and prepared by me or under my direct supervision.

SIGNATURE Joseph A Fleider DATE 4/28/09 License Number 44974

Title: Land Surveyor Professional Engineer County Surveyor County Engineer

STATEMENT OF EVIDENCE**East Quarter Corner Section 34, Township 140 North, Range 27 West, 5th P.M.**

The Department of Natural Resources, Division of Lands and Minerals, contacted the following offices for information regarding this corner:

MN Secretary of State
 Cass County Recorder
 Cass County Surveyor
 Landecker & Associates Inc.
 Washburn Lake DNR Forestry

1873 The US General Land Office field notes, on file in the Secretary of State's Office, indicate a post set at the corner with the following bearing trees:

6" J. Pine	S 36°30' E	7 Links (4.62')
5" J. Pine	N 52° W	5 Links (3.3')

2008 In September, the DNR survey crew searched for evidence of the corner and found nothing.

2009 In January, the DNR determined the corner lost and the survey crew set a ¾" x 24" rebar with survey cap stamped "MN DNR LS 44974" to mark the corner. No good ties were available.

The Northeast corner of Section 34 bears N 00°36'26" E 2647.15'
 The Southeast corner of Section 34 bears S 00°36'26" W 2647.15'

For more information on our survey in this area, please contact the MN DNR, Division of Lands and Minerals, Survey Section, 1601 Minnesota Drive, Brainerd, MN 56401