

A000549055

OFFICE OF COUNTY RECORDER
CASS COUNTY MINNESOTA

CERTIFIED, FILED, AND/OR
RECORDED ON
05/12/2009 03:29:29PM

AS DOC #: A000549055
PAGES: 2
REC FEES: \$0.00

KATHRYN M. NORBY
COUNTY RECORDER

BY Kathryn M Norby DEPUTY
nmw

Index No. V-17

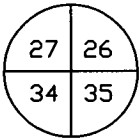
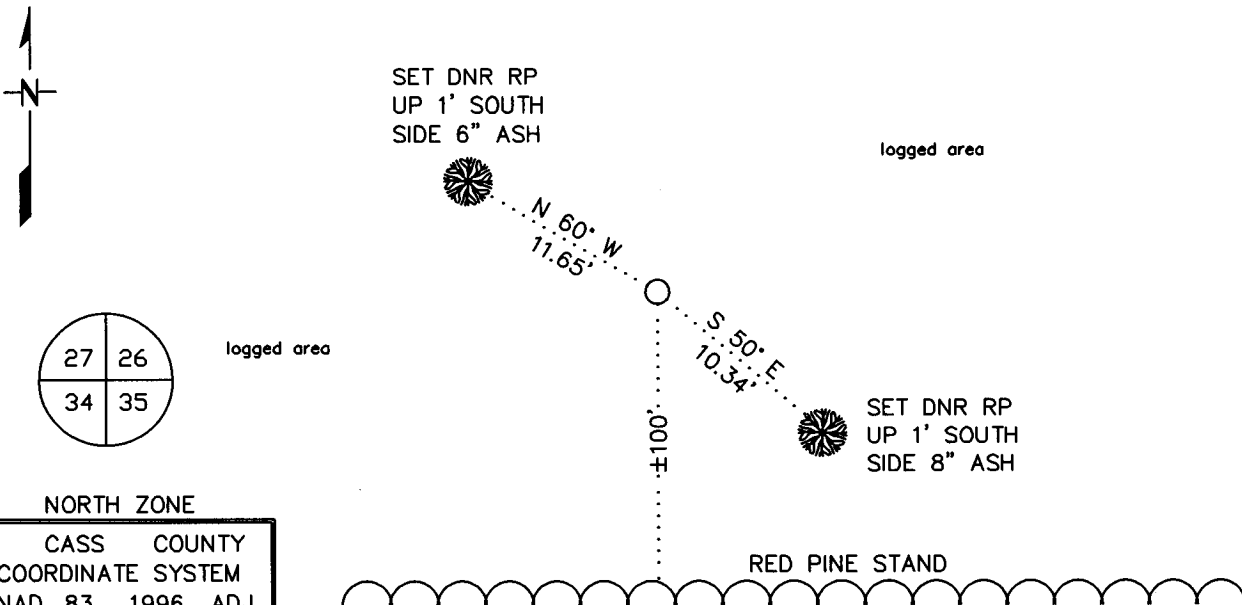
CERTIFICATE OF LOCATION OF GOVERNMENT CORNER

NORTHEAST Corner of Section 34, Township 140 N, Range 27 W

5TH Principal Meridian, State of Minnesota, County of CASS

At the corner location shown on the sketch:

- On _____ found a _____
DATE
- left monument as found, lowered monument, removed monument (explain)
- On 1/28/09 Placed a 3/4" X 24" REBAR WITH SURVEY CAP STAMPED
DATE
"MN DNR LS 44974" UP 0.2' IN LOGGED AREA



NORTH ZONE
CASS COUNTY
COORDINATE SYSTEM
NAD 83 1996 ADJ.
N = 137083.463
E = 536488.765

NOT TO SCALE
BEARINGS OBSERVED WITH A COMPASS

Statement of evidence for this corner location is on back of this page.

RAL JANUARY 2009
WMA00844

I certify that this document was researched and prepared by me or under my direct supervision.

SIGNATURE Joseph J Fleish DATE 4/28/09 License Number 44974

Title: Land Surveyor Professional Engineer County Surveyor County Engineer

STATEMENT OF EVIDENCE**Northeast Corner Section 34, Township 140 North, Range 27 West, 5th P.M.**

The Department of Natural Resources, Division of Lands and Minerals, contacted the following offices for information regarding this corner:

MN Secretary of State
 Cass County Recorder
 Cass County Surveyor
 Landecker & Associates Inc.
 Washburn Lake DNR Forestry

1873 The US General Land Office field notes, on file in the Secretary of State's Office, indicate a post set at the corner with the following bearing trees:

6" J. Pine	S 43°15' E	39 Links (25.74')
10" J. Pine	N 48° E	20 Links (13.2')
8" J. Pine	S 37°30' W	9 Links (5.94')

1990 Landecker & Associates established the corner by double proportion method using the Northeast corner of Section 33 and the North Quarter corner of Section 35 for the east-west direction, and the Northeast corner of Section 27 and the Southeast corner of Section 34 for the north-south direction for a survey of "Stevens Lake Homesites" for the DNR. No monument was set to perpetuate the corner location.

2008 In September, the DNR survey crew searched for evidence of the corner and found nothing.

2009 In January, the DNR survey crew set a ¾" x 24" rebar with survey cap stamped "MN DNR LS 44974" using a double proportion method from the Northeast corner of Section 33 and the North Quarter corner of Section 35 for the east-west direction, and the Northeast corner of Section 27 and the Southeast corner of Section 34 for the north-south direction. The rebar fell approximately 100' north of a red pine stand and ties were taken.

For more information on our survey in this area, please contact the MN DNR, Division of Lands and Minerals, Survey Section, 1601 Minnesota Drive, Brainerd, MN 56401