

A000549050

OFFICE OF COUNTY RECORDER  
CASS COUNTY MINNESOTA

CERTIFIED, FILED, AND/OR  
RECORDED ON  
05/12/2009 03:29:24PM

AS DOC #: A000549050  
PAGES: \* 2mw  
REC FEES: \$0.00

KATHRYN M. NORBY  
COUNTY RECORDER

BY Kathryn M Norby  
DEPUTY  
mw

Index No. X-13

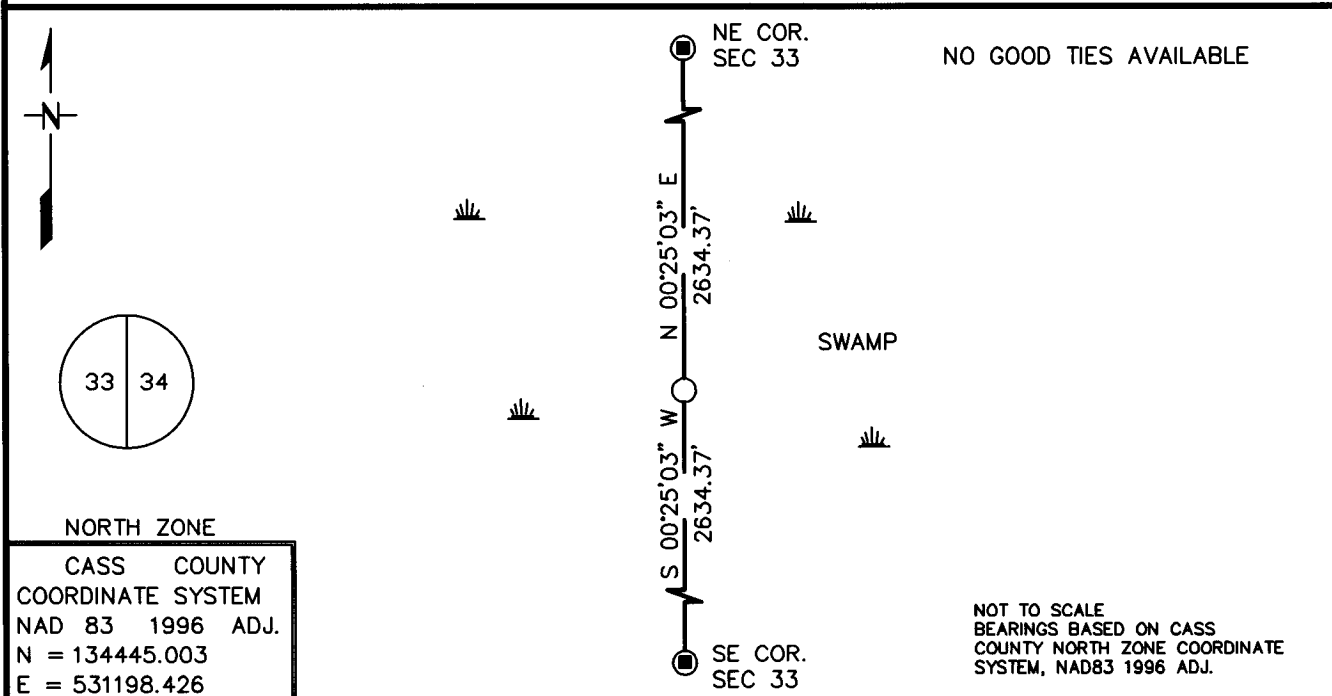
# CERTIFICATE OF LOCATION OF GOVERNMENT CORNER

EAST QUARTER Corner of Section 33, Township 140 N, Range 27 W

5TH Principal Meridian, State of Minnesota, County of CASS

At the corner location shown on the sketch:

- On \_\_\_\_\_ found a \_\_\_\_\_  
DATE
- left monument as found,  lowered monument,  removed monument (explain)
- On 1/28/09 Placed a 1" X 72" INSIDE DIAMETER IRON PIPE WITH SURVEY CAP  
DATE  
STAMPED "MN DNR LS 44974" UP 1' IN SWAMP



Statement of evidence for this corner location is on back of this page.

RAL JANUARY 2009  
WMA00844

I certify that this document was researched and prepared by me or under my direct supervision.

SIGNATURE Joseph D Fleisher DATE 4/28/09 License Number 44974

Title:  Land Surveyor  Professional Engineer  County Surveyor  County Engineer

STATEMENT OF EVIDENCE**East Quarter Corner Section 33, Township 140 North, Range 27 West, 5<sup>th</sup> P.M.**

The Department of Natural Resources, Division of Lands and Minerals, contacted the following offices for information regarding this corner:

MN Secretary of State  
Cass County Recorder  
Cass County Surveyor  
Landecker & Associates Inc.  
Washburn Lake DNR Forestry

1873 The US General Land Office field notes, on file in the Secretary of State's Office, indicate a post set at the corner with the following bearing trees:

8" Tamarack N 56°40' W 16 Links (10.56')  
9" Tamarack S 72°50' E 12 Links (7.92')

2009 In January, the DNR survey crew searched for evidence of the corner and found nothing. The corner was determined lost and a 1" x 72" inside diameter iron pipe with survey cap stamped "MN DNR LS 44974" was set up 1' in a swamp to mark the corner. No good ties available.

The Northeast corner of Section 33 bears N 00°25'03" E 2634.37'  
The Southeast corner of Section 33 bears S 00°25'03" W 2634.37'

For more information on our survey in this area, please contact the MN DNR, Division of Lands and Minerals, Survey Section, 1601 Minnesota Drive, Brainerd, MN 56401