

I HEREBY CERTIFY THAT THIS DOCUMENT AND THE DATA CONTAINED HEREIN WAS PREPARED BY ME OR UNDER MY DIRECT SUPERVISION.

[Signature] 12/11/08
SIGNATURE DATE

LICENSE NO. 42619

LAND SURVEYOR PROFESSIONAL ENGINEER
 COUNTY SURVEYOR COUNTY ENGINEER

NAD 1983/1996 CASS COUNTY COORDINATES
N=336869.943 E= 517775.876

A000545719

OFFICE OF COUNTY RECORDER
CASS COUNTY MINNESOTA

CERTIFIED, FILED, AND/OR
RECORDED ON
01/21/2009 02:41:47PM

AS DOC #: A000545719
PAGES: 2
REC FEES: \$0.00

KATHRYN M. NORBY
COUNTY RECORDER

BY [Signature] DEPUTY

CERTIFICATE OF LOCATION OF GOVERNMENT CORNER

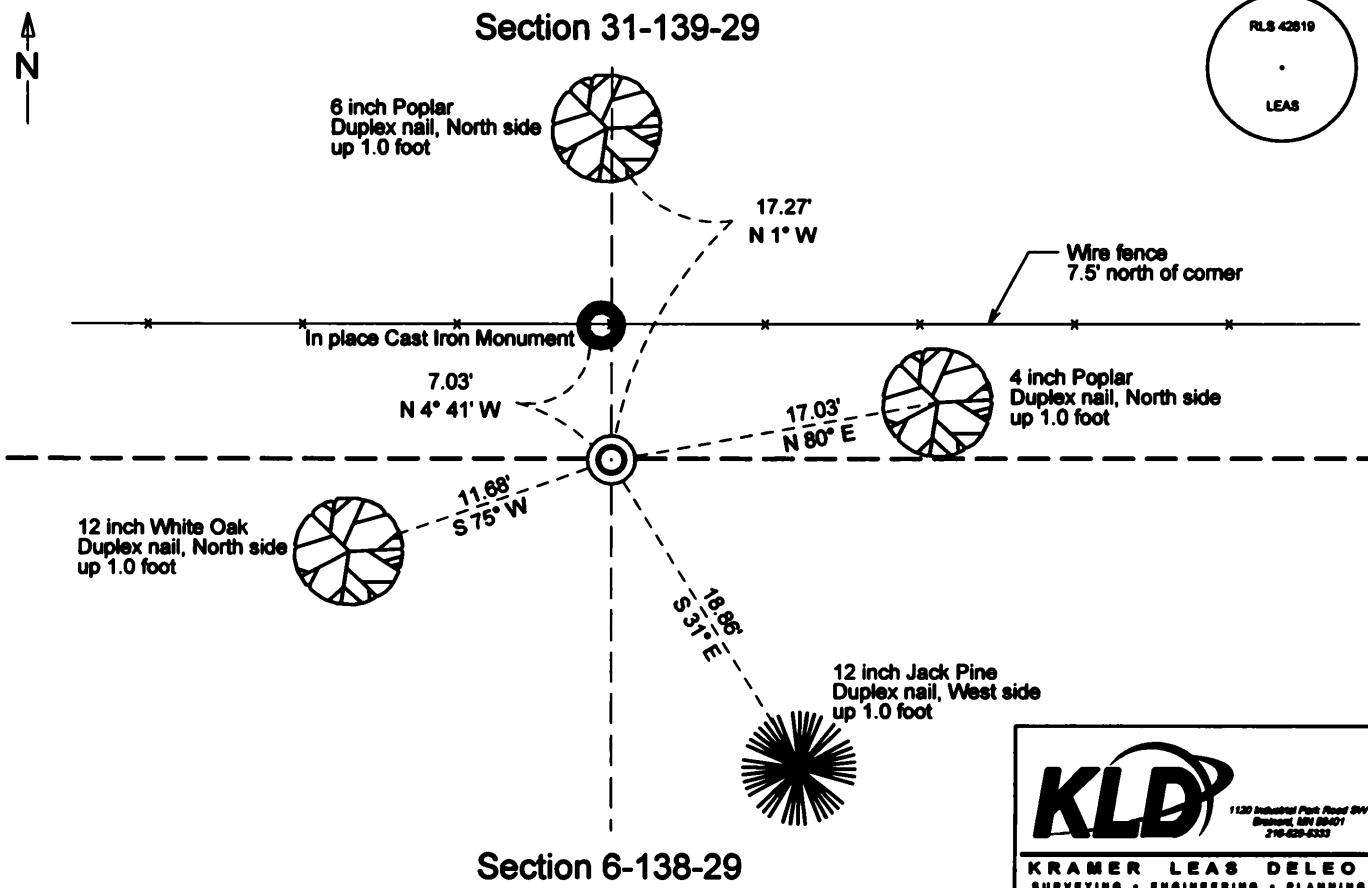
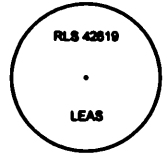
INDEX NO. A-3, North Quarter CORNER OF SECTION 6, TOWNSHIP 138, RANGE 29, 5TH P.M.
STATE OF MINNESOTA, COUNTY OF CASS

AT THE CORNER LOCATION SHOWN ON THE SKETCH:

- ON 10/08/08 DATE FOUND A(N) Cast Iron Monument
- LEFT MONUMENT AS FOUND, LOWERED MONUMENT, REMOVED MONUMENT (EXPLAIN)
- ON 12/02/08 DATE PLACED A(N) 1/2 inch x 16 inch iron pipe, with plastic RLS cap

SKETCH OF REFERENCE TIES

MONUMENT MARKED:



KLD
1120 Industrial Park Road SW
Brainerd, MN 56401
218-829-6333

KRAMER LEAS DELEO
SURVEYING • ENGINEERING • PLANNING
BRainerd ST. CLOUD

STATEMENT OF EVIDENCE RELATIVE TO THIS CORNER LOCATION IS ON BACK OF PAGE

Index No. 13829A.0-03.0

Statement of Evidence

North Quarter corner of Section 6, Township 138 North, Range 29 West, 5th Principal Meridian.

- Jul. 20, 1865 G.B. Wright, General Land Office Deputy Surveyor in the notes of the north boundary of Township 138, North, Range 29 West set a post for the original corner and referenced it as follows:
15" N Pine N 45 deg. E 6 links (3.96 feet), 12" N Pine South 4 links (2.64 feet)
Said records are on file with the Secretary of State, St Paul, Minnesota, copies are filed With the Cass County Surveyor's Office (CCSO).
- Nov. 14, 1910 A.W. Moulster, Township Road Order, on file in the CCSO, indicates the road to be on the section line.
- Feb. 19 1918 J.W. Curo, RLS 1428, County Surveyor, working on a road order for Barclay Township, Curo Film Roll 13, Book 206, Page 79, on file in the CCSO, states "I find two stumps not marked which I am sure is the BT's, but as Moulster did not find them when he surveyed this line 6 years ago I will not use them." Page 93 states "At random hub 2658.00 W we chain E 0.30 of a foot to 2657.70 W, where I set transit, Turn 90 deg. To random and run N 4.44 feet where I set small hub for true ¼ cor". New witnesses were added as follows:
5" J. Pine S 39 deg. 35 min. W 18.30 feet 6" J. Pine N 23 deg. 15 min. W 38.60 feet
- June 10 1998 R. Mustonen, LS 11946, Certificate of Survey, on file in the CCSO, indicates a monument in place, 2893.53 feet East of the Northwest corner of said Section 6.
- Oct. 29 1998 R. Mustonen, LS 11946, Certificate of Survey, on file in the CCSO, indicates a monument in place, 2893.53 feet East of the Northwest corner of said Section 6.
- Nov. 15 2004 D. Landecker, LS 17008, Certificate of Survey, on file in the CCSO, indicates a monument in place, 2894.70 feet East of the Northwest corner of said Section 6.
- Nov. 30, 2005 B. Hippen, CCSO technician, records of the CCSO, recovered a cast iron monument (CIM) and remains of the 1918 Curo southwest J. Pine BT. The recovered CIM is N 9 deg. W 6+/- feet from location based on 1918 BT.
- Oct. 08, 2008 J. Leas, LS 42619, recovered cast iron monument, and the remains of both 1918 Curo BT's.
- Dec. 02, 2008 J. Leas, LS 42619, sets a ½ inch x 16 inch iron pipe monument with a plastic cap marked RLS 42619 using the two 1918 Curo BT's to compute the position. And witnessed as follows:
6 inch Poplar N 1 deg. W 17.27 feet. 4 inch Poplar N 80 deg. E 17.03 feet.
12 inch White Oak S 75 deg. W 11.68 feet. 12 inch J. Pine S 31 deg. E 18.86 feet.

The monument, recovered and established references for the position are shown on the face of this document.

Analysis of the recovered data, field evidence and survey measurements, indicate that the monument set by J. Leas in 2008 is the correct perpetuation of this corner.