

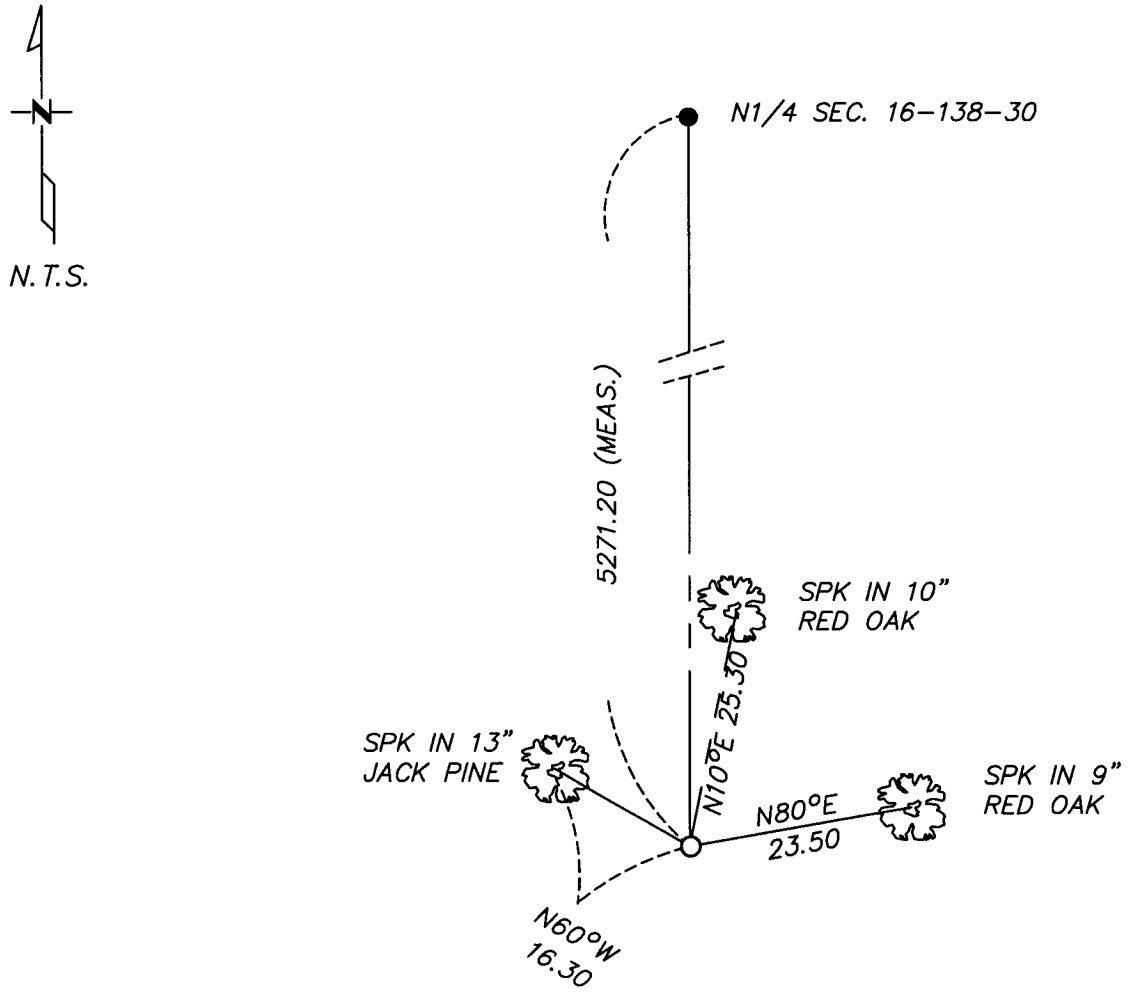
# CERTIFICATE OF LOCATION OF GOVERNMENT CORNER

N 1/4 Corner of Section 21, Township 138, Range 30  
5TH Principal Meridian, State of Minnesota, County of Cass

At the corner location shown on the sketch:

- On \_\_\_\_\_ found a \_\_\_\_\_  
DATE
- left monument as found     lowered monument     removed monument (explain)
- On 2-10-05 placed a 1/2" PIPE CAPPED RLS 17253  
DATE

## SKETCH OF REFERENCE TIES



N.T.S.

Statement of evidence relative to this corner location is on back of page.

I hereby certify that this document and the data contained herein was prepared by me or under my direct supervision.

[Signature]      7/13/05  
SIGNATURE      DATE  
Registration No. 43932

- Land Surveyor     Professional Engineer
- County Surveyor     County Engineer

OFFICE OF THE COUNTY RECORDER  
County of \_\_\_\_\_

I hereby certify that this document was filed in the Co. Recorders office at \_\_\_\_\_ M. on the \_\_\_\_\_ day of \_\_\_\_\_ A.D., 20\_\_\_\_

County Recorder \_\_\_\_\_  
By \_\_\_\_\_, Deputy  
DOCUMENT NO. \_\_\_\_\_

Statement of Evidence

N 1/4, Section 21, T. 138, R. 30 5th P.M.

1865- Set Wood Post

Nov. 1997- R. Mustonen RLS#11946 Certificate of Survey shows computed postion.

Dec. 2000- Bruce Grivna RLS#17253 Certificate of Survey shows computed position.

2/10/05- Westwood Professional Services set a 1/2" Pipe Capped RLS 17253,  
the ties to which are shown on the front of this Certificate.

A000535694

OFFICE OF COUNTY RECORDER  
CASS COUNTY MINNESOTA

CERTIFIED, FILED, AND/OR  
RECORDED ON  
02/26/2008 03:50:01PM

AS DOC #: A000535694  
PAGES: 2  
REC FEES: \$0.00

KATHRYN M. NORBY  
COUNTY RECORDER

BY Kathryn M. Norby  
DEPUTY  
SK