

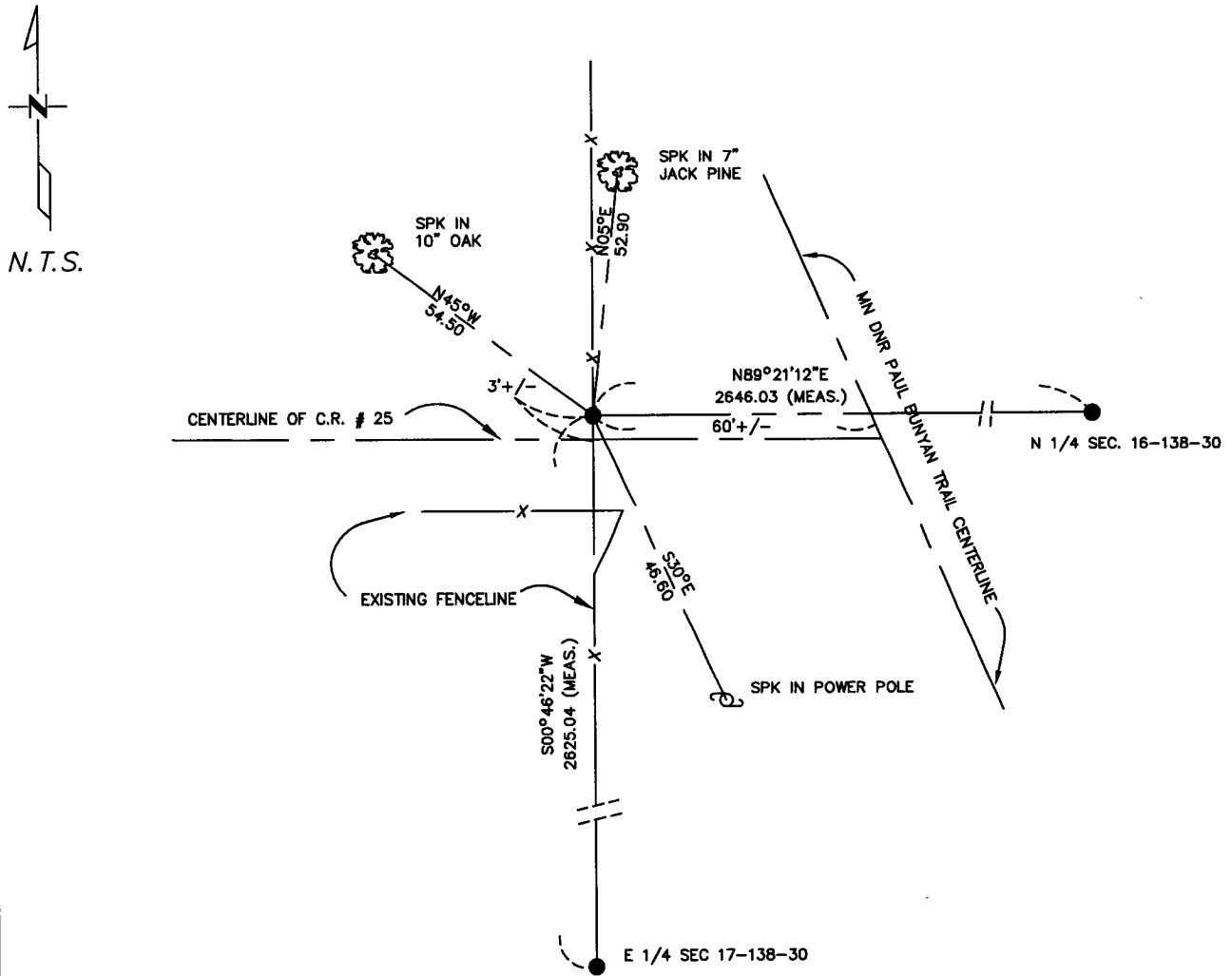
CERTIFICATE OF LOCATION OF GOVERNMENT CORNER

NORTHEAST Corner of Section 17, Township 138, Range 30
5TH Principal Meridian, State of Minnesota, County of Cass

At the corner location shown on the sketch:

- On 2-10-05 found a A 2' PIPE DOWN 1.1'
DATE
- left monument as found lowered monument removed monument (explain)
- On _____ placed a _____
DATE

SKETCH OF REFERENCE TIES



Statement of evidence relative to this corner location is on back of page.

I hereby certify that this document and the data contained herein was prepared by me or under my direct supervision.

[Signature] 2/13/05
SIGNATURE DATE
 Registration No. 43932

- Land Surveyor Professional Engineer
- County Surveyor County Engineer

OFFICE OF THE COUNTY RECORDER
 County of _____

I hereby certify that this document was filed in the Co. Recorders office at _____ M. on the _____ day of _____ A.D., 20____
 County Recorder _____
 By _____, Deputy
 DOCUMENT NO. _____

Statement of Evidence

Northeast Corner, Section 17, T. 138, R. 30 5th P.M.

1865- Set Wood Post

1913- John Curo Set 2"x48" Galvanized Pipe In Concrete from Original Bearing Trees, County Survey Record Book "B" Pg. 289-300

1924- MN. Highway Department found a iron pipe 168.1' W.S.W. from Centerline of Highway

9/02- Bruce Grivna Certificate Shows Iron Monument Found

12/05- Westwood Professional Services Found an Iron Monument In Place

2/10/05 - Westwood Professional Services Found a 2" Iron Pipe In Place. The Ties to which are shown on the front of this Certificate

A000535689

OFFICE OF COUNTY RECORDER
CASS COUNTY MINNESOTA

CERTIFIED, FILED, AND/OR
RECORDED ON
02/26/2008 03:49:56PM

AS DOC #: A000535689
PAGES: 2
REC FEES: \$0.00

KATHRYN M. NORBY
COUNTY RECORDER

BY Kathryn M. Norby DEPUTY
SK