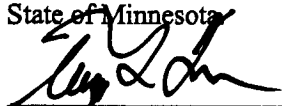


# CERTIFICATE OF LOCATION OF GOVERNMENT CORNER

I hereby certify that this survey, plan, or report was prepared by me or under my direct supervision and that I am a duly Licensed Land Surveyor under the laws of the State of Minnesota.

  
 TERRY L. FREEMAN

Date: 12/17/07 License No: 21367

OFFICE OF THE COUNTY RECORDER  
 County of CASS

I hereby certify that this document was filed in the Office of the County Recorder at \_\_\_\_\_ o'clock \_\_\_\_\_ M. on the \_\_\_\_\_ day of \_\_\_\_\_, 20\_\_\_\_ A.D.

County Recorder \_\_\_\_\_  
 By: \_\_\_\_\_, Deputy  
 DOCUMENT NO. \_\_\_\_\_

NORTH QUARTER Corner of Section 28, Township 142, Range 31, 5TH P.M.

On 4/13/04 found a 2 1/2" IRON PIPE WITH PIPE CAP UP ±1'

left monument as found,  lowered monument,  removed monument (explain)

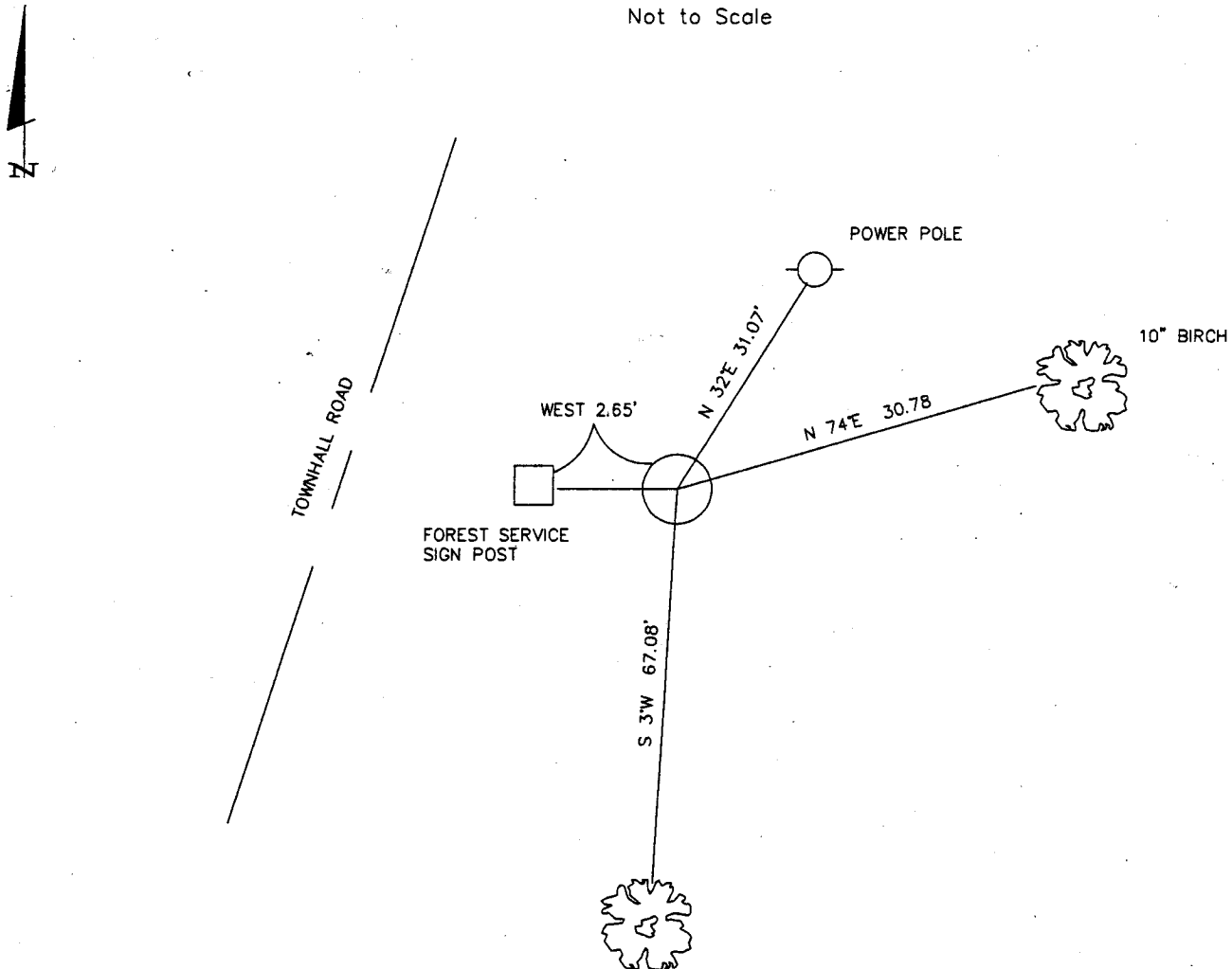
On \_\_\_\_\_ placed a \_\_\_\_\_

decl: 5° EAST (ASSUMED)

## SKETCH OF REFERENCE TIES

INDEX NO. R-11

Not to Scale



THE BEARING TREES WERE MARKED WITH BT TAGS AND NAILS AT BASE.

ALL DISTANCES ARE HORIZONTAL TO NAIL IN BASE OF BEARING TREE.

Statement of evidence for this corner position is on the back of this page

STATEMENT OF EVIDENCE

Index No. R - 11

North Quarter, Section 28, Township 142 North, Range 31 West, Cass County, Minnesota

- 1873 P.H. Conger, U.S. Deputy Surveyor, originally established this corner position while surveying the subdivision and meander lines in Township 142 North, Range 31 West. A wood post was set to mark the corner position with the following witnesses: A 36 inch White Pine, North 86 degrees East, 82 links; A 30 inch White Pine, South 88 degrees West, 126 links.
  
- 1915 County Book "C", pp. 511-515, shows a survey by E.B. Horst. Page 512 shows that John Curo set an iron track spike from the old government B.T.'s. Page 515 shows that the corner was checked then marked with a 2 ¼ inch x 48 inch capped iron monument and witness pits.
  
- 1981 A survey by Gary Stevenson, RLS #12684, shows an iron monument in place, which is of record and on file at Landecker & Associates, Inc., Walker office.
  
- 1998 Rob Main, U.S. Forest Service surveyor, found an iron monument on the East shoulder of township road #19 and set the following witnesses: A 21 inch Red Pine, North 52 degrees East, 115.55 feet; An 8 inch White Oak, South 3 degrees West, 67.08 feet; An 8 foot steel sign post, 2.65 feet West.
  
- 2004 A Landecker and Associates, Inc. survey crew found a 2 ½ inch iron pipe with a pipe cap up ± 1 foot. The southwest bearing tree and forest service sign post set by Rob Main were also found. The following witnesses were established: A Power Pole, North 32 degrees East, 31.07 feet; A 10 inch Birch, North 74 degrees East, 30.78 feet. Landecker & Associates, Inc. accepts the found 2 ½ inch iron pipe with a pip cap as a perpetuation of the original Government corner.

A000533589

OFFICE OF COUNTY RECORDER  
CASS COUNTY MINNESOTA

CERTIFIED, FILED, AND/OR  
RECORDED ON  
12/10/2007 11:55:36AM

AS DOC #: A000533589  
PAGES: 2  
REC FEES: \$0.00

KATHRYN M. NORBY  
COUNTY RECORDER

BY Kathryn M. Norby DEPUTY