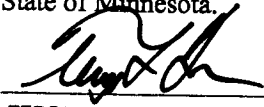


CERTIFICATE OF LOCATION OF GOVERNMENT CORNER

I hereby certify that this survey, plan, or report was prepared by me or under my direct supervision and that I am a duly Licensed Land Surveyor under the laws of the State of Minnesota.



TERRY L. FREEMAN

Date: 12/7/67 License No: 21367

OFFICE OF THE COUNTY RECORDER
County of CASS

I hereby certify that this document was filed in the Office of the County Recorder at _____ o'clock _____ .M. on the _____ day of _____, 20____ A.D.

County Recorder _____

By: _____, Deputy
DOCUMENT NO. _____

EAST QUARTER Corner of Section 21, Township 142, Range 31, 5TH P.M.

On 4/20/04 found a 3/4" IRON PIN DOWN 0.7' IN BITUMINOUS ROAD

left monument as found, lowered monument, removed monument (explain)

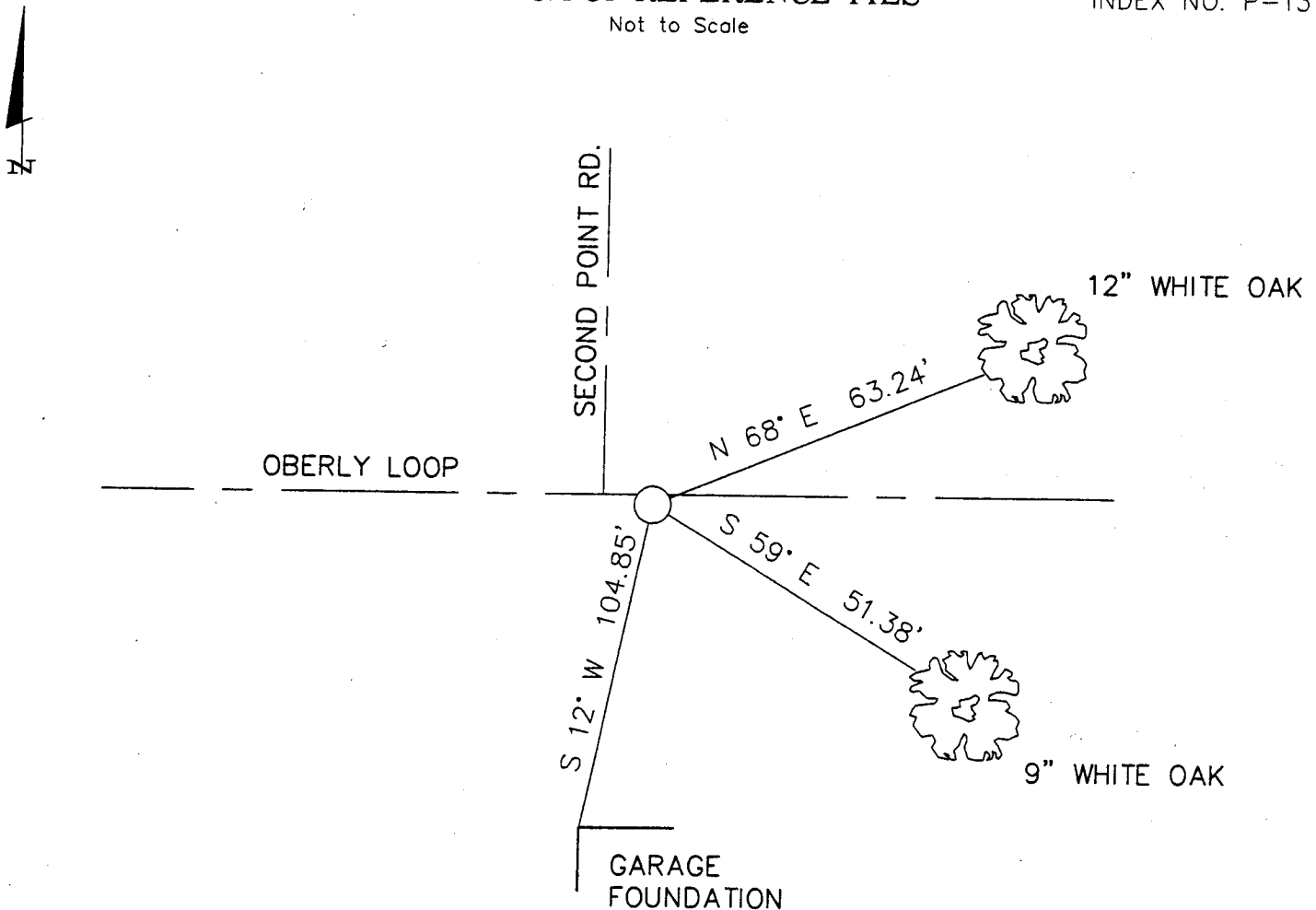
On _____ placed a _____

decl: 5° EAST (ASSUMED)

SKETCH OF REFERENCE TIES

INDEX NO. P-13

Not to Scale



ALL DISTANCES ARE HORIZONTAL
TO NAIL IN BASE OF BEARING TREE.

Statement of evidence for this corner position is on the back of this page

STATEMENT OF EVIDENCE

Index No. P - 13

East Quarter, Section 21, Township 142 North, Range 31
West, Cass County, Minnesota

- 1873 P.H. Congor, U.S. Deputy Surveyor, originally established this corner position while surveying the subdivision and meander lines in Township 142 North, Range 31 West. A post was set for the corner position with the following witnesses: A 4 inch Poplar, North 28 degrees East, 8 links; A 3 inch Poplar, North 79 degrees West, 19 links.
- 1965 County Survey Record Book "D", p. 464, indicates an iron pin by R.F. Schneider, RLS #5740. He established the following witnesses: A 15 inch White Oak, South 65 degrees 10 minutes East, 111.7 feet; the Northwest corner of a garage, South 20 degrees 50 minutes West, 125.2 feet.
- 1971 A survey by R.F. Schneider, RLS #5740, shows a 3/4 inch iron pin in place, which of record and on file at Landecker & Associates, Inc., Walker office
- 1985 A survey by Gary Stevenson, RLS #12684, shows an iron pipe monument in place. File #861 on record at Landecker and Associates, Inc., Walker office.
- 1998 Cass County survey crew found a 3/4 inch pin down 0.7 feet in bituminous located 3 feet South of centerline Oberly Loop and 9.5 feet East of centerline Second Point Road to the North. They found the pin slightly bent. The following witnesses were set: A 12 inch White Oak, North 68 degrees East, 63.24 feet; A 9 inch White Oak, South 59 degrees East, 51.38 feet; the Northwest corner of a garage foundation, South 12 degrees West, 104.85 feet.
- 2000 A Landecker and Associates, Inc. survey crew tied into Gary Stevenson survey and found a 3/4 inch pin down 0.7 in bituminous, which checked with previously stated witnesses set by Cass County survey crew. Landecker & Associates, Inc. accepts the found 3/4 inch pin as established by R.F. Schneider in 1965.

A000533587

**OFFICE OF COUNTY RECORDER
CASS COUNTY MINNESOTA**

**CERTIFIED, FILED, AND/OR
RECORDED ON
12/10/2007 11:55:34AM**

**AS DOC #: A000533587
PAGES: 2
REC FEES: \$0.00**

**KATHRYN M. NORBY
COUNTY RECORDER**

BY Kathryn M. Norby
DEPUTY
SK