

A000530681

OFFICE OF COUNTY RECORDER
CASS COUNTY MINNESOTA

CERTIFIED, FILED, AND/OR
RECORDED ON
09/11/2007 02:31:00PM

AS DOC #: A000530681
PAGES: 2
REC FEES: \$0.00

KATHRYN M. NORBY
COUNTY RECORDER

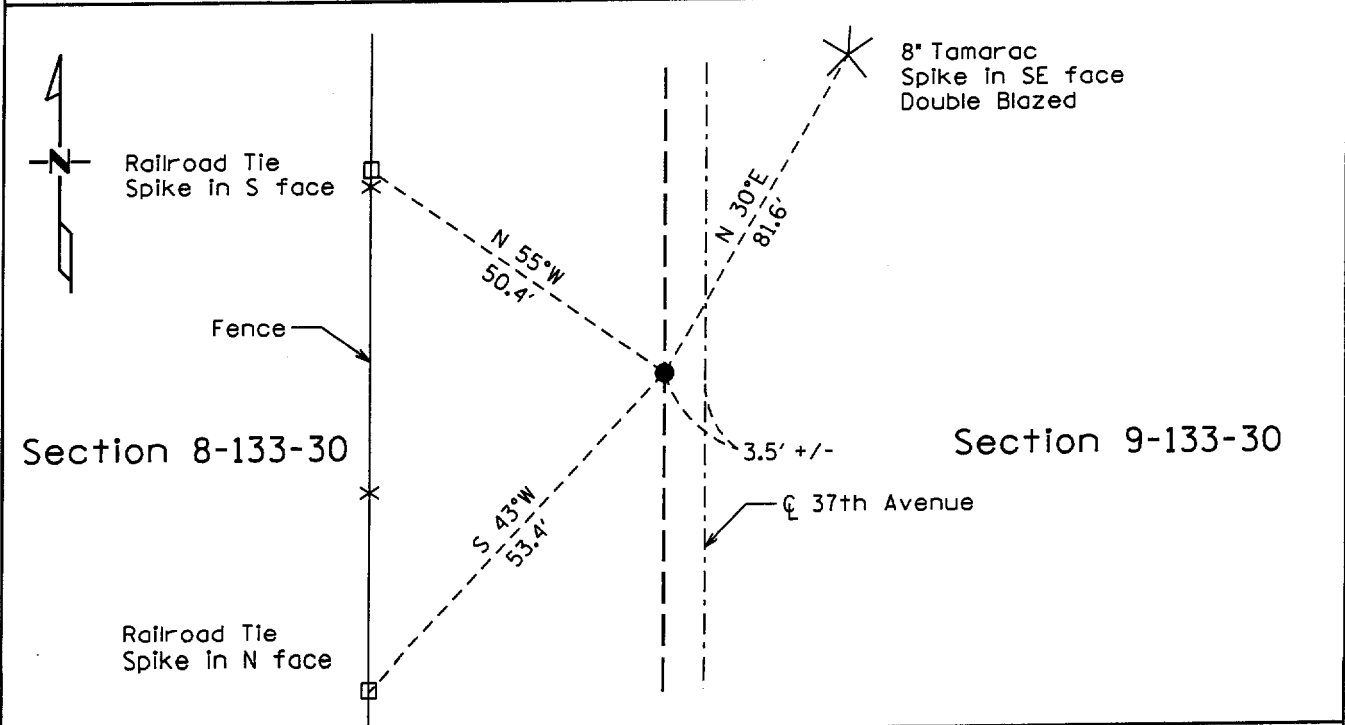
BY Kathryn M. Norby *KT*
DEPUTY

CERTIFICATE OF LOCATION OF GOVERNMENT CORNER

East Quarter Corner of Section 8, Township 133, Range 30
West Principal Meridian, State of Minnesota, County of Cass

At the corner location shown on the sketch:

- On 5-29-07 found a 1/2" Iron pipe monument capped RLS 23619
DATE
- left monument as found lowered monument removed monument (explain)
- On _____ placed a _____
DATE



Statement of evidence for this corner location is on back of this page.

I hereby certify that this document was researched and prepared by me or under my direct supervision.

Signature *James Krum* Date 7-6-2007 License No. 23668
 Title: Land Surveyor Professional Engineer County Surveyor County Engineer

Statement of Evidence:

East Quarter corner of Section 8, Township 133 North, Range 30 West

The Original Public Land Survey was run in 1870 and a wood post was set to mark the corner. Bearing tree ties were made to two Tamaracs.

In 2007 Kramer Leas DeLeo recovered ½" iron pipe monument capped RLS 23619 at the lost position for this corner, and bearing tree ties were made to two railroad ties and a tamarac. Kramer Leas DeLeo accepts this position as the correct location for the corner.

For details and survey analysis contact Kramer Leas DeLeo in Brainerd, Minnesota.