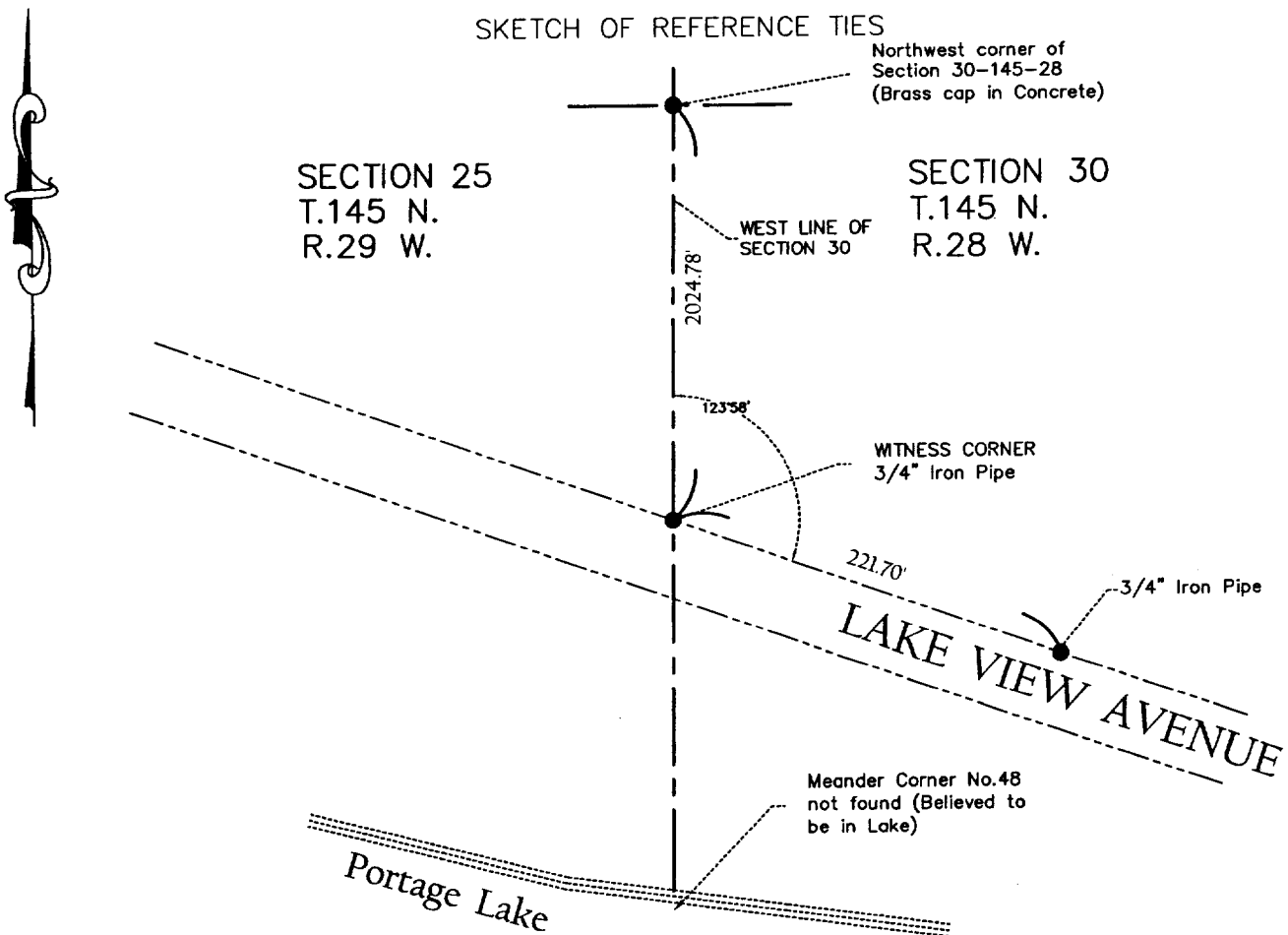


CERTIFICATE OF LOCATION OF GOVERNMENT CORNER

Witness _____ Corner of Section 30, Township 145, Range 28, 5th P.M.
 State of Minnesota, County of CASS

- On 2-14-05 found a Iron Monument at the intersection of the west line of Section 30 with the north line of Lake View Avenue of plat of PORTAGE LAKE
- left monument as found, lowered monument, removed monument (explain)
- On _____ placed a _____

SKETCH OF REFERENCE TIES



Statement of evidence relative to this corner location is on back of page.

I hereby certify that this document and the data contained herein was prepared by me or under my direct supervision.

Guy V. Peterson 10-07-05
 Signature Date

Registration No. 15815
 Land Surveyor, Professional Engineer
 County Surveyor, County Engineer

OFFICE OF THE COUNTY RECORDER
 County of _____

I hereby certify that this document was filed in the County Recorders office at _____ M. on the _____ day of _____ A.D., 20____.

County Recorder _____
 By _____, Deputy
 DOCUMENT NO. _____

STATEMENT OF EVIDENCE: Witness Corner for Meander Corner No. 48
on west line of Section 30, Township 145 North, Range 28 West

The following offices were contacted for information regarding
this corner:

Minnesota Secretary of States Office
DNR Bureau of Engineering
Minnesota Department of Transportation
Cass County Survey Department
Cass County Recorders Office
DNR Forestry Office in Cass Lake, MN

June 1873, The corner was originally established by the U.S.
General Land Office by P.H. Conger. A post was set at the
corner and ties were made.

October 1999, R. Main of the Forest Service searched for the
Meander Corner and noted that he believes the Meander Corner
is approximately 40 feet in the lake.

November 2003, Landecker & Associates, Inc. found an iron
monument at the witness corner. No history of this iron
monument was previously on record.

February 2005, Widseth Smith Nolting & Associates found this
same iron monument and used this to establish the west line
of Section 30.

A000529620

OFFICE OF COUNTY RECORDER
CASS COUNTY MINNESOTA

CERTIFIED, FILED, AND/OR
RECORDED ON
08/09/2007 02:36:28PM

AS DOC #: A000529620
PAGES: 3
REC FEES: \$0.00

KATHRYN M. NORBY
COUNTY RECORDER

BY Kathryn M Norby DEPUTY
mj