

# CERTIFICATE OF LOCATION OF GOVERNMENT CORNER

I hereby certify that this survey, plan, or report was prepared by me or under my direct supervision and that I am a duly Licensed Land Surveyor under the laws of the State of Minnesota.

*Todd R. Johnson*  
 \_\_\_\_\_  
 TODD R. JOHNSON

Date: 6-26-07 License No: 44869  
 PLS #21367

OFFICE OF THE COUNTY RECORDER  
 County of CASS

I hereby certify that this document was filed in the Office of the County Recorder at \_\_\_\_\_ o'clock \_\_\_\_\_ M. on the \_\_\_\_\_ day of \_\_\_\_\_, 20\_\_\_\_ A.D.

County Recorder \_\_\_\_\_  
 By: \_\_\_\_\_, Deputy  
 DOCUMENT NO. \_\_\_\_\_

NORTHEAST Corner of Section 32, Township 139, Range 29, 5TH P.M.

On 12/20/06 found a FOUND 1" IRON PIPE DOWN 2"

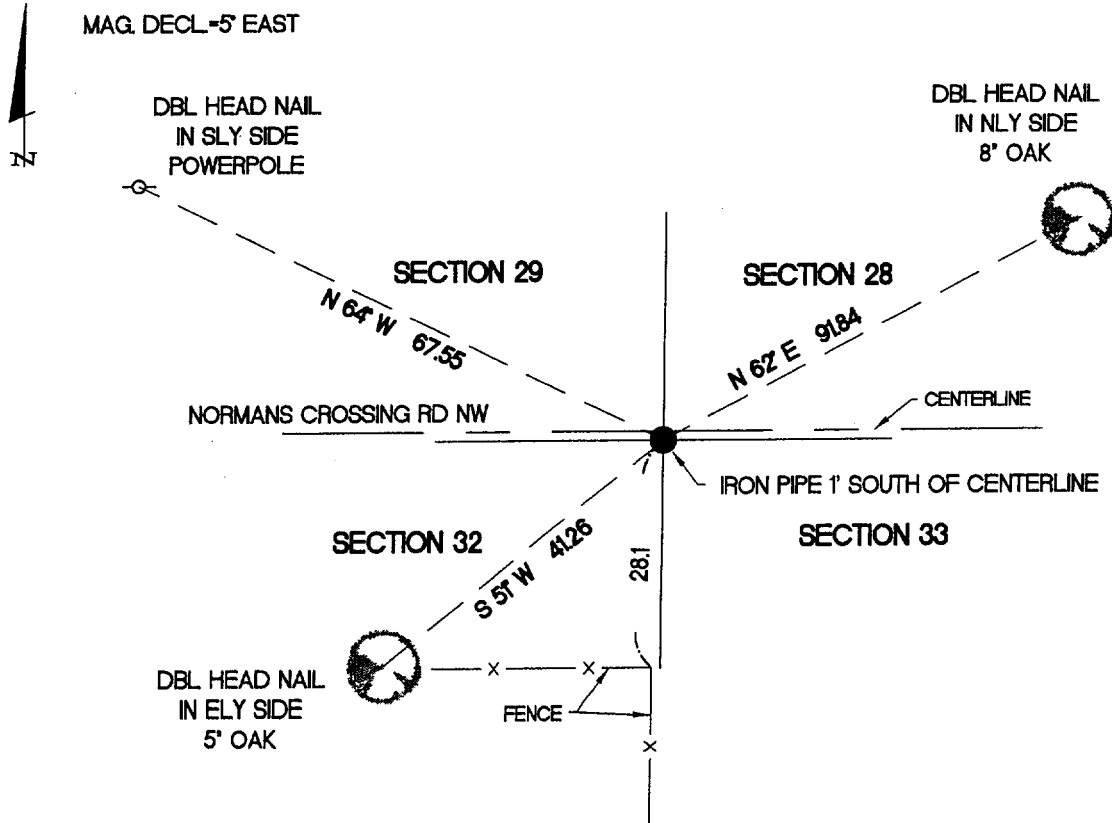
left monument as found,  lowered monument,  removed monument (explain)

On \_\_\_\_\_ placed a \_\_\_\_\_

## SKETCH OF REFERENCE TIES

Corner Index: V-9

Not to Scale



NOTE: ALL ACCESSORIES HAVE BT TAGS

Statement of evidence for this corner position is on the back of this page

STATEMENT OF EVIDENCE

Index No. V - 9

Northeast Corner, Section 32, Township 139 North,  
Range 29 West, Cass County, Minnesota

- 1865 Wright & Walker, U.S. Deputy Surveyors, originally established this corner position while surveying the interior subdivision lines of Township 139 North, Range 29 West. A wood post was set to mark the corner position with the following witnesses: A 15 inch Norway Pine, South 9 degrees East, 142 links; A 15 inch Norway Pine, North 53 degrees West, 92 links; A 6 inch Black Pine, South 16 ½ degrees West, 144 links; A 6 inch Black Pine, North 65 degrees East, 155 links.
- 1911 County Survey Record Book A, Page 379, shows the field notes of a survey of part of Township 139 North, Range 29 West by John W. Curo, County Surveyor and Harry Todd, Deputy County Surveyor. The old Northeast and Southeast bearing trees are recovered and a 2 inch x 48 inch capped galvanized iron pipe was set with new bearing trees as follows: A 10 inch Jack Pine, North 72 degrees 50 minutes West, 21.50 feet; A 10 inch Jack Pine, South 31 degrees, 50 minutes West, 30.02 feet.
- 1912 County Survey Record Book B, Page 198, shows corner recovered by John W. Curo.
- 1916 County Survey Record Book B, Page 609, shows 1 ½ inch capped galvanized iron pipe recovered B. A. Nowak, surveyor. He was surveying a road under the direction of John W. Curo, County Surveyor.
- 1922 Plat of NAPANEE BEACH by John M. Green, shows a distance from the Meander Corner on the north line of Section 32 near the shore of Lake Hattie to the northeast corner of Section 32.
- 1942 County Survey Record Book D, Page 301, shows ties to corner by John W. Curo, County Surveyor. They are A 12 inch Jack Pine, North 75 degrees 55 minutes East, 92.05 feet; A 7 inch Jack Pine, South 50 degrees 45 minutes East, 114.50 feet; A 7 inch Red Oak, South 39 degrees 20 minutes West, 34.70 feet; An 8 inch Red Oak, North 59 degrees 12 minutes West, 36.05 feet.
- 1968 August, R.F. Schneider, RLS#5740, found a broken off 2 ½ iron pipe 1 foot below surface. He set a 1 inch galvanized iron pipe over stub. He notes that the position falls on the centerline of an east-west road and an old fence north. The following witnesses are established: A 10 inch Jack Pine, South 5 degrees West, 31.20 feet; A 10 inch Jack Pine, South 68 degrees West, 73.39 feet.
- 1980 April, Certificate of Survey by Myron Landecker, RLS#7452, shows monument found.
- 2002 June, Certificate of Survey by David Landecker, RLS#17008, shows monument found.
- 2003 June, Certificate of Survey by Myron Landecker, RLS#7452, shows monument found.
- 2006 December 20<sup>th</sup>, a Landecker & Associates, Inc. survey crew finds a 1 inch iron pipe with damaged top 2 inches below road surface. They also found the remains of an Oak Stump South 39 degrees West, ±34.7 feet. No markings visible. The corner is accepted as found and the following witnesses are established: An 8 inch Oak, North 62 degrees East, 91.84 feet; A 5 inch Oak, South 51 degrees West, 41.26 feet; A Power Pole, North 64 degrees West, 67.55 feet.

A000529618

OFFICE OF COUNTY RECORDER  
CASS COUNTY MINNESOTA

CERTIFIED, FILED, AND/OR  
RECORDED ON  
08/09/2007 02:36:26PM

AS DOC #: A000529618  
PAGES: 3  
REC FEES: \$0.00

KATHRYN M. NORBY  
COUNTY RECORDER

BY Kathryn M Norby DEPUTY  
ms