

CERTIFICATE OF LOCATION OF GOVERNMENT CORNER

I hereby certify that this survey, plan, or report was prepared by me or under my direct supervision and that I am a duly Licensed Land Surveyor under the laws of the State of Minnesota.

Todd K. Johnson

 TODD K. JOHNSON

Date: 6-15-07 License No: 44869
 RLS #44869

OFFICE OF THE COUNTY RECORDER
 County of CASS

I hereby certify that this document was filed in the Office of the County Recorder at _____ o'clock _____ .M. on the _____ day of _____, 20____ A.D.

County Recorder _____

By: _____, Deputy
 DOCUMENT NO. _____

NORTHEAST Corner of Section 33, Township 139, Range 30, 5TH P.M.

On 4/09/03 found a NAIL

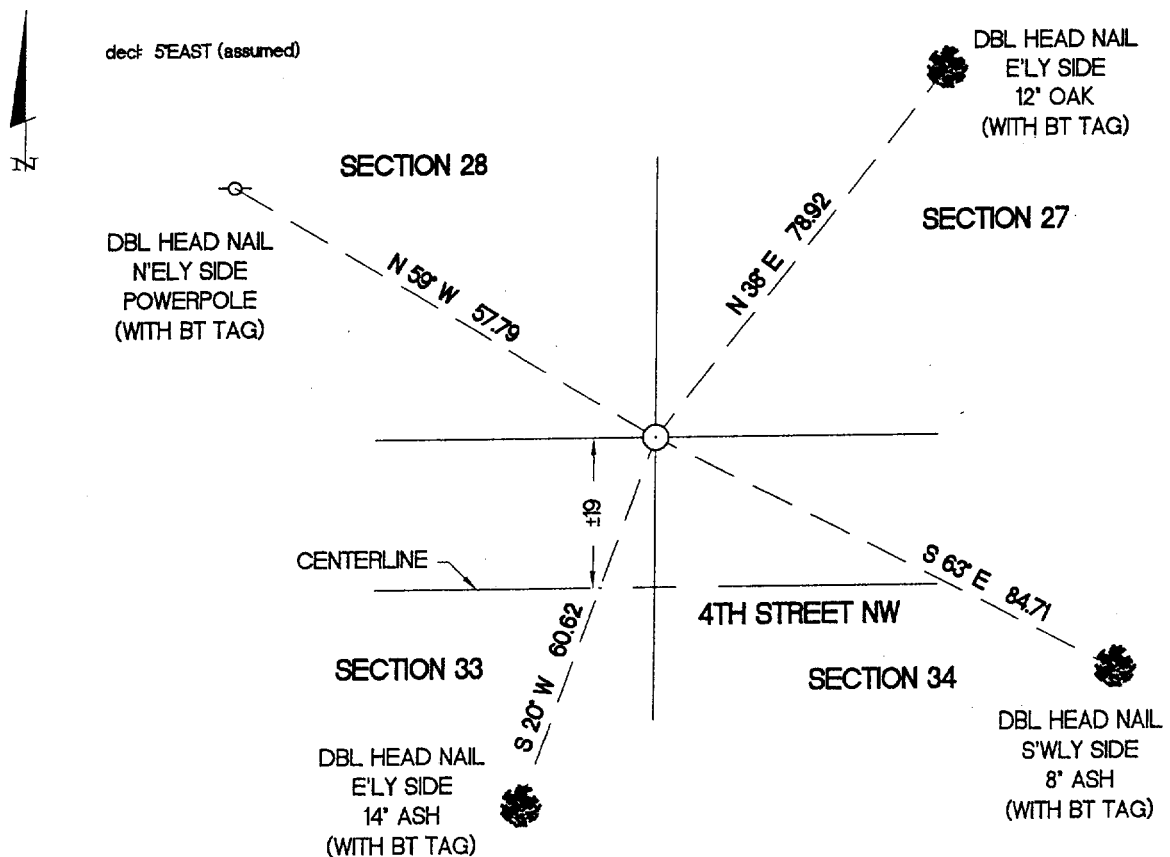
left monument as found, lowered monument, removed monument (explain)

On 12/21/06 placed a 3/4" IRON PIPE WITH PLASTIC CAP RLS #44869

SKETCH OF REFERENCE TIES

Corner Index: V-13

Not to Scale



ALL DISTANCES ARE MEASURED HORIZONTAL.

Statement of evidence for this corner position is on the back of this page

STATEMENT OF EVIDENCE

Index No. V - 13

Northeast Corner, Section 33, Township 139 North,
Range 30 West, Cass County, Minnesota

- 1865 G.B. Wright and T.B. Walker, U.S. Deputy Surveyors, originally established this corner position while surveying the interior subdivision lines of Township 139 North, Range 30 West. A wood post was set to mark the corner position with the following witnesses: A 7 inch Linden, North 79 degrees East, 24 links; A 9 inch Birch, North 29 degrees West, 31 links; A 5 inch Linden, South 46 degrees West, 9 links; A 5 inch Elm, South 32 1/2 degrees East, 12 links.
- 1959 Plat of HARDWOOD POINT by W. J. Spain, Jr., RLS#2003, shows monument.
- 1967 February, Robert F. Schneider, RLS#5740, finds a 2 inch iron pipe 19 feet north of the existing road centerline. He accepts it as the corner position and establishes the following accessories: An 8 inch Ash, North 71 degrees East, 30.64 feet; A 6 inch Balsam, South 57 degrees East, 110.25 feet; A 6 inch Balsam, South 41 degrees West, 68.00 feet.
- 1980 Gary H. Stevenson, RLS#12684, recovers a 2 inch iron pipe at the corner position.
- 2003 April, a Landecker & Associates Inc. survey crew finds a nail. After recovering monuments set by Schneider and Stevenson in previous surveys, the nail is accepted as the corner position.
- 2004 September, Certificate of Survey by Roger Mustonen, RLS#11946, shows an iron pipe monument found.
- 2005 April, Certificate of Survey by Terry Freeman, RLS#21367, shows monument found.
- 2006 July, a Landecker & Associates, Inc. survey crew recovers the nail accepted in previous work as the corner position and finds an 8 inch Balsam stump, South 41 degrees West, 68.00 feet per Robert Schneider 1967 survey. The nail also agrees with the position accepted by Mustonen. A 3/4 inch iron pipe with plastic cap marked by registration number 44869 is set over the nail and the following accessories are established: A 12 inch Oak, North 38 degrees East, 78.92 feet; An 8 inch Ash, South 63 degrees East, 84.71 feet; A 14 inch Ash, South 20 degrees West, 60.62 feet; A Power Pole, North 59 degrees West, 57.79 feet.

A000527804
OFFICE OF COUNTY RECORDER
CASS COUNTY MINNESOTA
CERTIFIED, FILED, AND/OR
RECORDED ON
06/20/2007 11:16:38AM

AS DOC #: A000527804
 PAGES: 2
 REC FEES: \$0.00

KATHRYN M. NORBY
COUNTY RECORDER

BY Kathryn M. Norby **DEPUTY**