

# CERTIFICATE OF LOCATION OF GOVERNMENT CORNER

I hereby certify that this survey, plan, or report was prepared by me or under my direct supervision and that I am a duly Licensed Land Surveyor under the laws of the State of Minnesota.

*Todd R. Johnson*  
 \_\_\_\_\_  
 TODD R. JOHNSON

Date: 1/11/07 License No: 44869  
44869

OFFICE OF THE COUNTY RECORDER  
 County of CASS

I hereby certify that this document was filed in the Office of the County Recorder at \_\_\_\_\_ o'clock \_\_\_\_\_ M. on the \_\_\_\_\_ day of \_\_\_\_\_, 20\_\_\_\_ A.D.

County Recorder \_\_\_\_\_

By: \_\_\_\_\_, Deputy  
DOCUMENT NO.

EAST QUARTER Corner of Section 21, Township 139, Range 26, 5TH P.M.

On 8/2/06 found a FOUND 1 1/4" IRON PIPE UP 14 INCHES

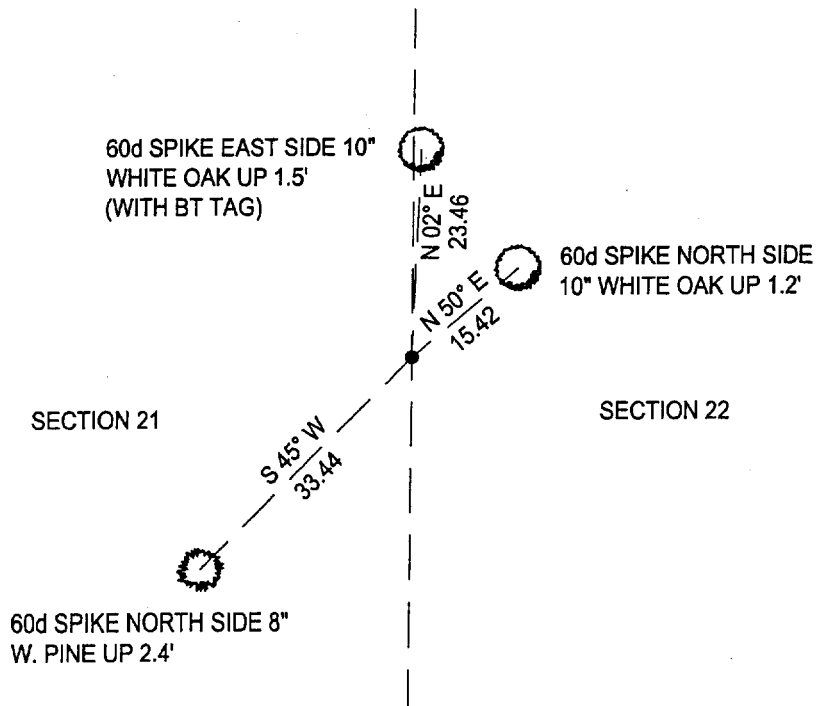
left monument as found,  lowered monument,  removed monument (explain)

On \_\_\_\_\_ placed a \_\_\_\_\_

## SKETCH OF REFERENCE TIES

Corner Index: P-13

Not to Scale



Statement of evidence for this corner position is on the back of this page

STATEMENT OF EVIDENCE

Index No. P - 13

East Quarter Corner, Section 21, Township  
139 North, Range 26 West, Cass County,  
Minnesota

- 1863 Johnson and Thornton, U.S. Deputy Surveyors originally established this corner position while surveying the interior subdivision lines of Township 139 North, Range 26 West. A wood post was set to mark the corner with the following witnesses: An 8 inch Yellow Pine, North 7 degrees East, 266 links; A 10 inch Yellow Pine, North 87 degrees West, 271 links.
- 2006 August 8<sup>th</sup>, a Landecker and Associates, Inc. survey crew found a 1 ¼ inch iron pipe and accepts the corner as established by others. The following accessories are established: A 10 inch White Oak, North 2 degrees East, 23.46 feet; A 10 inch White Oak, North 50 degrees East, 15.42 feet; An 8 inch White Pine, South 45 degrees West, 33.44 feet.

A000525258

OFFICE OF COUNTY RECORDER  
CASS COUNTY MINNESOTA

CERTIFIED, FILED, AND/OR  
RECORDED ON  
04/12/2007 08:41:31AM

AS DOC #: A000525258  
PAGES: 2  
REC FEES: \$0.00

KATHRYN M. NORBY  
COUNTY RECORDER

BY Kathryn M Norby DEPUTY  
m)