

CERTIFICATE OF LOCATION OF GOVERNMENT CORNER

I hereby certify that this survey, plan, or report was prepared by me or under my direct supervision and that I am a duly Licensed Land Surveyor under the laws of the State of Minnesota.



 TERRY L. FREEMAN

Date: 2/9/07 License No: 21367
 PLS #21367

OFFICE OF THE COUNTY RECORDER
 County of CASS

I hereby certify that this document was filed in the Office of the County Recorder at _____ o'clock _____ M. on the _____ day of _____, 20____ A.D.

County Recorder _____

By: _____, Deputy
 DOCUMENT NO. _____

EAST QUARTER Corner of Section 24, Township 140, Range 29, 5TH P.M.

On APRIL 13, 2005 found a 2" IRON PIPE 14" DOWN IN ROADWAY

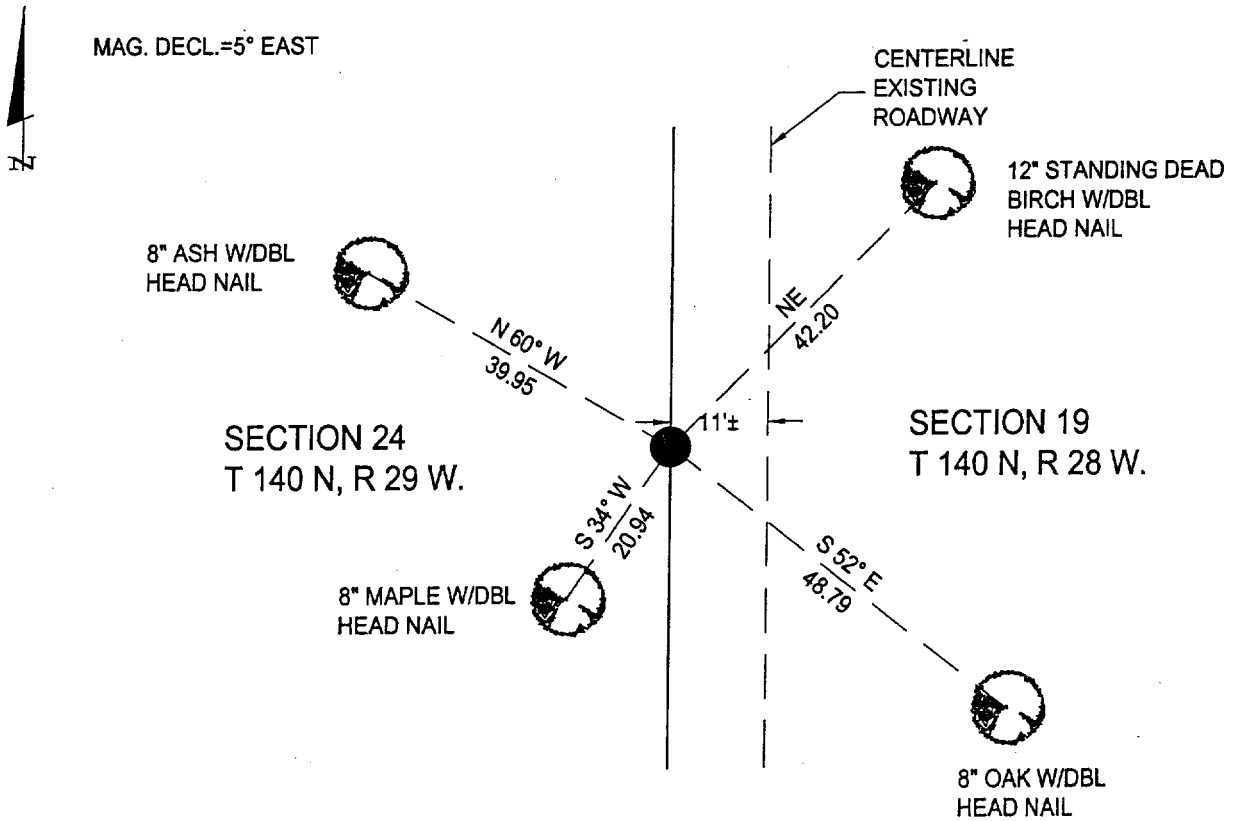
left monument as found, lowered monument, removed monument (explain)

On _____ placed a _____

SKETCH OF REFERENCE TIES

Corner Index: P 25

Not to Scale



Statement of evidence for this corner position is on the back of this page

STATEMENT OF EVIDENCE

Index No. P- 25

East Quarter Corner, Section 24, Township 140
North, Range 29 West, Cass County, Minnesota

- 1863 Johnson and Thornton, U.S. Deputy Surveyors, originally established this corner position while surveying the exterior lines of Township 140 North, Range 28 West. A wood post was set to mark the corner position with the following witnesses: A 6 inch Aspen, North 10 degrees East, 13 links; An 8 inch Aspen, South 73 degrees West, 7 links.
- 1916 County Survey Record Book "B", pages 121-127, shows a survey by E. B. Horst, Deputy County Surveyor, where he set a wood post proportionally with the following witnesses: A 6 inch Poplar, South 39 degrees West, 63.20 feet; a White Pine Stub, South 65 degrees East 37.70 feet.
- 1917 County Survey Record Book "C", page 80, shows a 2 inch by 48 inch iron monument set by E. B. Horst, Deputy County Surveyor.
- 1936 April, Microfilm Book 233, page 13, shows a survey by John Curo, County Surveyor, where he recovers the 2 inch by 48 inch iron monument set by E. B. Horst, Deputy County Surveyor.
- 1973 R.F. Schneider, RLS#5740, recovered a 2 inch iron pipe during survey of UTSLERS WOOD HAVEN.
- 1981 G.H. Stevenson, RLS#12684, found 2 inch iron pipe on West side of road and makes the following accessories: A 12 inch Birch, Northeast, 42.20 feet; An 8 inch Maple, South west, 20.94 feet; A 4 inch Maple, North Northwest, 20.33 feet.
- 2005 April, Landecker and Associates, Inc. survey crew finds a 2 inch iron pipe and accepts it as the perpetuation of the original corner position from with the following accessories: An 8 inch Oak, South 52 degrees East, 48.79 feet; found A 8 inch Maple, South 34 degrees West, 20.94 feet; An 8 inch Ash, North 60 degrees West, 39.95 feet; found a standing dead 12 inch Birch, Northeast 42.20 feet.

A000525254

OFFICE OF COUNTY RECORDER
CASS COUNTY MINNESOTA

CERTIFIED, FILED, AND/OR
RECORDED ON
04/12/2007 08:41:27AM

AS DOC #: A000525254
PAGES: 2 3 mW
REC FEES: \$0.00

KATHRYN M. NORBY
COUNTY RECORDER

BY Kathryn M Norby DEPUTY
mW