

CERTIFICATE OF LOCATION OF GOVERNMENT CORNER

I hereby certify that this survey, plan, or report was prepared by me or under my direct supervision and that I am a duly Licensed Land Surveyor under the laws of the State of Minnesota



TERRY L. FREEMAN

Date: 2/9/07 License No: 21367

OFFICE OF THE COUNTY RECORDER
County of CASS

I hereby certify that this document was filed in the Office of the County Recorder at _____ o'clock _____ M. on the _____ day of _____, 20____ A.D.

County Recorder _____
By: _____, Deputy
DOCUMENT NO. _____

NORTHEAST Corner of Section 25, Township 143, Range 31, 5TH P.M.

On 5/22/06 found a 2" IRON PIPE WITH BRASS CAP UP 3"

left monument as found, lowered monument, removed monument (explain)

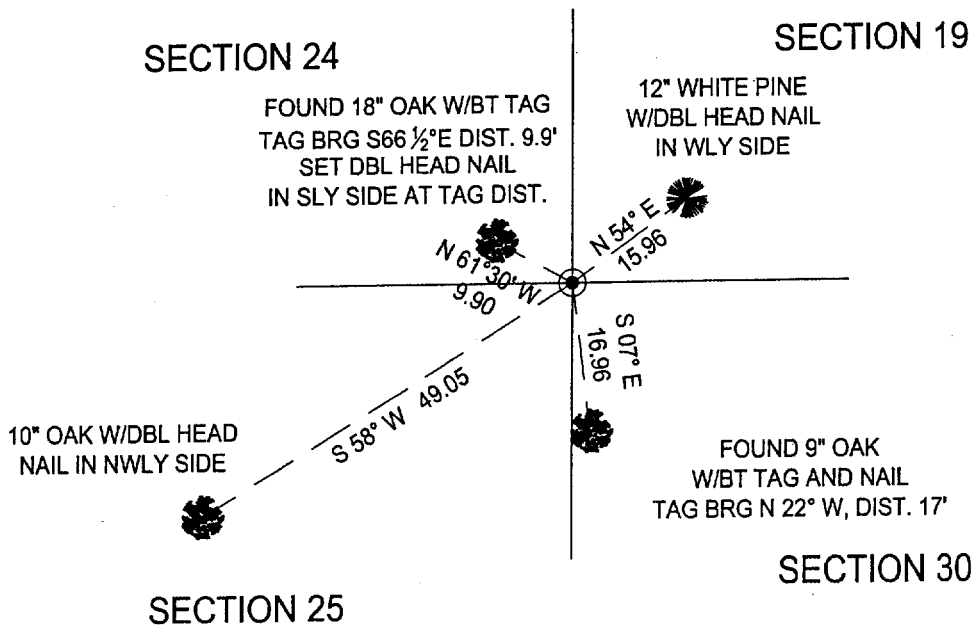
On _____ placed a _____

SKETCH OF REFERENCE TIES

Corner Index: R 25

Not to Scale

MAG. DECL.=5° EAST



Statement of evidence for this corner position is on the back of this page

STATEMENT OF EVIDENCE

Index No. R - 25

Northeast Corner, Section 25, Township 143 North,
Range 31 West, Cass County, Minnesota

- 1875 Benjamin C. Baldwin, U.S. Deputy Surveyor, originally established this corner position while surveying the east line of Township 143 North, Range 31 West. A wood post was set to mark the corner position with the following witnesses: An 8 inch Burr Oak, North 37 degrees East, 563 links; An 8 inch Burr Oak, South 44 degrees West, 244 links; An 8 inch Red Oak, North 41 degrees West, 360 links; A 12 inch Red Oak, North 65 degrees West, 218 links.
- 1919 Albinus N. Kimmell, U.S. Cadastral Engineer, re-established this corner position during a dependent resurvey. He set a 2 inch x 36 inch iron pipe with brass cap with the following witnesses: A 6 inch Birch, North 74 3/4 degrees East, 30 links; An 8 inch Poplar, South 57 1/4 degrees East, 18 links; A 6 inch Poplar, South 56 1/2 degrees West, 21 links; An 8 inch White Oak, North 61 1/2 degrees West, 15 links.
- 1956 Plat of CHIPPEWA BEACH by Harold Curo, RLS#3417, shows monument.
- 2004 July, a Landecker & Associates, Inc. survey crew recovered the brass cap monument while surveying the plat of CHIPPEWA BEACH.
- 2006 May, a Landecker & Associates, Inc. survey crew recovers the brass cap monument and accepts the corner as re-established in 1919 from which the following accessories: A 12 inch White Pine, North 54 degrees East, 15.96 feet; A 9 inch Oak, South 7 degrees East, 16.96 feet; A 10 inch Oak, South 58 degrees West, 49.05 feet; An 18 inch Oak, North 61 degrees 30 minutes West, 9.90 feet.

A000525250
OFFICE OF COUNTY RECORDER
CASS COUNTY MINNESOTA

CERTIFIED, FILED, AND/OR
RECORDED ON
04/12/2007 08:41:23AM

AS DOC #: A000525250
PAGES: 2 mw
REC FEES: \$0.00

KATHRYN M. NORBY
COUNTY RECORDER

BY Kathryn M Norby DEPUTY
mw