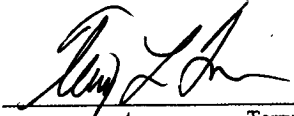


CERTIFICATE OF LOCATION OF GOVERNMENT CORNER

I hereby certify that this survey, plan, or report was prepared by me or under my direct supervision and that I am a duly Licensed Land Surveyor under the laws of the State of Minnesota.



Terry L. Freeman

Date: 1/5/07 License No: 21367
RLS #21367

OFFICE OF THE COUNTY RECORDER

County of Cass

I hereby certify that this document was filed in the Office of the County Recorder at _____ o'clock _____ .M. on the _____ day of _____, 20____ A.D.

County Recorder _____

By: _____, Deputy
DOCUMENT NO.

East Quarter Corner of Section 4, Township 145, Range 31, 5th P.M.

On _____ found a _____

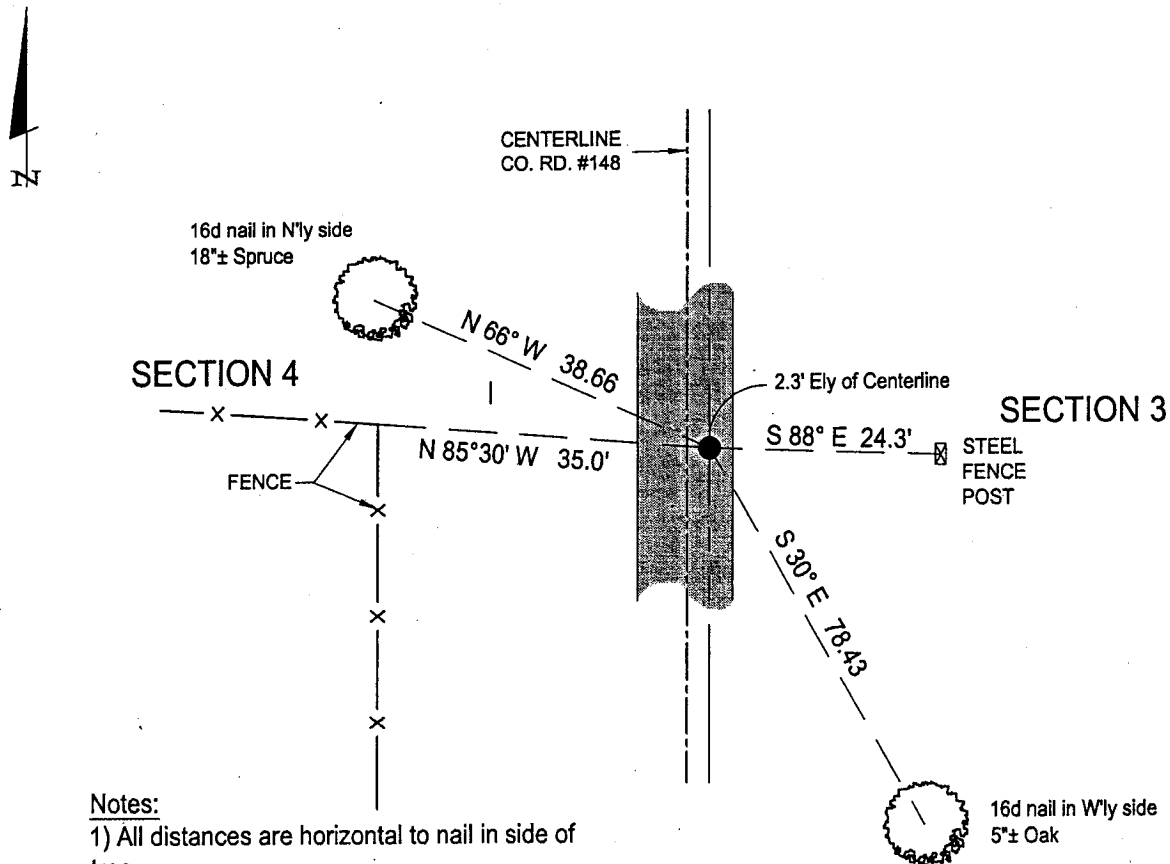
left monument as found, lowered monument, removed monument (explain)

On 12/18/06 placed a MAG NAIL

SKETCH OF REFERENCE TIES

Corner Index: **C 13**

Not to Scale



Notes:

- 1) All distances are horizontal to nail in side of tree.
- 2) Declination assumed at 5° East.

Statement of evidence for this corner position is on the back of this page

STATEMENT OF EVIDENCE

Index No. C - 13

East Quarter Corner, Section 4, Township 145
North, Range 31 West, Fifth Principal Meridian

- 1875 B.C. Baldwin, U.S. Deputy Surveyor, originally established this corner position while surveying the interior subdivision lines of Township 145 North, Range 31 West. A wood post was set to mark the corner position with the following witnesses: An 8 inch Jack Pine, North 89 degrees East, 40 links; An 8 inch Jack Pine, North 73 degrees West, 99 links.
While running the line North between Section 3 and 4, he terminates the line at Drewery Lake and does not close on the north township line.
Copies of the above record are on file at the Cass County Survey Office.
- 1900-1904 U.S. Army Corps of Engineers survey map of the Lake Winnibigoshish Reservoir on file with the U.S. Forest Service in Cass Lake indicates that no corner was recovered.
- 1922 E.B. Horst, LS#376, on Microfilm Roll 12, Curo Book 186, Page 5 shows a traverse along the west and north lines of Section 3. Survey indicates a position established for this corner.
- 2006 December 18th, A Landecker and Associates, Inc. survey crew, having searched for corner and finding nothing, set a mag nail at the obliterated position as established by E. B. Horst survey of 1922 from which the following accessories: A 5 inch Oak, South 30 degrees East, 78.43 feet; An 18 inch Spruce, North 66 degrees West, 38.66 feet.

A000522174
OFFICE OF COUNTY RECORDER
CASS COUNTY MINNESOTA
CERTIFIED, FILED, AND/OR
RECORDED ON
01/08/2007 03:53:10PM
AS DOC #: A000522174
PAGES: 2
REC FEES: \$0.00

KATHRYN M. NORBY
COUNTY RECORDER
BY Kathryn M. Norby
NY DEPUTY