

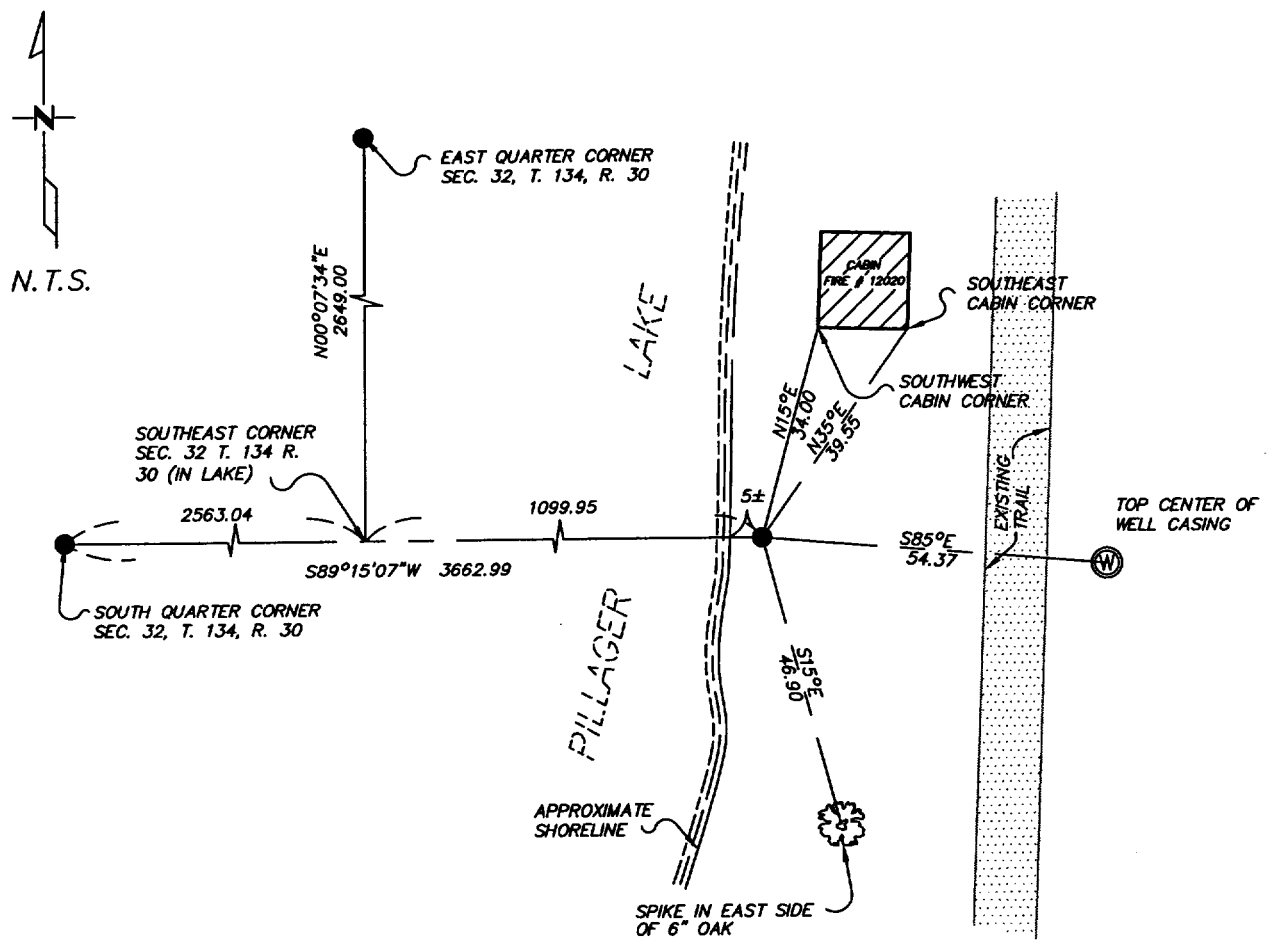
CERTIFICATE OF LOCATION OF GOVERNMENT CORNER

Meander Corner #18 _____ of Section 33, Township 134, Range 30
5TH Principal Meridian, State of Minnesota, County of Cass

At the corner location shown on the sketch:

- On 8/2006 found a 1' PIPE
DATE
- left monument as found lowered monument removed monument (explain)
- On _____ placed a _____
DATE

SKETCH OF REFERENCE TIES



Statement of evidence relative to this corner location is on back of page.

I hereby certify that this document and the data contained herein was prepared by me or under my direct supervision.

Ch. Hoyle 10/10/06
SIGNATURE DATE

Registration No. 43932

Land Surveyor Professional Engineer
 County Surveyor County Engineer

OFFICE OF THE COUNTY RECORDER
 County of _____

I hereby certify that this document was filed in the Co. Recorders office at _____ M. on the _____ day of _____ A.D., 20____

County Recorder _____
 By _____, Deputy
 DOCUMENT NO. _____

Statement of Evidence

Meander Corner #18, Section 33 , T. 134N. R. 30W., 5th P.M.

1858 – Wood post set for corner

1928 – Meander corner was set from original bearing trees by John W. Curo

(unknown) – Plat of survey by Walter Curo shows meander corner in place.

1985 – Certificate of Survey by Comstock and Davis, Inc. shows meander corner found in place and coinciding with Walter Curo position.

Oct. 10, 2006 – Westwood Professional Services, Inc. finds meander corner in place, ties to which are shown on the face of this certificate.

A000519290

OFFICE OF COUNTY RECORDER
CASS COUNTY MINNESOTA

CERTIFIED, FILED, AND/OR
RECORDED ON
10/19/2006 02:33:27PM

AS DOC #: A000519290
PAGES: 2
REC FEES: \$0.00

KATHRYN M. NORBY
COUNTY RECORDER

BY Kathryn M Norby
m Deputy