

A000518646

OFFICE OF COUNTY RECORDER  
CASS COUNTY MINNESOTA

CERTIFIED, FILED, AND/OR  
RECORDED ON  
10/05/2006 08:44:44AM

AS DOC #: A000518646  
PAGES: 2  
REC FEES: \$0.00

KATHRYN M. NORBY  
COUNTY RECORDER

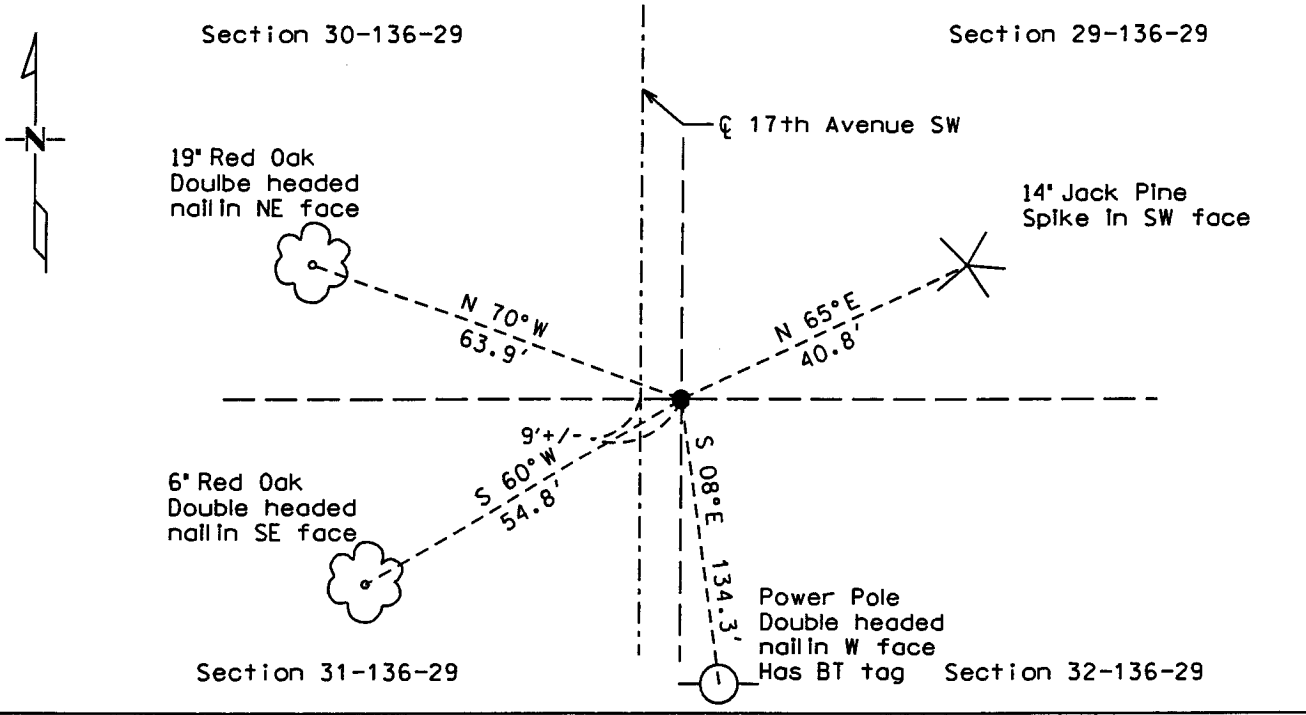
BY Kathryn M Norby  
*mw* DEPUTY

# CERTIFICATE OF LOCATION OF GOVERNMENT CORNER

Northeast Corner of Section 31, Township 136, Range 29  
West Principal Meridian, State of Minnesota, County of Cass

At the corner location shown on the sketch:

- On 9/20/06 found a 3/8" pin down 0.6'  
DATE
- left monument as found     lowered monument     removed monument (explain)
- On \_\_\_\_\_ placed a \_\_\_\_\_  
DATE



Statement of evidence for this corner location is on back of this page.

I hereby certify that this document was researched and prepared by me or under my direct supervision.

Signature Jacott M Len Date 9/28/06 License No. 42619  
 Title:  Land Surveyor     Professional Engineer     County Surveyor     County Engineer

**Statement of Evidence:** Northeast Corner of Section 31, Township 136, Range 29 West, 5<sup>th</sup> Principle Meridian, Cass County Minnesota.

In 1870, Walker, Allen, and Putnam originally established this corner position while subdividing Township 136 North, Range 29 West. A wood post was set to mark the corner with the following witnesses: A 8" B. Pine, South 50 degrees East, 62 links; a 8" B. Pine, South 57 degrees West, 80 links; a 7" B. Pine, North 75 degrees West, 86 links; a 8" Black Pine, North 59 degrees East, 93 links.

In 1909, Mr. John Curo recovered the original bearing trees and set a stake to mark the corner as indicated in the County Survey Record Book A, Survey Record 229, p. 571-576. Measurements to the existing bearing trees were as follows: A 8" B. Pine, South 50 degrees East, 44.58 feet; a 8" B. Pine, South 57 degrees West, 52.80 feet; a 7" B. Pine, North 75 degrees West, 56,76 feet; a 8" B. Pine, North 59 degrees East, 65.48 feet.

In 1916, Mr. E.B Horst recovered the corner and set a 2x48 inch iron to mark the corner, as indicated in County Survey Record Book B, Pg. 335-338.

In the May 1925 Township Road Order, Mr. John Curo indicates the corner recovered.

In 2001, the Cass County Survey Office recovered a 60d spike at the corner. The spike was 0.6 feet below the asphalt, 8 feet East of the centerline of 17<sup>th</sup> Ave. SW and 2 feet South of a fenceline running West and South. The following witnesses were established: a 14" R. Oak, North 61 degrees West, 63.96 feet; a 7" W. Pine, North 25 degrees East, 70.91 feet; a power pole with tag, South 8 degrees East, 134.29 feet; a 5" W. Oak, South 68 degrees West, 55.09 feet.

In 2003, Landecker and Associates recovered the corner and bearing ties.

In October of 2003, Mr. P. Trottier, RLS # 41002, indicates monument found by Certificate of Survey as evidenced by Cass County Surveyor records.

In March of 2004, Mr. P. Trottier, RLS # 41002, indicates monument found by Certificate of Survey as evidenced by Cass County Surveyor records.

In February of 2005, Mr. Jarrett Leas, RLS # 2619, indicates monument found by Certificate of Survey as evidenced by Cass County Surveyor records.

In September of 2006, Kramer Leas DeLeo recovered a 3/8" rebar monument and made bearing tree ties to two red oaks and a jack pine. An existing tie was recovered in a power pole. Kramer Leas DeLeo accepts this as the correct location for the corner.

For details and survey analysis contact Kramer Leas DeLeo in Brainerd, Minnesota.