

A000518644

OFFICE OF COUNTY RECORDER
CASS COUNTY MINNESOTA

CERTIFIED, FILED, AND/OR
RECORDED ON
10/05/2006 08:44:42AM

AS DOC #: A000518644
PAGES: 2
REC FEES: \$0.00

KATHRYN M. NORBY
COUNTY RECORDER

BY Kathryn M Norby DEPUTY *mw*

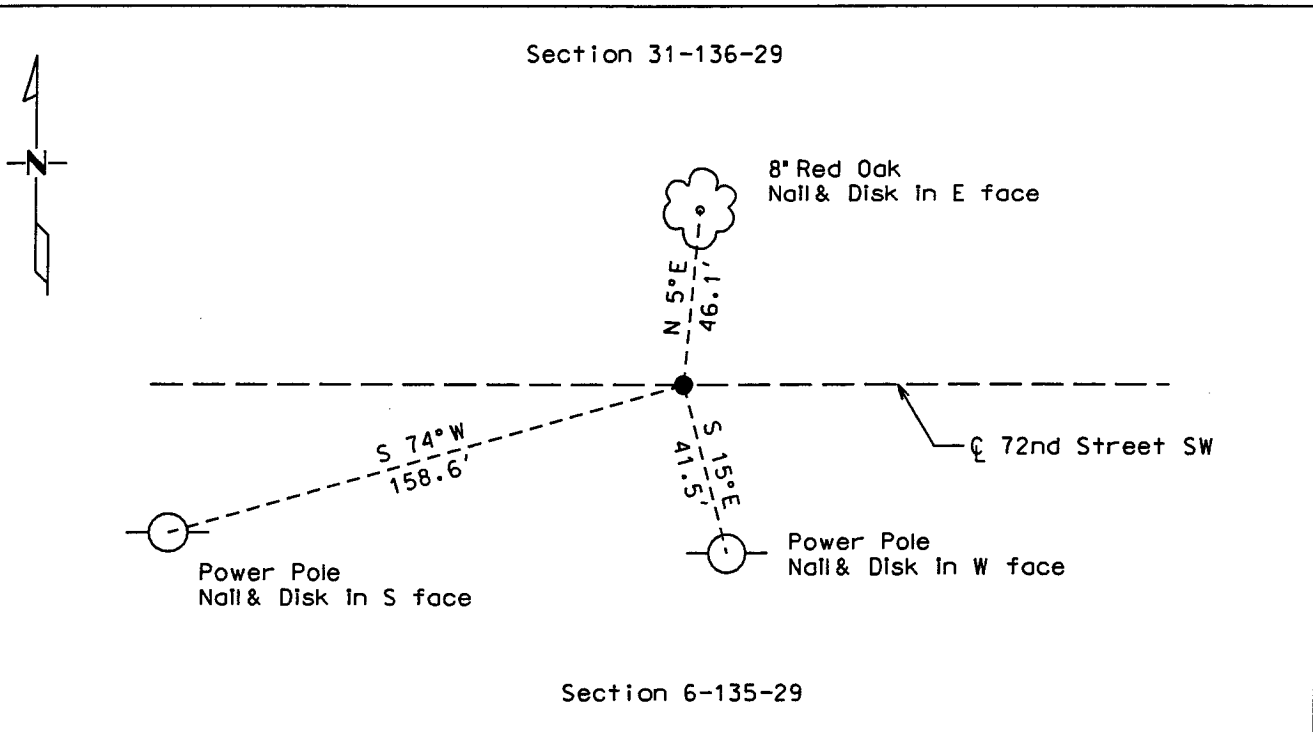
CERTIFICATE OF LOCATION OF GOVERNMENT CORNER

North Quarter Corner of Section 6, Township 135, Range 29

West Principal Meridian, State of Minnesota, County of Cass

At the corner location shown on the sketch:

- On 9/20/06 found a 1/2" iron pipe monument down 0.3'
DATE
- left monument as found lowered monument removed monument (explain)
- On _____ placed a _____
DATE



Statement of evidence for this corner location is on back of this page.

I hereby certify that this document was researched and prepared by me or under my direct supervision.

Signature *Jeanette M. Lee* Date 9/28/06 License No. 42619
 Title: Land Surveyor Professional Engineer County Surveyor County Engineer

Statement of Evidence: North Quarter Corner of Section 06, Township 135, Range 29 West, 5th Principle Meridian, Cass County Minnesota.

The Original Government Survey was run in 1858 and a post was set to mark the corner. Bearing ties were made to two Aspen trees.

In 1903, Mr. W.H. Hallett indicates monument found in a Township Road Order as evidenced by Cass County Surveyor records.

In February of 2003, Mr. P. Trottier indicates monument found by Certificate of Survey as evidenced by Cass County Surveyor records.

In March of 2003, Mr. D. Landecker indicates monument found on a sketch as evidenced by Cass County Surveyor records.

In September of 2006, Kramer Leas DeLeo recovered a ½" iron pipe monument and made bearing tree ties to a red oak and two power poles. Kramer Leas DeLeo accepts this as the correct location for the corner.

For details and survey analysis contact Kramer Leas DeLeo in Brainerd, Minnesota.