

A000518627

OFFICE OF COUNTY RECORDER
CASS COUNTY MINNESOTA

CERTIFIED, FILED, AND/OR
RECORDED ON
10/05/2006 08:23:04AM

AS DOC #: A000518627
PAGES: 2
REC FEES: \$0.00

KATHRYN M. NORBY
COUNTY RECORDER

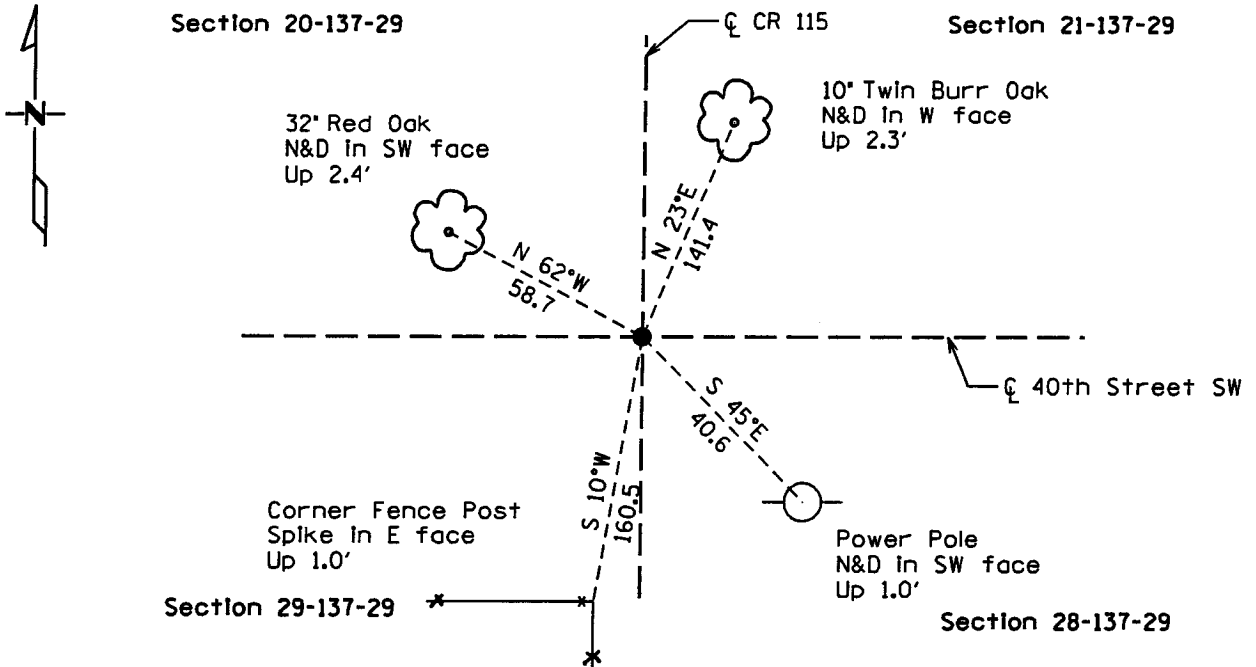
BY Kathryn M. Norby DEPUTY

CERTIFICATE OF LOCATION OF GOVERNMENT CORNER

Northeast Corner of Section 29, Township 137, Range 29
West Principal Meridian, State of Minnesota, County of Cass

At the corner location shown on the sketch:

- On 6/28/06 found a 1" Iron pipe down 0.5'
DATE
- left monument as found lowered monument removed monument (explain)
- On _____ placed a _____
DATE



Statement of evidence for this corner location is on back of this page.

I hereby certify that this document was researched and prepared by me or under my direct supervision.

Signature Jessica M. Lee Date 10/02/06 License No. 42619
 Title: Land Surveyor Professional Engineer County Surveyor County Engineer

Statement of Evidence: Northeast corner of Section 29, Township 137, Range 29 West, 5th Principle Meridian, Cass County Minnesota.

The Original Government Survey was run in 1865 and a post was set to mark the corner. Bearing ties were set to a Black Pine and two Norway Pine trees.

In 1910, Mr. John Curo, recovered the corner and set an 8x8x36 inch cement post.

As indicated on Cass County Corner Card, a road survey of undocumented origin and undocumented date set a 2x48 inch iron monument. Note County Book "C", pg 477.

In 1915, Mr. John Curo recovered the concrete monument. Bearing ties were set to two Jack Pine trees.

On May 16, 1922, Mr. C.J. Bark, Assistant Highway Engineer, recovered the corner as evidenced by a school flag pole NE 75.3 feet, and a Jack Pine tree NW 55.5 feet. Bark set a 6 inch square concrete monument. Bearing ties were set to four hollow iron pipes as follows:

- A 2" hollow iron pipe NE 55 feet
- A 2" hollow iron pipe NW 55 feet
- A 2" hollow iron pipe SW 46.7 feet
- A 2" hollow iron pipe SE 46.7 feet

In June of 2006, Kramer Leas DeLeo recovered a 1" iron pipe monument and made bearing tree ties to a red oak, a burr oak, a power pole, and a corner fence post. Kramer Leas DeLeo accepts this as the correct location for the corner.

For details and survey analysis contact Kramer Leas DeLeo in Brainerd, Minnesota.