

A000518625

OFFICE OF COUNTY RECORDER
CASS COUNTY MINNESOTA

CERTIFIED, FILED, AND/OR
RECORDED ON
10/05/2006 08:23:02AM

AS DOC #: A000518625
PAGES: 2
REC FEES: \$0.00

KATHRYN M. NORBY
COUNTY RECORDER

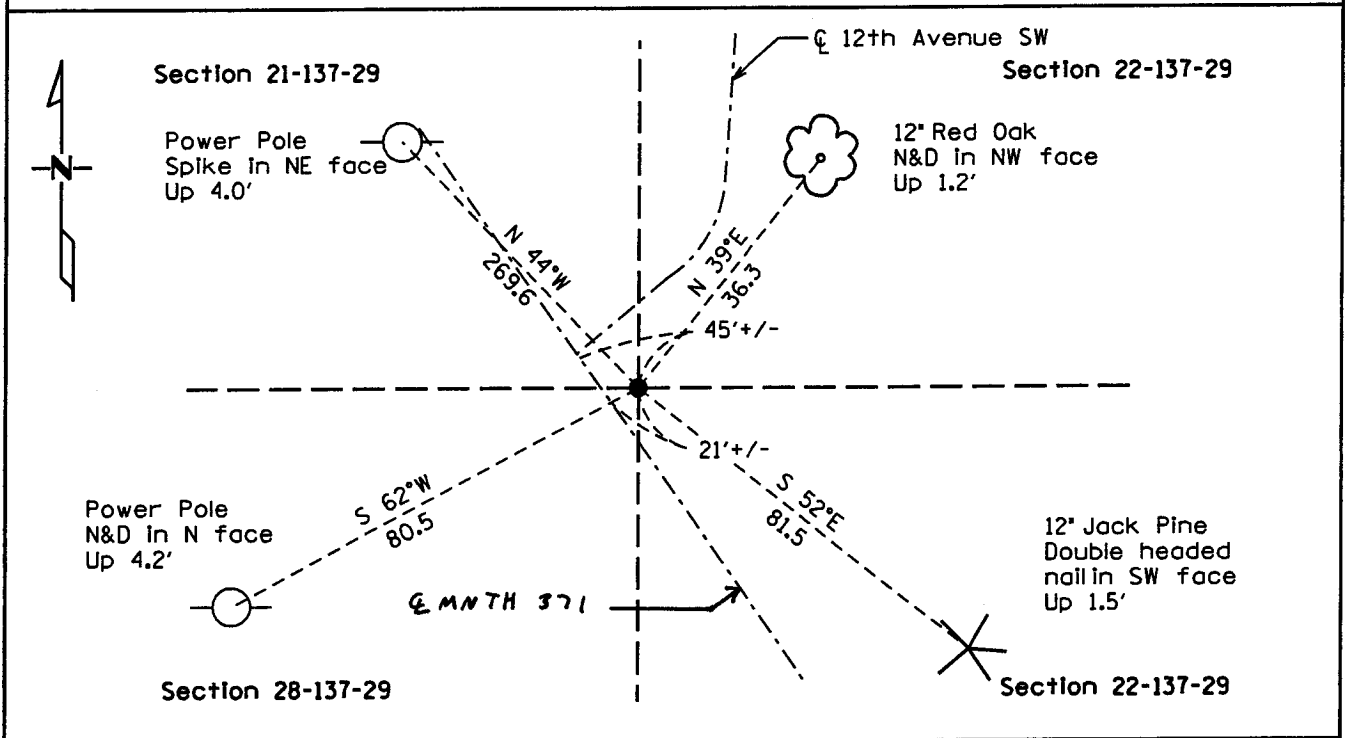
BY Kathryn M. Norby
DEPUTY

CERTIFICATE OF LOCATION OF GOVERNMENT CORNER

Northeast Corner of Section 28, Township 137, Range 29
West Principal Meridian, State of Minnesota, County of Cass

At the corner location shown on the sketch:

- On 6/28/06 found a Bridge Spike
DATE
- left monument as found lowered monument removed monument (explain)
- On _____ placed a _____
DATE



Statement of evidence for this corner location is on back of this page.

I hereby certify that this document was researched and prepared by me or under my direct supervision.

Signature Jessie M. Lee Date 10/02/06 License No. 42619
 Title: Land Surveyor Professional Engineer County Surveyor County Engineer

Statement of Evidence: North Quarter corner of Section 28, Township 137, Range 29 West, 5th Principle Meridian, Cass County Minnesota.

The Original Government Survey was run in 1865 and a witness corner post was set to mark the corner. Bearing ties were set to an Aspen tree.

In June of 2006, Kramer Leas DeLeo recovered a bridge spike and made bearing trees ties to a red oak, a jack pine and two power poles. Kramer Leas DeLeo accepts this as the correct location for the corner.

For details and survey analysis contact Kramer Leas DeLeo in Brainerd, Minnesota.