

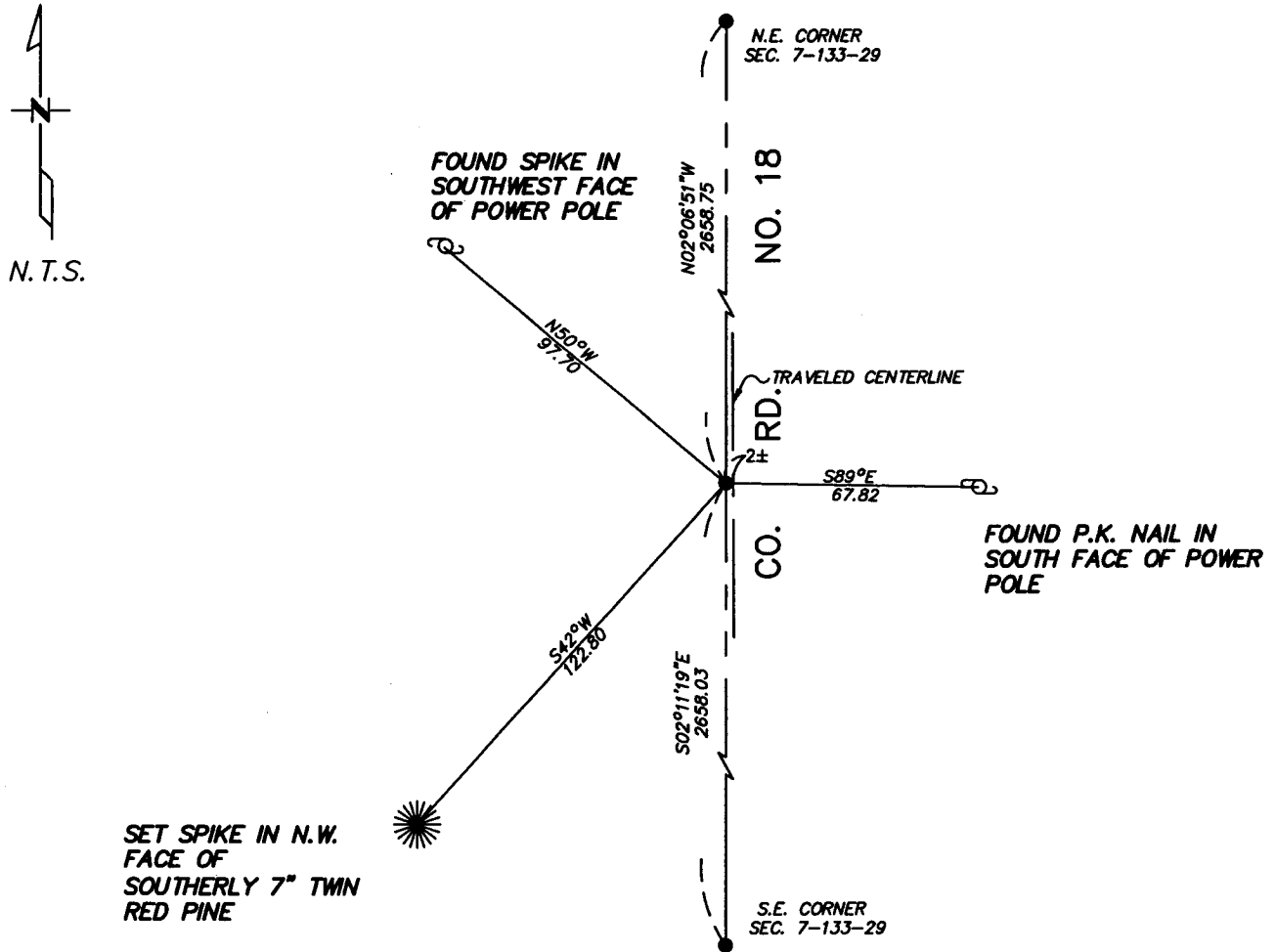
CERTIFICATE OF LOCATION OF GOVERNMENT CORNER

East Quarter _____ Corner of Section 7, Township 133, Range 29
5TH Principal Meridian, State of Minnesota, County of Cass

At the corner location shown on the sketch:

- On 9/11/06 found a P.K. NAIL
DATE
- left monument as found lowered monument removed monument (explain)
- On _____ placed a _____
DATE

SKETCH OF REFERENCE TIES



Statement of evidence relative to this corner location is on back of page.

I hereby certify that this document and the data contained herein was prepared by me or under my direct supervision.

Ch. Hoop 9/13/06
SIGNATURE DATE

Registration No. 43932

- Land Surveyor Professional Engineer
 County Surveyor County Engineer

OFFICE OF THE COUNTY RECORDER
 County of _____

I hereby certify that this document was filed in the Co. Recorders office at _____ M. on the _____ day of _____ A.D., 20____

County Recorder _____
 By _____, Deputy
 DOCUMENT NO. _____

Statement of Evidence

East Quarter Corner, Section 7, T. 133N. R. 29W., 5th P.M.

1858 – Wood post was set for corner.

1912 – John Curo sets 4"x36" Iron Pipe in concrete for corner, current County Surveyor Record Book "A", P. 434-443.

1918 – E.B. Horst finds Corner, County Book "C", P. 127

1971 – County Highway Department finds 2" pipe in place, 1.4' west of centerline

1999 – C.C.S.O finds pipe capped R.L.S. 21367 in place, located 2' west of centerline of County Road No. 18 and 8' north of and 53' south of approaches east of County Road No. 18.

Oct. 2000 – Jim Nielson License Number 11865 Certificate of Survey shows monument found.

July 2001 – Bruce Grivna License Number 17253 Certificate of Survey shows monument found.

March 2003 – Bruce Grivna License Number 17253 Certificate of Survey shows monument found.

September 2006 – Westwood Professional Services, Inc. finds iron monument in place and pulls ties as shown on the face of front certificate.

A000517941
OFFICE OF COUNTY RECORDER
CASS COUNTY MINNESOTA
CERTIFIED, FILED, AND/OR
RECORDED ON
09/19/2006 01:17:13PM
AS DOC #: A000517941
PAGES: 2
REC FEES: \$0.00

KATHRYN M. NORBY
COUNTY RECORDER
BY Kathryn M. Norby
#11 DEPUTY