

CERTIFICATE OF LOCATION OF GOVERNMENT CORNER

NORTHEAST Corner of Section 31, Township 134, Range 30

5TH Principal Meridian, State of Minnesota, County of Cass

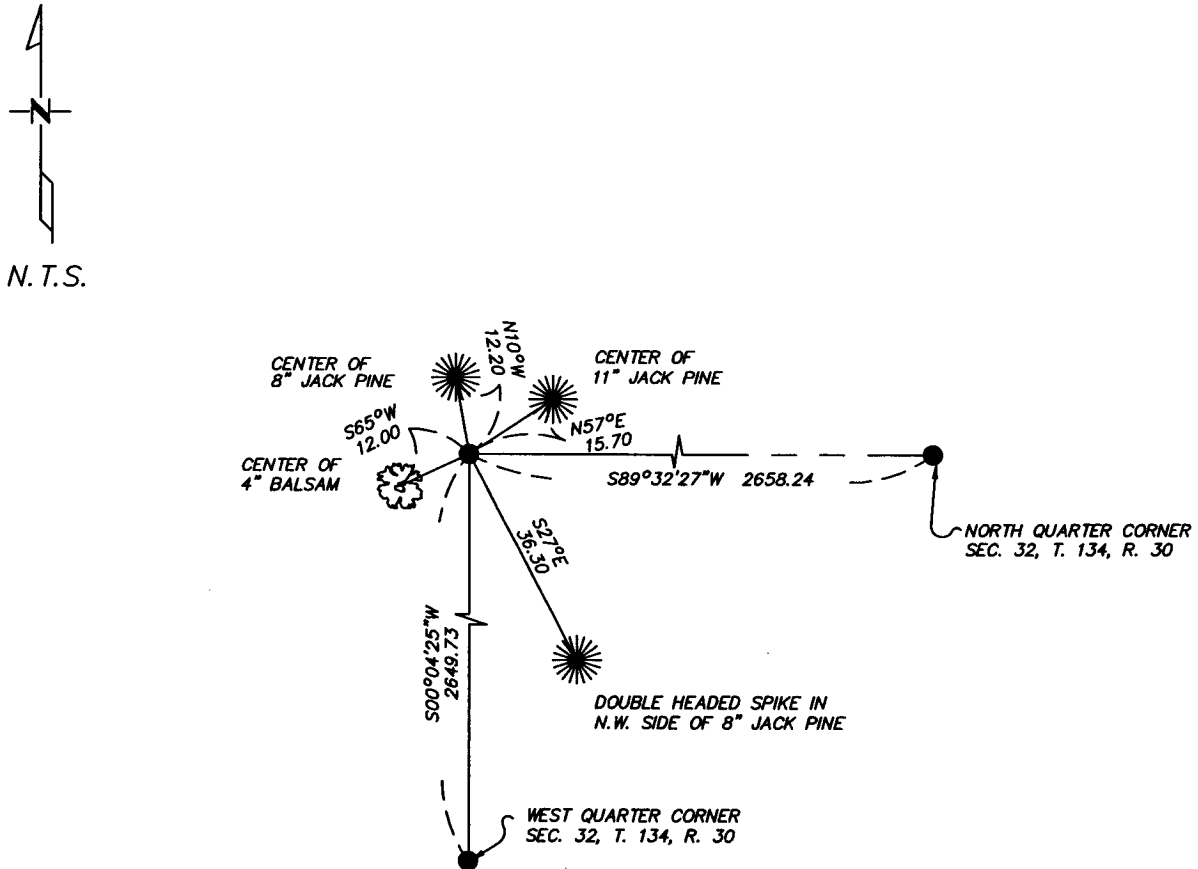
At the corner location shown on the sketch:

On 8/2006 found a FOUND 1/2' PIPE CAPPED R.L.S. # 17008
DATE

left monument as found lowered monument removed monument (explain)

On _____ placed a _____
DATE

SKETCH OF REFERENCE TIES



N.T.S.

Statement of evidence relative to this corner location is on back of page.

I hereby certify that this document and the data contained herein was prepared by me or under my direct supervision.

Ch. Hoebel 8/22/06
SIGNATURE DATE

Registration No. 43932

Land Surveyor Professional Engineer

County Surveyor County Engineer

OFFICE OF THE COUNTY RECORDER
 County of _____

I hereby certify that this document was filed in the Co. Recorders office at ____ M. on the ____ day of _____ A.D., 20__

County Recorder _____

By _____, Deputy

DOCUMENT NO. _____

Statement of Evidence

East 1/4, Section 32, T. 134N. R. 30W., 5th P.M.

1868 - WOOD POST SET AT CORNER

JUNE 13, 1921 - J.M. GREENE, CURO BOOK 173, PAGE 14, GREENE USES TESTIMONY FROM RESIDENT STEVE ROGERS TO FIND FENCE CORNER WITHIN 5 FEET OF MISSING CORNER. GREENE SETS STAKE FROM TREE STUMPS.

DEC. 2002 - KEVIN METZ, LICENSE NUMBER 40343 FILES REPORT ON MISSING CORNER.

FEB. 2003 - DAVID LANDECKER LICENSE NUMBER 17008 CERTIFICATE OF SURVEY SHOWS MONUMENT SET.

2006 - WESTWOOD PROFESSIONAL SERVICES, INC. FINDS 1/2" PIPE CAPPED R.L.S. 17008 IN PLACE, THE TIES TO WHICH ARE ON THE FRONT OF THIS CERTIFICATE.

A000517027

OFFICE OF COUNTY RECORDER
CASS COUNTY MINNESOTA

CERTIFIED, FILED, AND/OR
RECORDED ON
08/25/2006 09:26:59AM

AS DOC #: A000517027
PAGES: 2
REC FEES: \$0.00

KATHRYN M. NORBY
COUNTY RECORDER

BY Kathryn M. Norby
#11 DEPUTY