

A000516670

OFFICE OF COUNTY RECORDER
CASS COUNTY MINNESOTA

CERTIFIED, FILED, AND/OR
RECORDED ON
08/16/2006 12:39:08PM

AS DOC #: A000516670
PAGES: 2
REC FEES: \$0.00

KATHRYN M. NORBY
COUNTY RECORDER

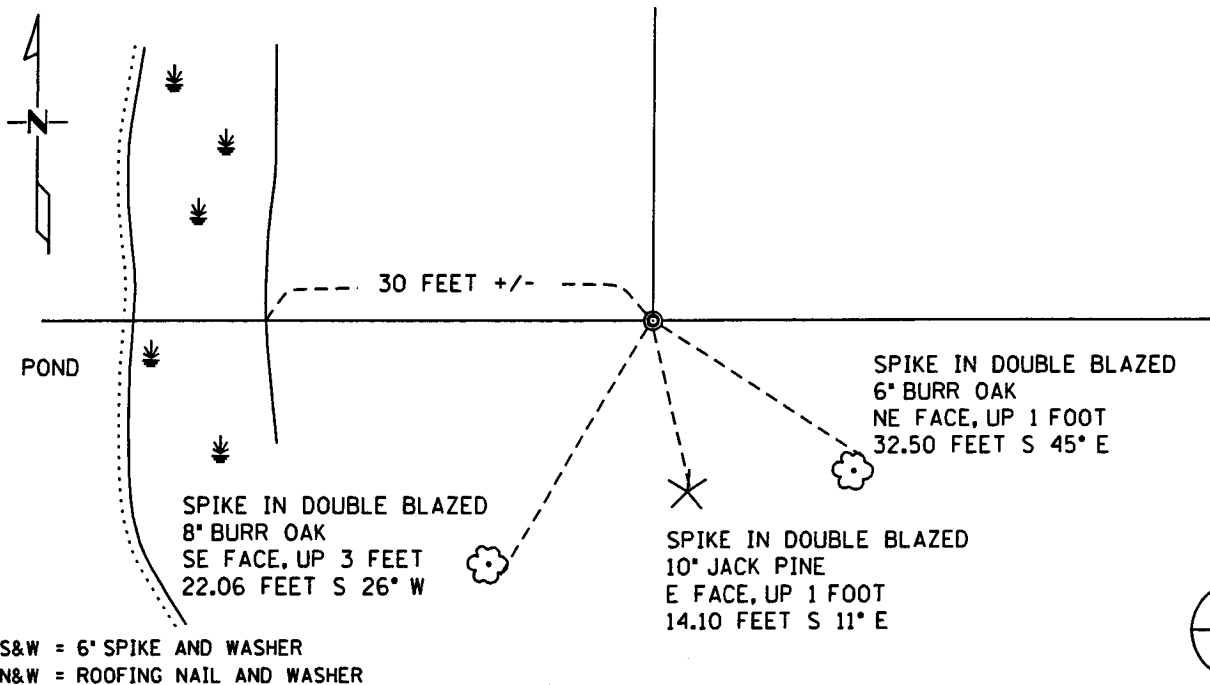
BY Kathryn M. Norby #12 DEPUTY

CERTIFICATE OF LOCATION OF GOVERNMENT CORNER

North Quarter Corner of Section 7, Township 138 N, Range 30 W
5TH Principal Meridian, State of Minnesota, County of Cass

At the corner location shown on the sketch:

- On 3-20-2005 found a 2 inch capped pipe up 0.5 feet.
DATE
- left monument as found lowered monument removed monument (explain)
- On _____ placed a _____
DATE



Statement of evidence for this corner location is on back of this page.

I hereby certify that this document was researched and prepared by me or under my direct supervision.

Signature [Handwritten Signature] Date 3/14/06 License No. 42619
 Title: Land Surveyor Professional Engineer County Surveyor County Engineer

Statement of Evidence: North Quarter Corner of Section 7, Township 138, Range 30 West, 5th Principle Meridian, Cass County Minnesota.

The Original Government Survey was run in 1865 and a post was set to mark the corner. Bearing ties were made to two Black Pine trees.

In 1920, Mr. Ben Clark recovered the post and bearing ties. A 3 x 30 inch iron monument with cap was set. Bearing ties were made to a Jack Pine and a Norway Pine tree.

In 1921, Mr. E.B. Horst recovered an iron monument in place, as well as the bearing ties.

In 2006 Kramer Leas DeLeo recovered a 2" capped pipe and bearing tree ties were made to two oak trees and a pine tree. Kramer Leas DeLeo accepts this as the correct location for the corner.

For details and survey analysis contact Kramer Leas DeLeo in Brainerd, Minnesota.