

A000516662

OFFICE OF COUNTY RECORDER  
CASS COUNTY MINNESOTA

CERTIFIED, FILED, AND/OR  
RECORDED ON  
08/16/2006 12:39:00PM

AS DOC #: A000516662  
PAGES: 2  
REC FEES: \$0.00

KATHRYN M. NORBY  
COUNTY RECORDER

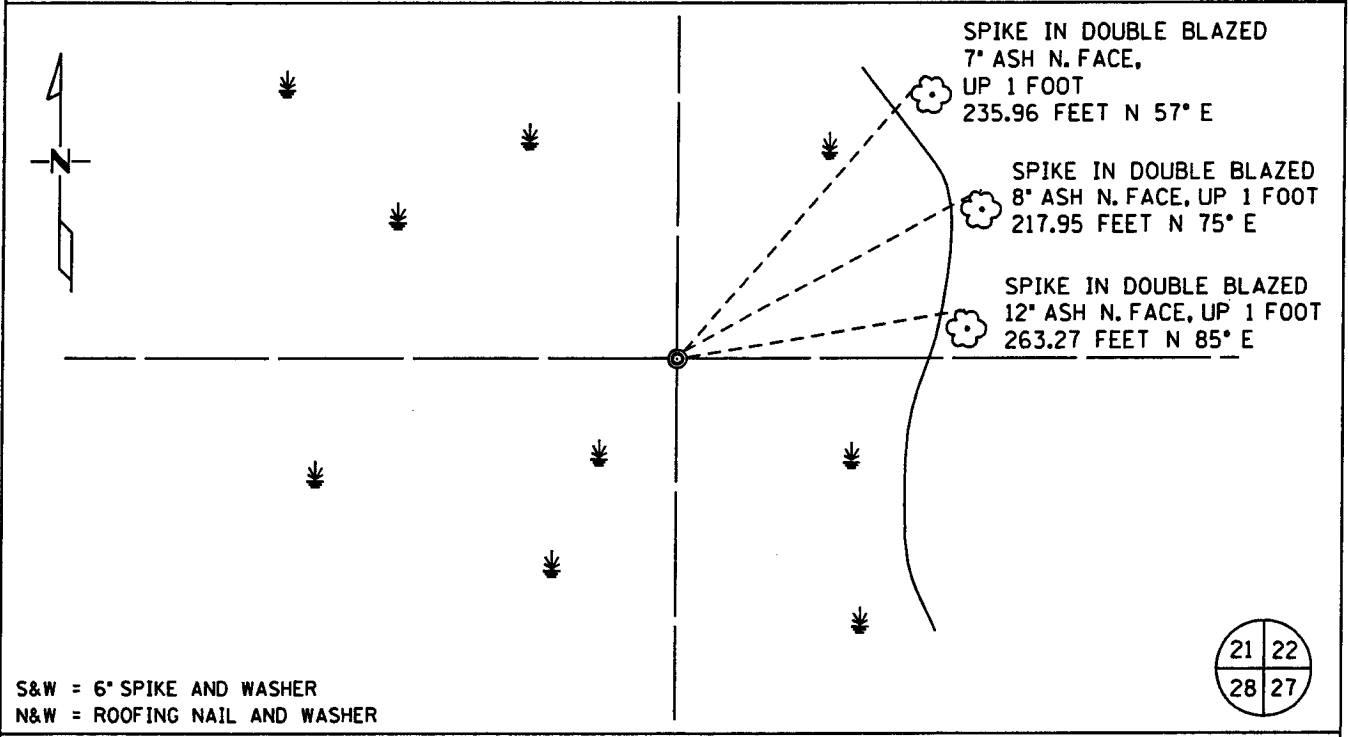
BY Kathryn Norby DEPUTY

# CERTIFICATE OF LOCATION OF GOVERNMENT CORNER

Northeast Corner of Section 28, Township 140 N, Range 29 W  
5TH Principal Meridian, State of Minnesota, County of Cass

At the corner location shown on the sketch:

- On 3-29-2005 found a 3 Inch Iron Pipe up 1.0 feet in swamp.  
DATE
- left monument as found     lowered monument     removed monument (explain)
- On \_\_\_\_\_ placed a \_\_\_\_\_  
DATE



Statement of evidence for this corner location is on back of this page.

I hereby certify that this document was researched and prepared by me or under my direct supervision.

Signature [Signature] Date 3/14/06 License No. 42619  
 Title:  Land Surveyor     Professional Engineer     County Surveyor     County Engineer

**Statement of Evidence:** Northeast corner of Section 28, Township 140, Range 29 West, 5<sup>th</sup> Principle Meridian, Cass County Minnesota.

The Original Government Survey was run in 1870 and a post was set to mark the corner. Bearing tree ties were made to four Tamaracks.

In 1966, Mr. R.F. Schneider recovered the old post and set a new Oak Post.

In 1970, Mr. R. F. Schneider replaced the Oak Post with a 3 inch pipe.

In 1988, Mr. D. Landecker indicates monument found by Certificate of Survey as evidenced by Cass County Surveyor records.

In 2004, the Cass County Surveyor's Office recovered a 3 inch pipe monument.

In 2005 Kramer Leas DeLeo recovered a 3 inch iron pipe. Bearing ties were made to three Ash trees. Kramer Leas DeLeo accepts this as the correct location for the corner.

For details and survey analysis contact Kramer Leas DeLeo in Brainerd, Minnesota.