

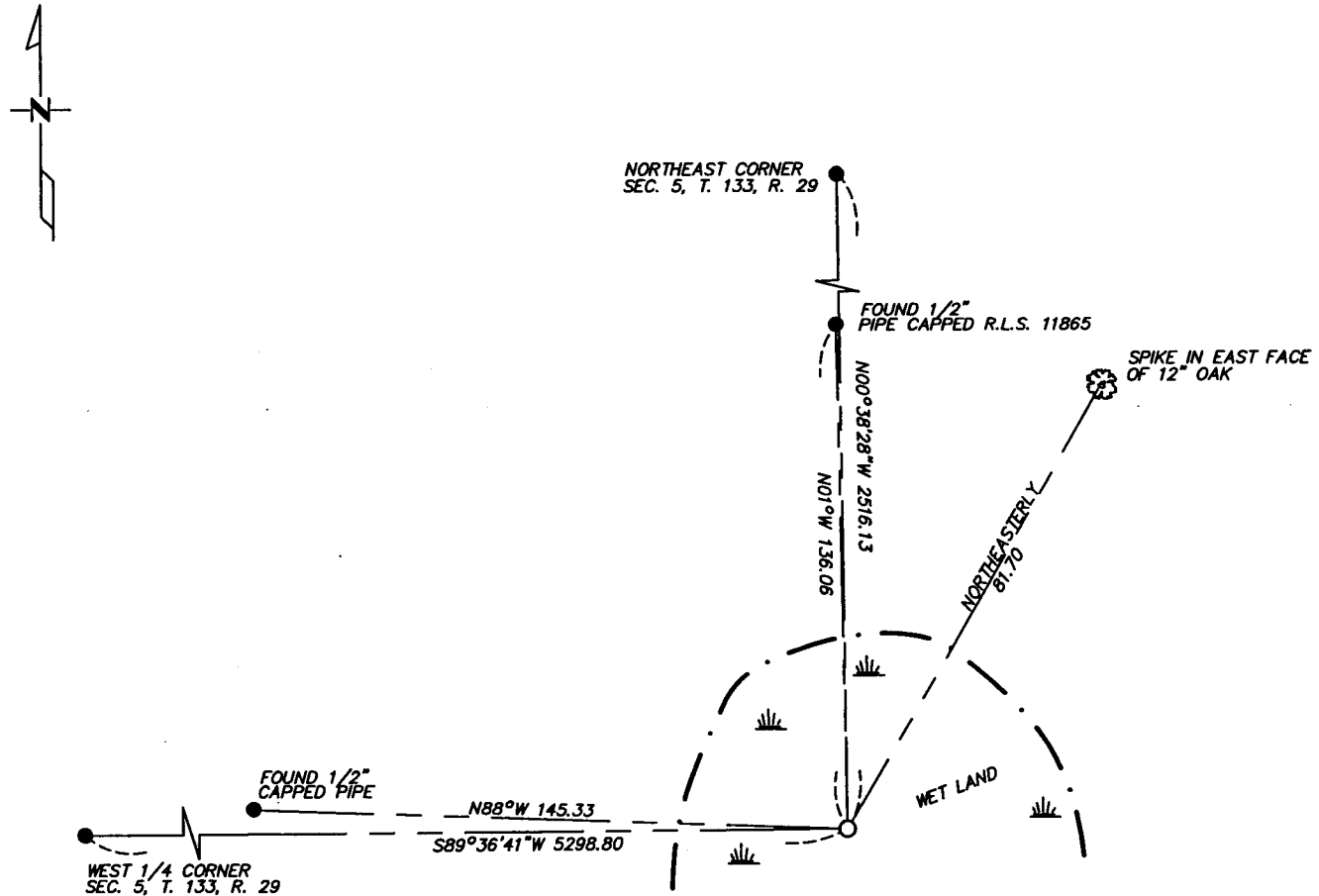
CERTIFICATE OF LOCATION OF GOVERNMENT CORNER

East Quarter _____ Corner of Section 5, Township 133, Range 29
5TH Principal Meridian, State of Minnesota, County of Cass

At the corner location shown on the sketch:

- On _____ found a _____
DATE
- left monument as found lowered monument removed monument (explain)
- On 12/20/04 placed a 2"x24" Iron Pipe
DATE

SKETCH OF REFERENCE TIES



NOT TO SCALE

Statement of evidence relative to this corner location is on back of page.

I hereby certify that this document and the data contained herein was prepared by me or under my direct supervision.

Chris Hoglund 7/2/06
SIGNATURE DATE

Registration No. 43932

- Land Surveyor Professional Engineer
- County Surveyor County Engineer

OFFICE OF THE COUNTY RECORDER
County of _____

I hereby certify that this document was filed in the Co. Recorders office at _____ M. on the _____ day of _____ A.D., 20____

County Recorder _____
By _____, Deputy

DOCUMENT NO. _____

Statement of Evidence

East Quarter, Section 5, T. 133N. R. 29W., 5th P.M.

1870 - Wood Post Set

Aug. 2002 - J. Nielson Certificate of Survey Shows Monument Found.

12/20/04 - Westwood Professional Services places a 2"x24" Pipe based on J. Nielson License No. 11865 previous position. The ties to which are shown on the front of this Certificate.

A000515687

OFFICE OF COUNTY RECORDER
CASS COUNTY MINNESOTA

CERTIFIED, FILED, AND/OR
RECORDED ON
07/24/2006 09:44:01AM

AS DOC #: A000515687
PAGES: 2
REC FEES: \$0.00

KATHRYN M. NORBY
COUNTY RECORDER

BY Kathryn M. Norby
DEPUTY