

CERTIFICATE OF LOCATION OF GOVERNMENT CORNER

North Quarter _____ Corner of Section 5 , Township 133 , Range 29
5TH Principal Meridian, State of Minnesota, County of _____ Cass _____

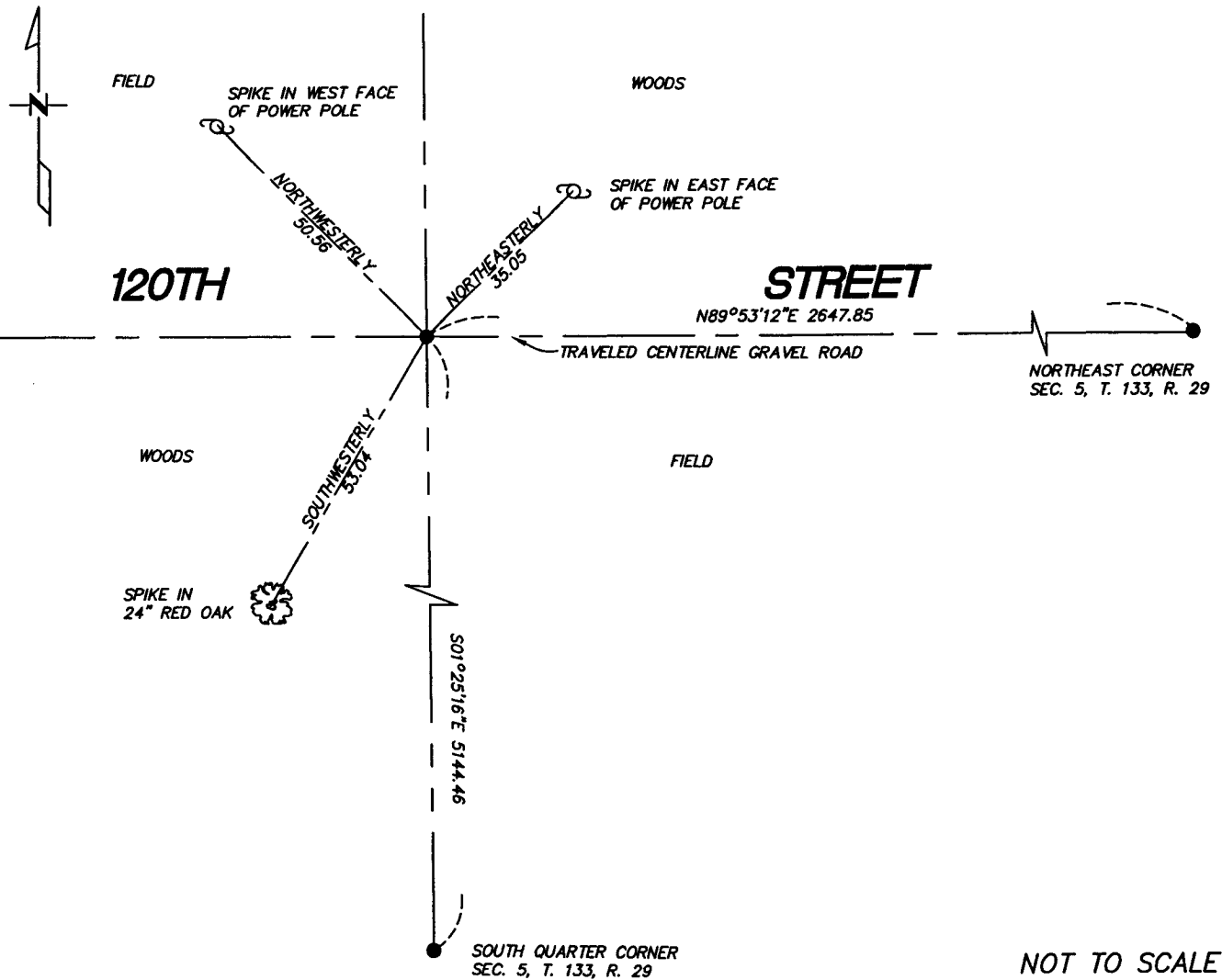
At the corner location shown on the sketch:

On 12/20/04 found a 1/2" Pipe Capped R.L.S. 17008
DATE

left monument as found lowered monument removed monument (explain)

On _____ placed a _____
DATE

SKETCH OF REFERENCE TIES



Statement of evidence relative to this corner location is on back of page.

I hereby certify that this document and the data contained herein was prepared by me or under my direct supervision.

Chris Hoglund 7/7/06
SIGNATURE DATE
Registration No. 43932

Land Surveyor Professional Engineer
 County Surveyor County Engineer

OFFICE OF THE COUNTY RECORDER
County of _____

I hereby certify that this document was filed in the Co. Recorders office at _____ M. on the _____ day of _____ A.D., 20____

County Recorder _____
By _____, Deputy

DOCUMENT NO. _____

Statement of Evidence

North Quarter, Section 5, T. 133N. R. 29W., 5th P.M.

1858 - Wood post was set for corner.

1918 - E.B. HORST set a 2"x48" I.M. County Book C, Pg. 128

1921 - John Green found I.M., Book C, Pg. 448

Dec. 2002 - Jim Kramer License No. 23668 Certificate of Survey shows Monument found.

12/20/04 - Westwood Professional Services found a 1/2" Pipe capped R.L.S. 17008 in place, the ties to which are shown on the front of this certificate.

A000515686

OFFICE OF COUNTY RECORDER
CASS COUNTY MINNESOTA

CERTIFIED, FILED, AND/OR
RECORDED ON
07/24/2006 09:44:00AM

AS DOC #: A000515686
PAGES: 2
REC FEES: \$0.00

KATHRYN M. NORBY
COUNTY RECORDER

BY Kathryn M. Norby
+w DEPUTY