

CERTIFICATE OF LOCATION OF GOVERNMENT CORNER

North Quarter _____ Corner of Section 33, Township 133, Range 29
5TH Principal Meridian, State of Minnesota, County of Cass

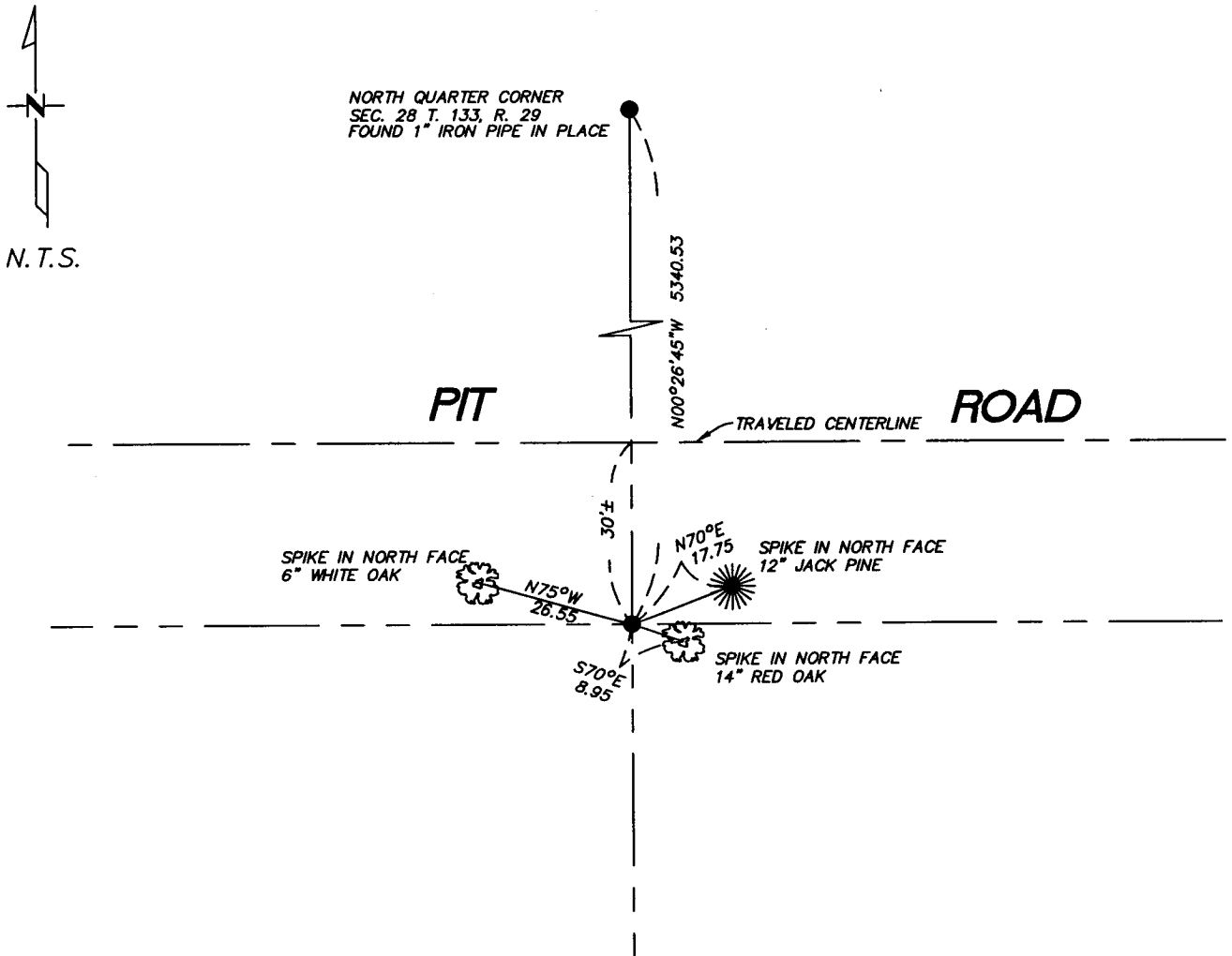
At the corner location shown on the sketch:

On 10/03/05 found a Triangular Shaped Monument
DATE

left monument as found lowered monument removed monument (explain)

On _____ placed a _____
DATE

SKETCH OF REFERENCE TIES



Statement of evidence relative to this corner location is on back of page.

I hereby certify that this document and the data contained herein was prepared by me or under my direct supervision.

[Signature] 3/23/06
SIGNATURE DATE

Registration No. 43932

- Land Surveyor Professional Engineer
- County Surveyor County Engineer

OFFICE OF THE COUNTY RECORDER
County of _____

I hereby certify that this document was filed in the Co. Recorders office at _____ M. on the _____ day of _____ A.D., 20____

County Recorder _____
By _____, Deputy

DOCUMENT NO. _____

Statement of Evidence

North 1/4, Section 33, T. 133N. R. 29W., 5th P.M.

1870 - Wood post was set for corner.

May 1998- Jim Nielson (R.L.S. #11865) Certificate of Survey shows Monument Found

April 2000- Jim Nielson (R.L.S. #11865) Certificate of Survey shows Monument Found

10/03/05- Westwood Professional Services, Inc. finds Triangular Shaped Monument in place. Position agrees with monumented west lines of the plat of HARDY LAKE ESTATES, RLS #21 AND Jim Nielson (R.L.S. #11865) Certificates. Ties to which are shown on the front of this sheet.

A000515679

OFFICE OF COUNTY RECORDER
CASS COUNTY MINNESOTA

CERTIFIED, FILED, AND/OR
RECORDED ON
07/24/2006 09:43:53AM

AS DOC #: A000515679
PAGES: 2
REC FEES: \$0.00

KATHRYN M. NORBY
COUNTY RECORDER

BY Kathryn M. Norby
DEPUTY