

CERTIFICATE OF LOCATION OF GOVERNMENT CORNER

NORTHEAST Corner of Section 21, Township 138, Range 29, 5th P.M.

STATE OF MINNESOTA, County of CASS

At the corner location shown on the sketch:

On 10-10-95 found a 1 1/4" IRON PIPE (DOWN 0.4') IN ROAD
DATE

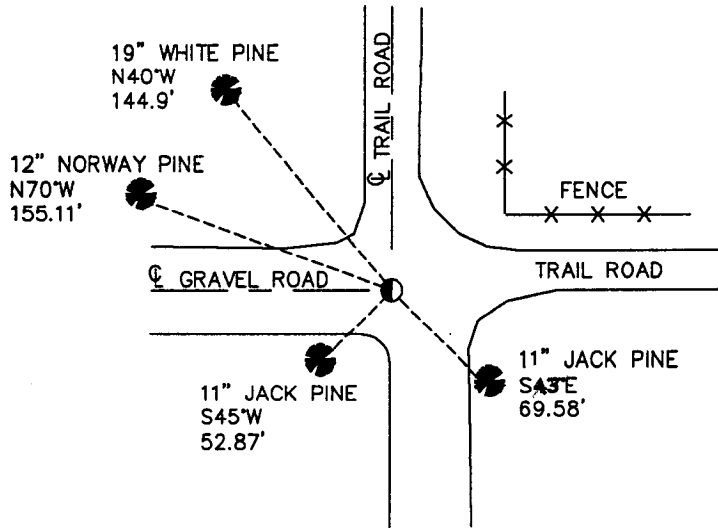
left monument as found, lowered monument, removed monument (explain)

On _____ Placed a _____
DATE

SKETCH OF REFERENCE TIES



NOTE:
MONUMENT IS:
ON EXTENDED CENTER LINE ROAD W
ON W EDGE OF ROAD S
ON EXTENDED CENTER LINE TRAIL N
ON S EDGE TRAIL E
TIES TO PINE TREES WERE TAKEN IN 1981
BUT NOT CHECKED ON 10-10-95.



NAD 1983
CROW WING
COUNTY
COORDINATES
N 320875.18
E 530836.35

NOT TO SCALE

Statement of evidence relative to this corner location is on back of page.

APRIL '97
FOM01854

I hereby certify that this document and the data contained herein was prepared by me or under my direct supervision.

John D. Walker 4/24/97
SIGNATURE DATE

License Number 16098

Land Surveyor, Professional Engineer
 County Surveyor, County Engineer

OFFICE OF THE COUNTY RECORDER

County of _____

I hereby certify that this document was filed in the Co. recorders office at _____ .M. on the _____ day of _____ A.D., 19____

County Recorder _____

By _____, Deputy

DOCUMENT NO. _____

Northeast Corner Section 21, Township 138 North, Range 29 West

The Department of Natural Resources, Bureau of Engineering contacted the following offices for information regarding this corner:

MN Secretary of State
 Crow Wing County Surveyor
 Widseth, Smith and Nolting of Brainerd
 Landecker and Associates of Pequot Lakes
 Landecker and Associates of Walker
 Comstock and Davis of Brainerd

- 1865 The U.S. General Land Office field notes, on file in the Secretary of States Office, show this corner to be marked with a post and the following bearing trees are marked:
 Black Pine 6" N 69°E 51 links (33.66')
 Black Pine 4" N 67° W 106 links (69.96')
 Black Pine 5" S 48° E 9 links (5.94')
 Black Pine 4" S 25° E 7 links (4.62')
- 1919 John Curo set a 2"x48" iron pipe for this corner from the remains of the old U.S. bearing trees northeast and southeast. He shows the following measurement:
 5351.80 feet to the Northeast Corner of Section 22.
- 1981 Landecker and Associates found a 1 ½" iron pipe, down 6". They took ties to four pine trees.
- 1995 The DNR survey crew found an 1 1/4" iron pipe, down 0.4' at the approximate PI of roads. The ties weren't checked for. The distance to the Northeast Corner of Section 22 is 5349.27'. The position of the monument was located with GPS.

For more information on our survey in this area please contact MN DNR, Bureau of Engineering, Survey Section, 1601 Minnesota Drive, Brainerd, MN 56425.

A000515671

OFFICE OF COUNTY RECORDER
CASS COUNTY MINNESOTACERTIFIED, FILED, AND/OR
RECORDED ON
07/24/2006 09:43:45AMAS DOC #: A000515671
PAGES: 2
REC FEES: \$0.00KATHRYN M. NORBY
COUNTY RECORDERBY Kathryn M. Norby
+V DEPUTY