

# CERTIFICATE OF LOCATION OF GOVERNMENT CORNER

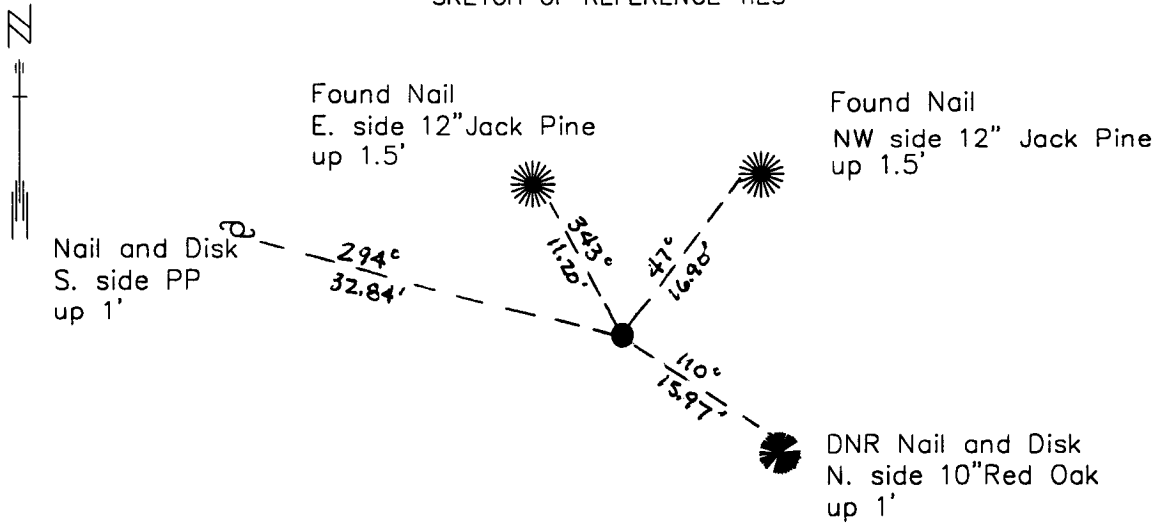
NORTHEAST Corner of Section 33, Township 133 N, Range 29 W, 5TH P.M.

STATE OF MINNESOTA, County of CASS

At the corner location shown on the sketch:

- On 7/7/97 found a 1 1/4 INCH IRON PIPE, AT GROUND LEVEL, 22.5 FEET EAST  
OF THE CENTERLINE OF THE POWER LINE CLEARING  
 left monument as found,     lowered monument,     removed monument (explain)
- On \_\_\_\_\_ Placed a \_\_\_\_\_  
DATE

### SKETCH OF REFERENCE TIES



NAD83 CASS CO. COORDINATES
N 151219.22
E 535207.64

ALL AZIMUTHS TAKEN WITH COMPASS

Statement of evidence relative to this corner location is on back of page.

DATE 2/24/98  
FILE SPK00139

I hereby certify that this document and the data contained herein was prepared by me or under my direct supervision.

John D. Walker 2/25/96  
SIGNATURE DATE

License Number 16098  
 Land Surveyor,     Professional Engineer  
 County Surveyor,     County Engineer

OFFICE OF THE COUNTY RECORDER  
County of \_\_\_\_\_

I hereby certify that this document was filed in the Co. recorders office at \_\_\_\_\_ .M. on the \_\_\_\_\_ day of \_\_\_\_\_ A.D., 19\_\_\_\_

County Recorder \_\_\_\_\_  
By \_\_\_\_\_, Deputy  
DOCUMENT NO. \_\_\_\_\_

**Northeast Corner Section 33, Township 133 North, Range 29 West**

The Department of Natural Resources, Bureau of Engineering contacted the following offices for information regarding this corner:

MN Secretary of State  
 Cass County Surveyor  
 Crow Wing County Surveyor  
 Wally Buckler, Land Surveyor  
 Central Minnesota Surveying  
 Widseth, Smith and Nolting of Brainerd  
 Wadena County Recorder (has Howard's records)

- 1870 The U.S. General Land Office field notes, on file in the Secretary of State's Office, show this corner to be marked with a post and the following bearing trees are marked:  
 Norway Pine 12" S 51° E 37 links (24.42')  
 Norway Pine 12" S 42° E 39 links (25.74')  
 Oak 3" S 30° W 29 links (19.14')  
 Blk. Pine 10" N 43° W 95 links (62.70')
- 1953 John Howard surveyed the plat of River Retreat in Section 34. He shows an iron pipe at the corner and the following ties  
 PP NW 32.1'  
 Red Oak 6" West 44.3'  
 Red Oak 6" South 51.0'  
 Norway Pine 22" East 192.3'
- 1966 Dean Anderson made a survey in Government Lot 1, Section 33 for Crow Wing State Park. He shows an iron monument in place for this corner. He set an iron pipe 208.56' southerly of the corner on the east line of Section 33.
- 1981 Wally Buckler found an iron pipe in place for this corner. The following ties were taken:  
 Jack Pine 12" NNE 16.88'  
 Jack Pine 10" WNW 11.26'
- 1997 The DNR survey crew found a 1 ½" iron pipe, at ground level, 22' easterly of the centerline of the power line clearing. The iron pipe fits Anderson's survey with an iron pipe found 208.65' southerly of the corner and fits Buckler's ties to the Jack Pines. The pipe also fits Howard's tie to the PP northwesterly within 0.8'. This is a new pole since 1953, but it should be in the same vicinity. The iron pipe was accepted as marking the obliterated location of the corner.

For more information on our survey in this area please contact MN DNR, Bureau of Engineering, Survey Section, 500 Lafayette Road, St. Paul, MN 55155-4029.

