

A000515663

OFFICE OF COUNTY RECORDER
CASS COUNTY MINNESOTA

CERTIFIED, FILED, AND/OR
RECORDED ON
07/24/2006 09:43:37AM

AS DOC #: A000515663
PAGES: 2
REC FEES: \$0.00

KATHRYN M. NORBY
COUNTY RECORDER

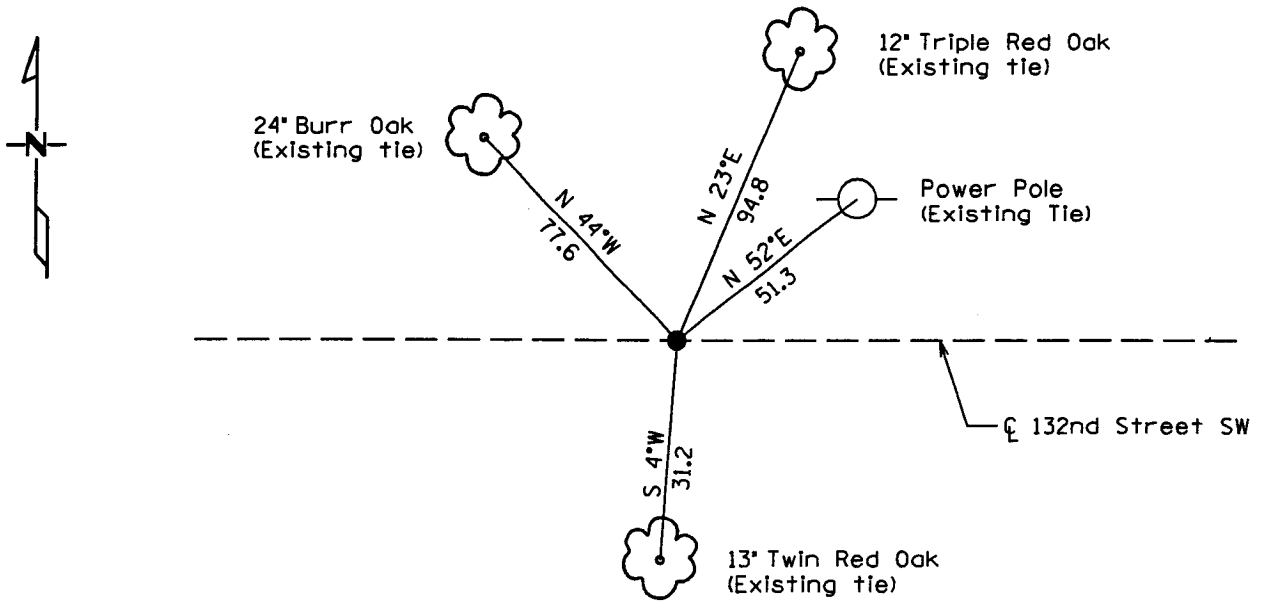
BY Kathryn M. Norby DEPUTY

CERTIFICATE OF LOCATION OF GOVERNMENT CORNER

North Quarter Corner of Section 23, Township 133, Range 31
West Principal Meridian, State of Minnesota, County of Cass

At the corner location shown on the sketch:

- On 6/15/06 found a Telspar Aluminum capped monument
DATE
- left monument as found lowered monument removed monument (explain)
- On _____ placed a _____
DATE



Statement of evidence for this corner location is on back of this page.

I hereby certify that this document was researched and prepared by me or under my direct supervision.

Signature *Joyce K. Larson* Date 7-11-06 License No. 42619
 Title: Land Surveyor Professional Engineer County Surveyor County Engineer

Statement of Evidence: North Quarter corner Section 23, Township 133 North, Range 31 West, Cass County, Minnesota.

The Original Government Survey was run in 1863 and a wood post was set to mark the corner. Bearing tree ties were made to two aspen trees.

In 1985 Mr. Terry Freeman recovered a ¾" iron pipe monument and set a telspar monument with a stamped aluminum cap. Bearing tree ties were made to a power pole, a burr oak, a triple red oak, and a twin red oak.

In 1990 Mr. Walt Curo shows 1987 information on a survey.

In 2006 Kramer Leas DeLeo recovered a telspar monument with a stamped aluminum cap. Bearing tree ties were recovered in a power pole, a burr oak, a triple red oak, and a twin red oak. Kramer Leas DeLeo accepts this as the correct location for the corner.

For details and survey analysis contact Kramer Leas DeLeo in Brainerd, Minnesota.