

CERTIFICATE OF LOCATION OF GOVERNMENT CORNER

NORTH QUARTER Corner of Section 8, Township 140 N, Range 28 W, 5th P.M.

STATE OF MINNESOTA, County of CASS

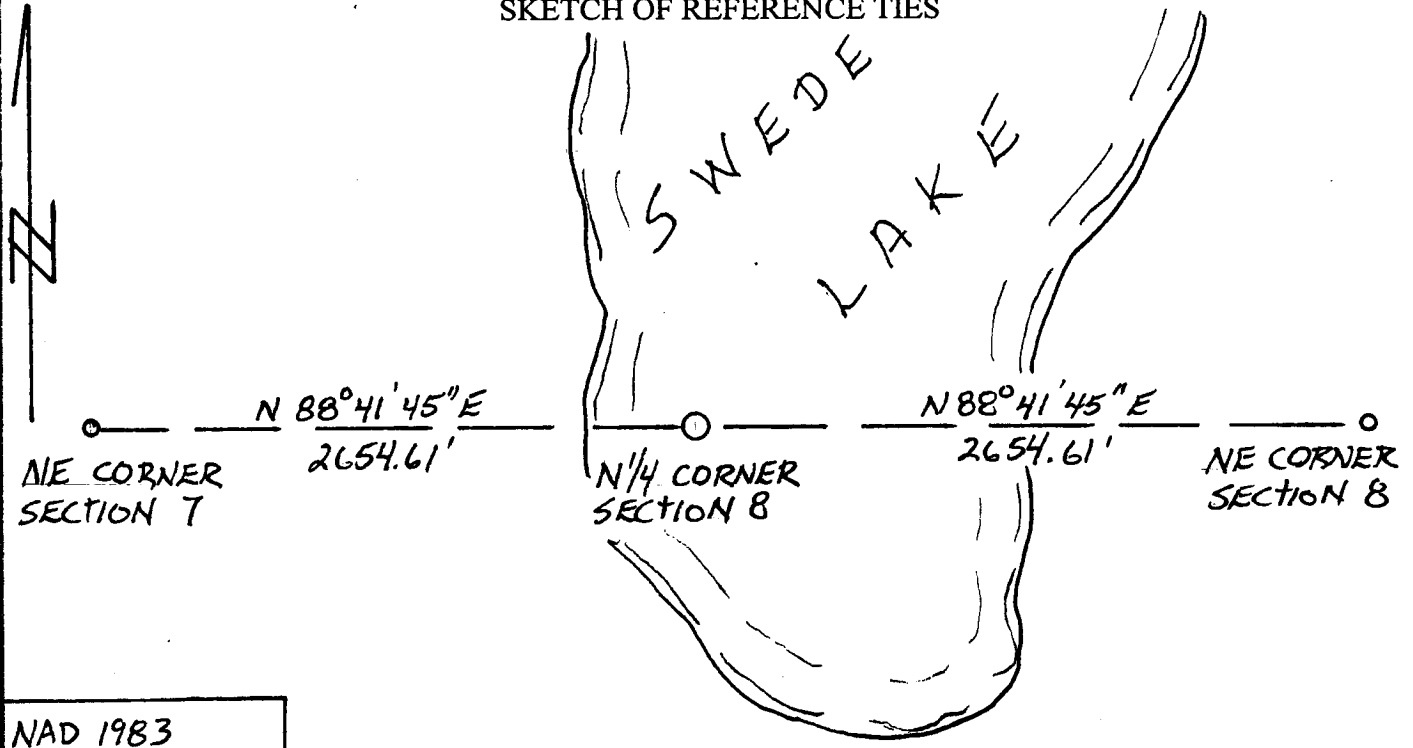
At the corner location shown on the sketch:

On _____ found a _____
Date _____

left monument as found, lowered monument removed monument (explain)

On _____ placed a _____
Date _____

SKETCH OF REFERENCE TIES



NAD 1983
 CASS COUNTY
 COORDINATES
 N = 158445.342
 E = 492405.238

BEARING IS COUNTY ORIENTATION

Statement of evidence relative to this corner is on the back of this page

I hereby certify that this document and the data contained herein was prepared by me or under my direct supervision.

Lowell R. Pommerening 8-15-05
 Lowell R. Pommerening Date
 Registration No. 17005
 Licensed Land Surveyor

OFFICE OF THE COUNTY RECORDER
County of _____

I hereby certify that this document was filed in the Co. Recorders Office at ____ M. on the ____ day of _____ A.D., 20__

County Recorder _____
By _____, Deputy
DOCUMENT NO. _____

North Quarter Corner Section 8, Township 140 North, Range 28 West

The DNR Land Survey Unit contacted the following office for survey information on this corner:

MN Secretary of State
Cass County Surveyor's Office

1870 The U.S. General Land Office (GLO) field notes, on file in the Secretary of State's Office, describe this corner as being in a pond. A witness corner was established 2.00 chains West, being a set post from which:

a W. Pine 18" dia bears South 40° West 70 links
no other tree convenient

The field notes show where the pond was encountered and records the following:

2508 feet from the witness corner to the northwest corner Section 8
1815 feet from the northeast corner Section 8 to the edge of pond
957 feet edge to edge

2005 April, the DNR Land Survey Unit conducted a search for this corner, and located the east and west edges of the open water of Swede Lake near the north line of Section 8. A straight line between adjoining section corners intersecting these edges yielded these distances:

2571.3 feet from the northwest corner Section 8 to the west edge of lake
2040.2 feet from the northeast corner Section 8 to the east edge of lake
696.5 feet edge to edge

No original evidence of the witness corner could be found. When no evidence of a corner is found, the corner is considered lost. According to the Manual of Instructions for the Survey of the Public Lands of the United States 1973, prepared by the Bureau of Land Management, U.S. Dept of the Interior, in Chapter 5-38 which states: "All lost quarter-section corners on the section boundaries within the township will be restored by single proportionate measurement between the adjoining section corners." Computed the lost position for this corner by single proportionate measurement and found it to measure:

2654.61 feet from the adjoining section corners

Analysis of the available information led the DNR Land Survey Unit to conclude that the lost position should be used for the location of the corner. It is unknown what and where the GLO considered the edges of the pond (now Swede Lake).

A000509713

OFFICE OF COUNTY RECORDER
CASS COUNTY MINNESOTA

CERTIFIED, FILED, AND/OR
RECORDED ON
02/08/2006 11:46:52AM

AS DOC #: A000509713
PAGES: 3
REC FEES: \$0.00

KATHRYN M. NORBY
COUNTY RECORDER

BY Kathryn M. Norby
N DEPUTY