

CERTIFICATE OF LOCATION OF GOVERNMENT CORNER

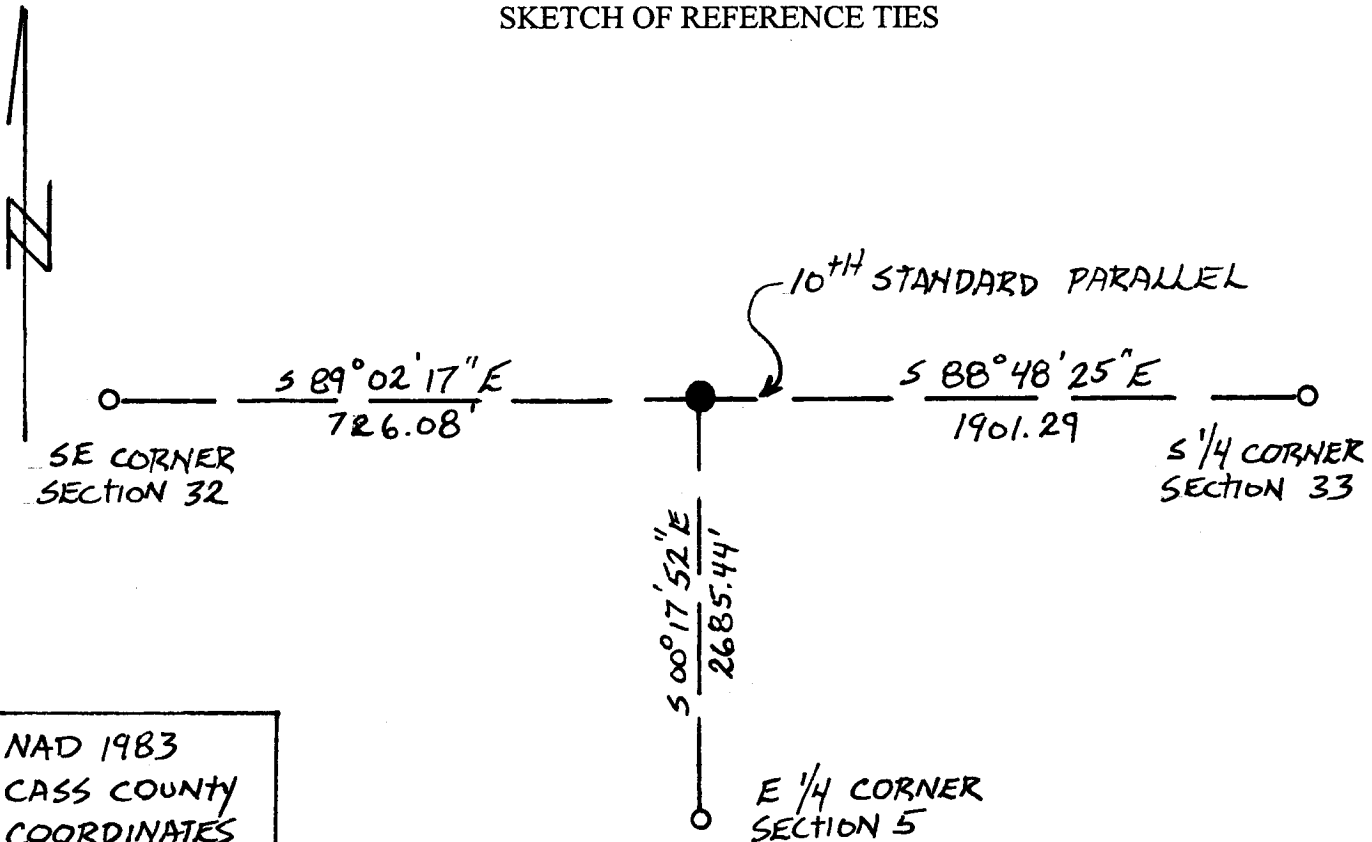
CLOSING Corner of Sections 4 & 5, Township 140 N, Range 28 W, 5th P.M.

STATE OF MINNESOTA, County of CASS

At the corner location shown on the sketch:

- On 3-17-05 found a 1" x 16" SOLID BENT IRON ROD OVER A 1 1/2" IRON PIPE
Date PIPE
- left monument as found, lowered monument removed monument (explain)
- On 3-17-05 placed a 3/4" x 24" REBAR INSIDE 1 1/2" IRON PIPE, DOWN 0.3'
Date _____

SKETCH OF REFERENCE TIES



NAD 1983
 CASS COUNTY
 COORDINATES
 N = 163819.670
 E = 495074.709

BEARINGS ARE COUNTY ORIENTATION

Statement of evidence relative to this corner is on the back of this page

I hereby certify that this document and the data contained herein was prepared by me or under my direct supervision.

Lowell R. Pommerening 8-15-05
 Lowell R. Pommerening Date
 Registration No. 17005
 Licensed Land Surveyor

OFFICE OF THE COUNTY RECORDER
County of _____

I hereby certify that this document was filed in the Co. Recorders Office at ____ M. on the ____ day of _____ A.D., 20__

County Recorder _____
By _____, Deputy
DOCUMENT NO. _____

Closing Corner Section 5, Township 140 North, Range 28 West

The DNR Land Survey Unit contacted the following office for survey information on this corner:

MN Secretary of State
Cass County Surveyor's Office

- 1870 The U.S. General Land Office (GLO) field notes, on file in the Secretary of State's Office, describe this corner as a set post from which:
a Dry N. Pine 24" dia bears South 20° East 20 links
no other tree convenient
The notes also describe this corner as being 11.00 chains east of the standard corner to Sections 32 and 33.
- 1925 The Cass County Land Corner Record, on file in the County Surveyor's Office, shows subsequent corner restoration. John Greene established this corner, and possibly in 1927 revisited it.
- 1941 The Cass County Land Corner Record, on file in the County Surveyor's Office, shows subsequent corner restoration. The CCC's Book 15, page 48 of Washburn Lake, show this corner was set at an approximate location 5280 feet from the Southeast Corner Section 5. It was 231 feet west of post with scribing, also found Iron Pipe and blazed a pine north of post.
- 1967 A section subdivision worksheet by Robert Schneider RLS# 5740, describes this corner as a 1 ½" iron pipe with tow reference ties. The corner is shown to measure:
2686.65 feet from the east quarter corner Section 5
726.30 feet from the southeast corner Section 32
- 1989 A Certificate of Survey by Landecker & Associates, David Landecker RLS #17008, on file with the County Surveyor, shows the Monumentation of the 10th Standard Parallel for Range 28. Monuments are shown for Sections in Township 141 only.
- 2005 April, the DNR Land Survey Unit conducted a search for this corner and found a 1" x 16" solid bent iron rod, down 0.5 feet over a 1 ½" iron pipe. Also found one of the 1967 reference ties, which agree with the found monuments. The iron pipe was found to measure:
2685.44 feet from the east quarter corner Section 5
726.08 feet from the southeast corner Section 32

Analysis of the available information led the DNR Land Survey Unit to conclude that the found monuments mark the location of the corner. They are in agreement with record surveys.

A000509709

OFFICE OF COUNTY RECORDER
CASS COUNTY MINNESOTA

CERTIFIED, FILED, AND/OR
RECORDED ON
02/08/2006 11:46:48AM

AS DOC #: A000509709
PAGES: 3
REC FEES: \$0.00

KATHRYN M. NORBY
COUNTY RECORDER

BY Kathryn M. Norby DEPUTY
K