

CERTIFICATE OF LOCATION OF GOVERNMENT CORNER

N 1/4 _____ Corner of Section 8, Township 137, Range 29
5TH Principal Meridian, State of Minnesota, County of Cass

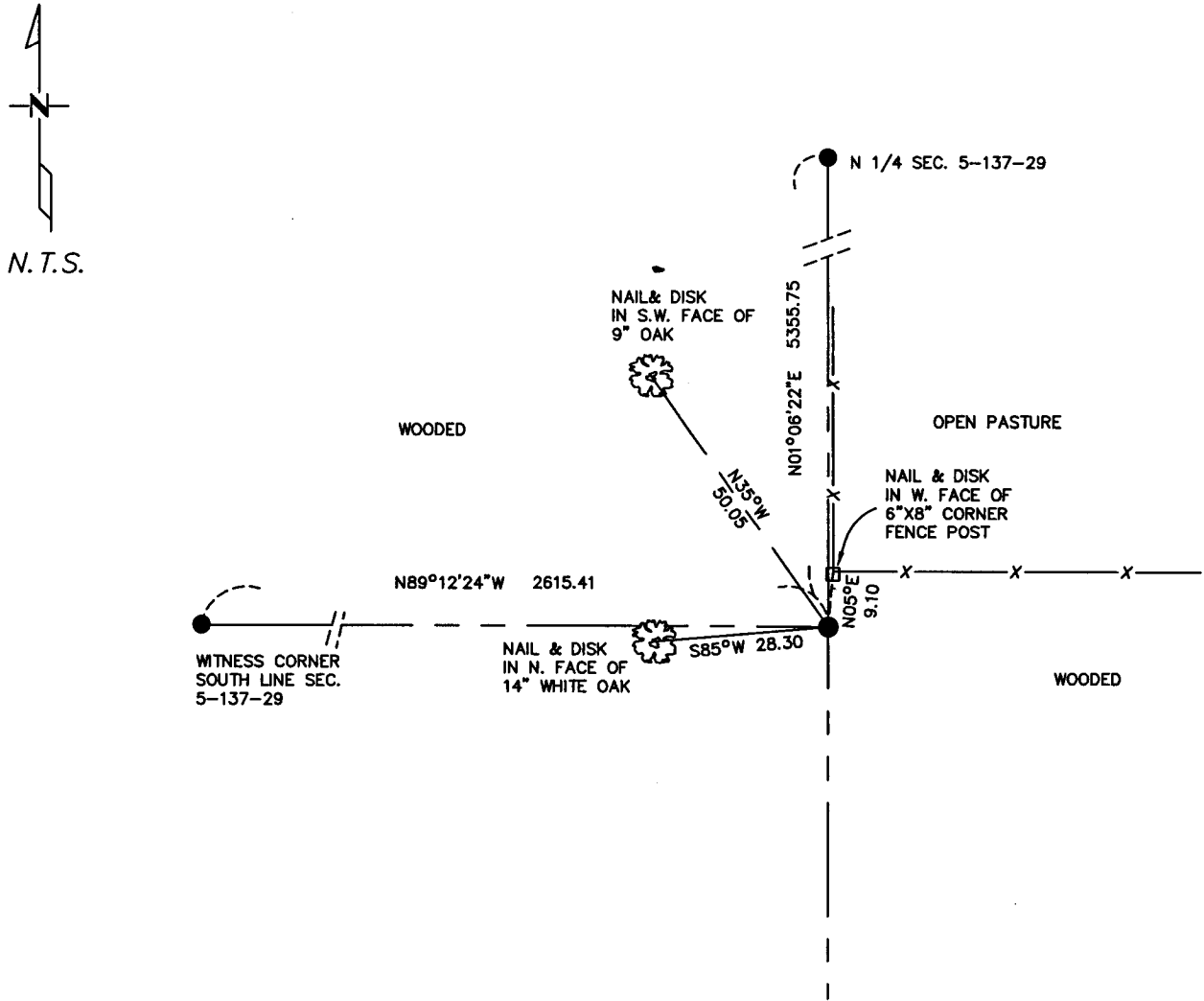
At the corner location shown on the sketch:

On 10-20-04 found a 2" IRON PIPE
DATE

left monument as found lowered monument removed monument (explain)

On _____ placed a _____
DATE

SKETCH OF REFERENCE TIES



Statement of evidence relative to this corner location is on back of page.

I hereby certify that this document and the data contained herein was prepared by me or under my direct supervision.

Bruce Linn 5/27/05
SIGNATURE DATE

Registration No. 17253

- Land Surveyor Professional Engineer
 County Surveyor County Engineer

OFFICE OF THE COUNTY RECORDER
 County of _____

I hereby certify that this document was filed in the Co. Recorders office at _____ M. on the _____ day of _____ A.D., 20____

County Recorder _____

By _____, Deputy

DOCUMENT NO. _____

Statement of Evidence

N 1/4, Section 8, T. 137, R. 29 5th P.M.

1865- Set Wood Post

Undated- Landecker and Associates Inc. section subdivision shows found Iron Pipe

2/10/05 - Westwood Professional Services Found a 2" Iron Pipe in place the ties to which are shown on the front of this Certificate

A000509705

OFFICE OF COUNTY RECORDER
CASS COUNTY MINNESOTA

CERTIFIED, FILED, AND/OR
RECORDED ON
02/08/2006 11:46:44AM

AS DOC #: A000509705
PAGES: 2
REC FEES: \$0.00

KATHRYN M. NORBY
COUNTY RECORDER

BY Kathryn M. Norby
DEPUTY