

I HEREBY CERTIFY THAT THIS DOCUMENT AND THE DATA CONTAINED HEREIN WAS PREPARED BY ME OR UNDER MY DIRECT SUPERVISION.

Ronald L. Carnell Sr. Aug. 15, 2005
RONALD L. CARNELL SR.
MN PLS NO. 43415

- LAND SURVEYOR PROFESSIONAL ENGINEER
 COUNTY SURVEYOR COUNTY ENGINEER

CERTIFICATE OF LOCATION OF GOVERNMENT CORNER

NE CORNER OF SECTION 17, TOWNSHIP 143N, RANGE 31 W, 5TH PRINCIPAL MERIDIAN

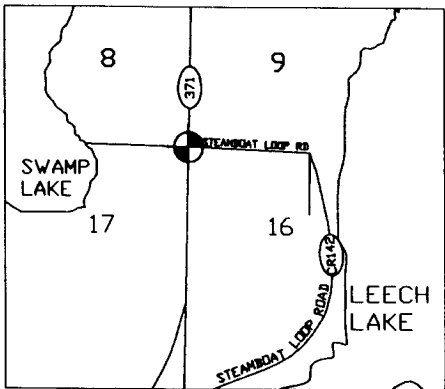
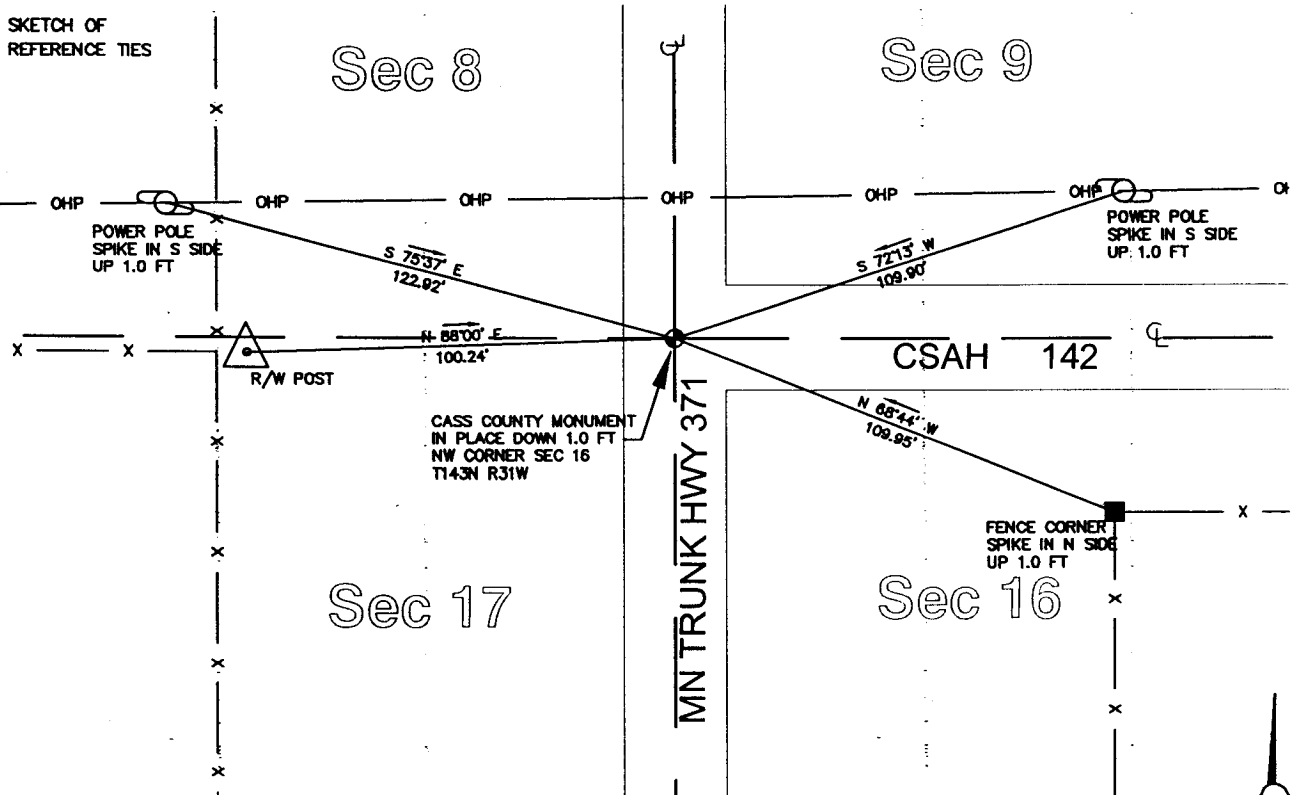
STATE OF MINNESOTA, COUNTY OF CASS

AT THE CORNER LOCATION SHOWN ON THE SKETCH:

ON JAN 19, 2005 FOUND A(N) CASS COUNTY MONUMENT IN PLACE

LEFT MONUMENT AS FOUND, LOWERED MONUMENT, REMOVED MONUMENT (EXPLAIN)
ON _____, 2005 PLACED A(N) _____

SKETCH OF
REFERENCE TIES



STATEMENT OF EVIDENCE RELATIVE TO THIS CORNER LOCATION IS ON BACK OF PAGE

Statement of Evidence

Northeast corner Section 17, Township 143 North, Range 31 West

The original corner was established and monumented by the Government Land office in 1879. The monument set is described as a post which is assumed to be a wood post. Four bearing trees were tied in for future reference.

On May 24, 1976, the D.N.R. Engineering Bureau contacted the Cass County offices of Recorder, Auditor, Engineer, Surveyor and the Minnesota Department of Transportation.

In 1919 the GLO Resurveyed the area and found a galvanized iron pipe, 2 1/2" diameter, set by the County Surveyor, north and alongside the Local Post. The GLO set an iron post, 36" x 2", 28" in the ground, with brass cap marked. Two original bearing trees were in place and two new bearing trees were located for future reference.

The 1931 alignment plans for Minn. #371 identify the corner as a U.S.G.L.O. iron pipe with brass cap.

On January 19, Emmons and Olivier Resources located the corner. It had a Cass County Monument. After analysis of all survey information the corner was accepted as marking the location.

A000509698

OFFICE OF COUNTY RECORDER
CASS COUNTY MINNESOTA

CERTIFIED, FILED, AND/OR
RECORDED ON
02/08/2006 11:46:37AM

AS DOC #: A000509698
PAGES: 2
REC FEES: \$0.00

KATHRYN M. NORBY
COUNTY RECORDER

BY Kathryn M. Norby DEPUTY
#