

A000509693

OFFICE OF COUNTY RECORDER
CASS COUNTY MINNESOTA

CERTIFIED, FILED, AND/OR
RECORDED ON
02/08/2006 11:46:32AM

AS DOC #: A000509693
PAGES: 2
REC FEES: \$0.00

KATHRYN M. NORBY
COUNTY RECORDER

BY *Kathryn M. Norby* DEPUTY

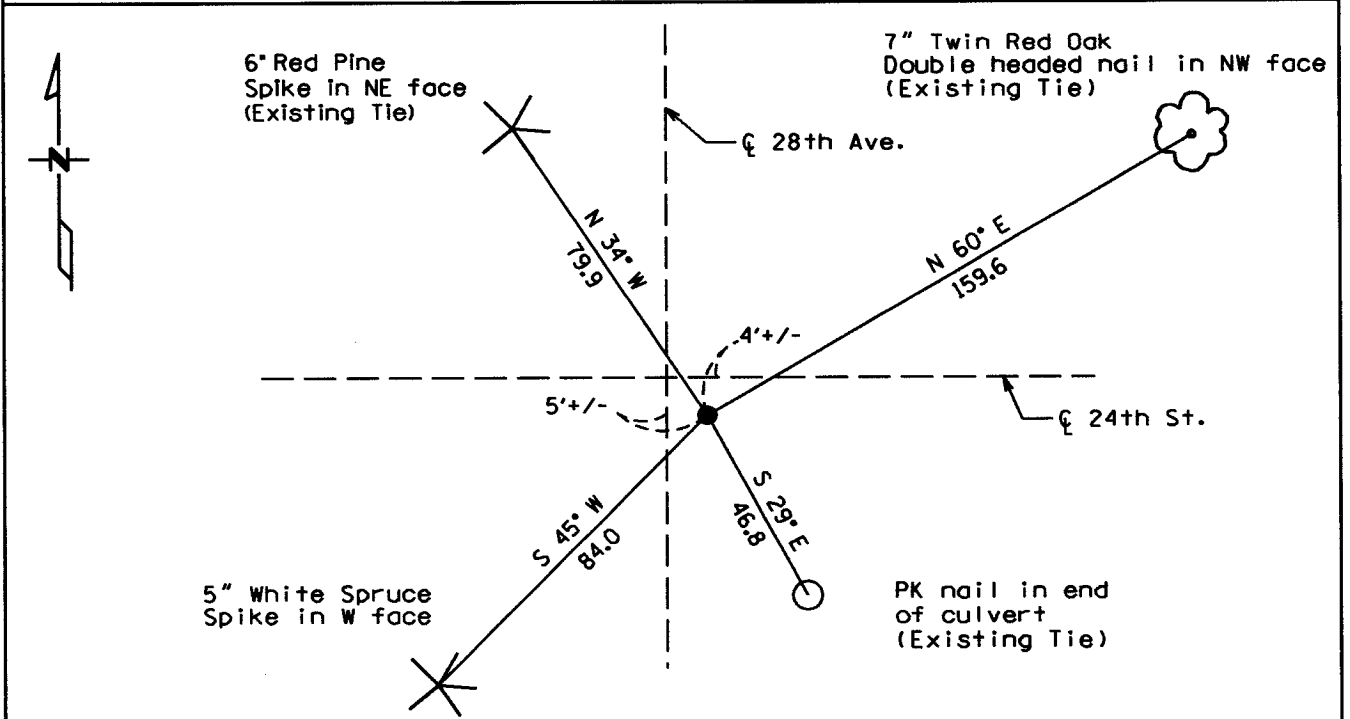
CERTIFICATE OF LOCATION OF GOVERNMENT CORNER

Northeast Corner of Section 2, Township 137, Range 30

West Principal Meridian, State of Minnesota, County of Cass

At the corner location shown on the sketch:

- On 3/24/05 found a PK nail
DATE
- left monument as found lowered monument removed monument (explain)
- On _____ placed a _____
DATE



Statement of evidence for this corner location is on back of this page.

I hereby certify that this document was researched and prepared by me or under my direct supervision.

Signature *Janet M. Lee* Date 7/28/05 License No. 42619

Title: Land Surveyor Professional Engineer County Surveyor County Engineer

Statement of Evidence:

Northeast Corner Section 2, Township 137 North, Range 30 West

The Original Public Land Survey was run in 1865 and a wood post was set to mark the corner. Bearing tree ties were made to four Black Pines.

In 1908 Mr. John Curo set an iron pipe monument.

In 1911 Mr. Moulster recovered an iron pipe monument.

In 1965 Mr. R.F. Schneider recovered an iron pipe monument. Bearing tree ties were made to two Corner Fence Posts, a Telephone Pole, and a Power Pole.

In 1980 Mr. Myron Landecker shows the monument on a Certificate of Survey.

In 1981 Mr. Myron Landecker shows the monument on the Plat of Golf View Estates.

In 1999 The Cass County Surveyor's Office set a PK nail. Bearing tree ties were made to a Twin Red Oak, a Corrugated Metal Pipe, and two Red Pines.

In 2005 Kramer Leas DeLeo recovered a PK nail and made recovered ties to a Corrugated Metal Pipe, a Twin Red Oak, and a Red Pine. An additional bearing tree tie was made to a White Spruce. Kramer Leas DeLeo accepts this as the correct location for the corner.

For details and survey analysis contact Kramer Leas DeLeo in Baxter, Minnesota.