

CERTIFICATE OF LOCATION OF GOVERNMENT CORNER

Northeast Corner _____ Corner of Section 26 , Township 135 , Range 30
5TH Principal Meridian, State of Minnesota, County of Cass

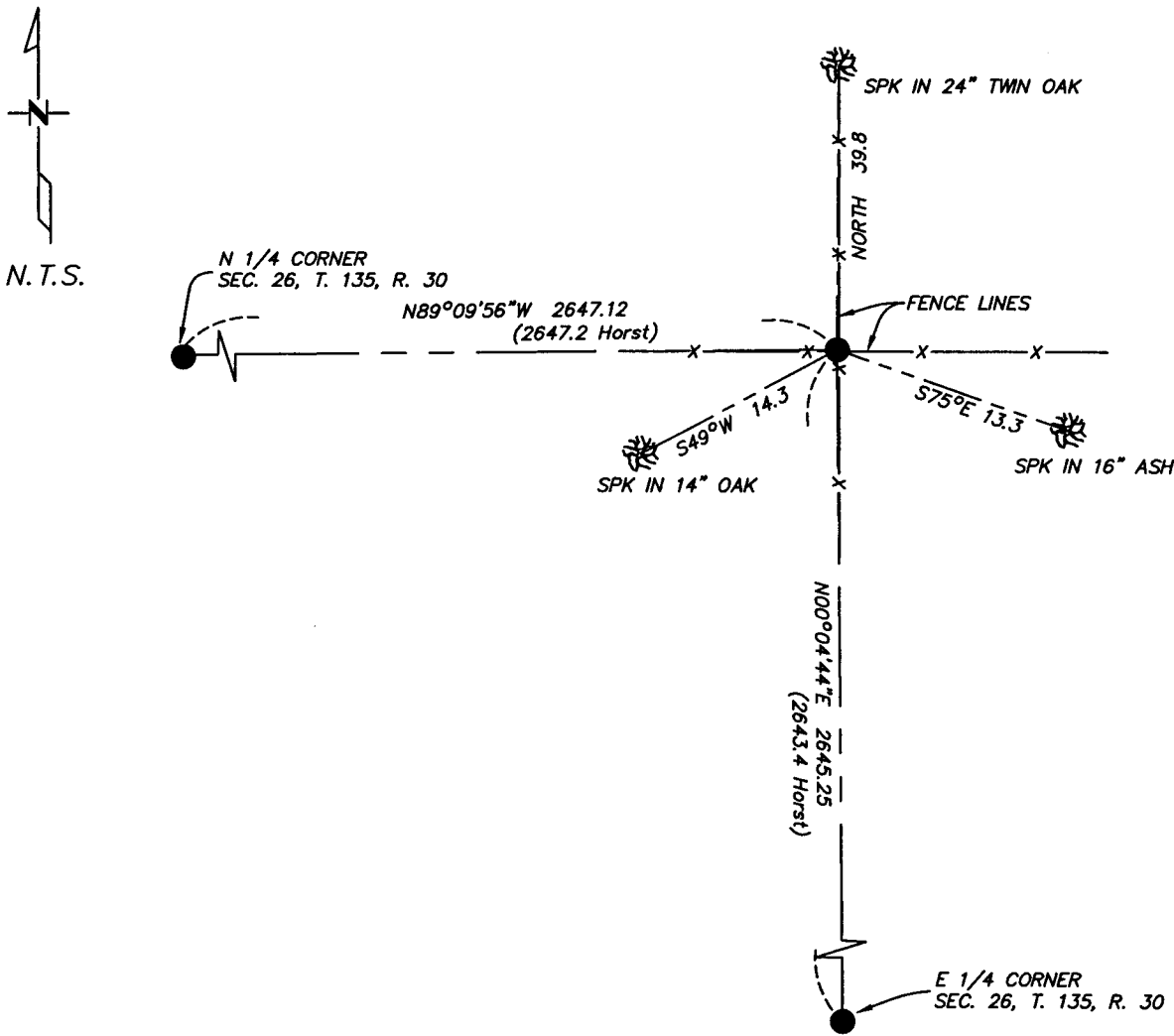
At the corner location shown on the sketch:

On 9/12/05 found a 1.5' Iron pipe up 2'
DATE

left monument as found lowered monument removed monument (explain)

On _____ placed a _____
DATE

SKETCH OF REFERENCE TIES



Statement of evidence relative to this corner location is on back of page.

I hereby certify that this document and the data contained herein was prepared by me or under my direct supervision.

Bruce Linn 9/26/05
SIGNATURE DATE

Registration No. 17253

- Land Surveyor Professional Engineer
- County Surveyor County Engineer

OFFICE OF THE COUNTY RECORDER
County of _____

I hereby certify that this document was filed in the Co. Recorders office at _____ M. on the _____ day of _____ A.D., 20____

County Recorder _____

By _____, Deputy

DOCUMENT NO. _____

Statement of Evidence

Northeast Quarter, Section 26, T. 135N. R. 30W., 5th P.M.

1869 – Wood post set for corner

1921 – E.B. Horst set 2"x48" iron monument. County Resurvey "E-33". Book "C", page 412.

1984 – Freeman/Marcum (survey tech for forestry) found 2" iron pipe up 2.5' leaning south by 6" square cement fence corner post

2005 – Westwood Professional Services, Inc. finds 1.5" pipe in place at fence intersection. Distances from north quarter of Sec. 26 and east quarter of 26 agree well with 1921 E.B. Horst survey. The ties to which are shown on the face of this certificate.

A000509687
OFFICE OF COUNTY RECORDER
CASS COUNTY MINNESOTA
CERTIFIED, FILED, AND/OR
RECORDED ON
02/08/2006 11:46:26AM

AS DOC #: A000509687
PAGES: 2
REC FEES: \$0.00

KATHRYN M. NORBY
COUNTY RECORDER

BY Kathryn M. Norby
HIV DEPUTY