

# CERTIFICATE OF LOCATION OF GOVERNMENT CORNER

Northeast Corner \_\_\_\_\_ Corner of Section 34 , Township 135 , Range 30  
5TH Principal Meridian, State of Minnesota, County of Cass

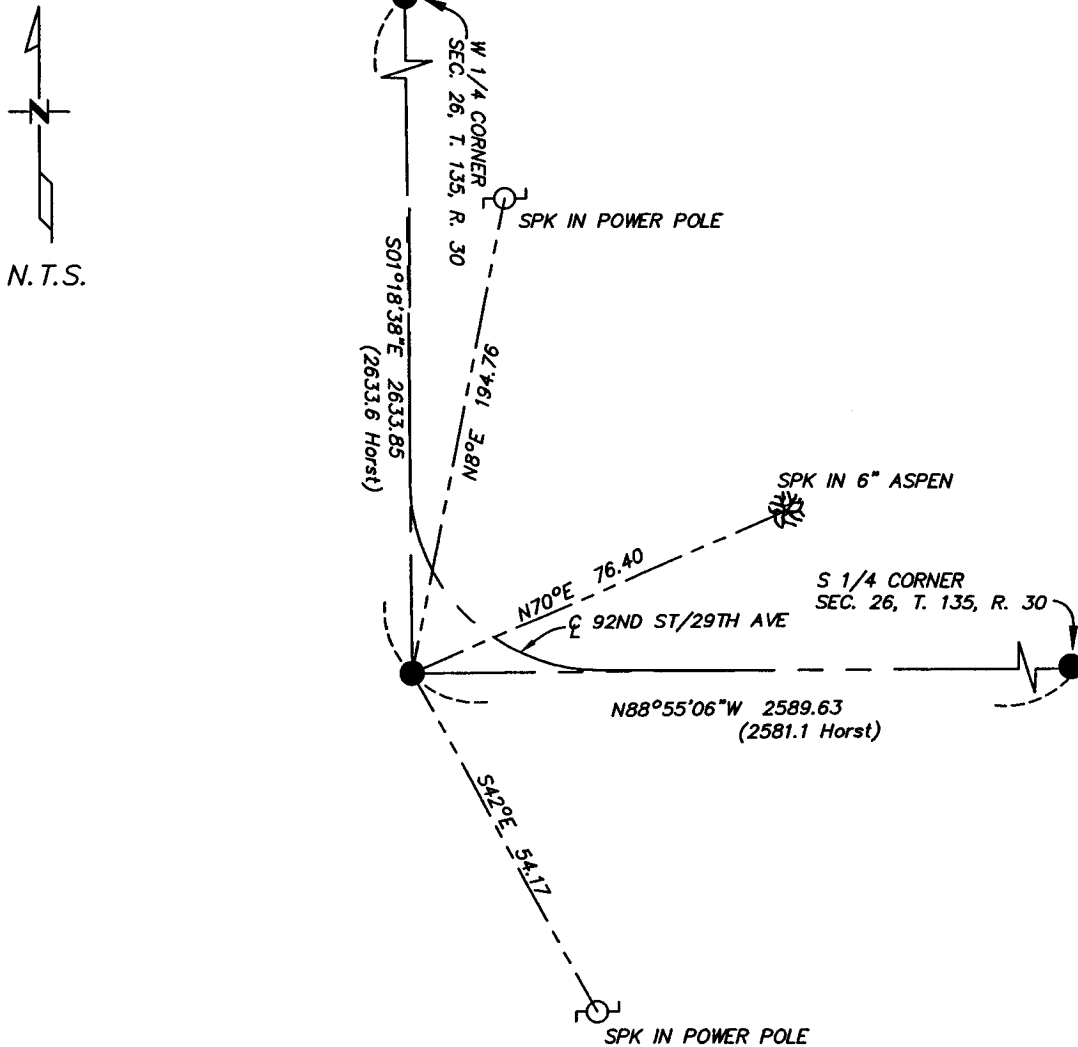
At the corner location shown on the sketch:

On 9/12/05 found a 1.5' Iron pipe  
DATE

left monument as found     lowered monument     removed monument (explain)

On \_\_\_\_\_ placed a \_\_\_\_\_  
DATE

## SKETCH OF REFERENCE TIES



N.T.S.

Statement of evidence relative to this corner location is on back of page.

I hereby certify that this document and the data contained herein was prepared by me or under my direct supervision.

[Signature]      9/26/05  
SIGNATURE      DATE

Registration No. 17253

Land Surveyor     Professional Engineer

County Surveyor     County Engineer

OFFICE OF THE COUNTY RECORDER  
County of \_\_\_\_\_

I hereby certify that this document was filed in the Co. Recorders office at \_\_\_\_\_ M. on the \_\_\_\_\_ day of \_\_\_\_\_ A.D., 20\_\_\_\_

County Recorder \_\_\_\_\_

By \_\_\_\_\_, Deputy

DOCUMENT NO. \_\_\_\_\_

Statement of Evidence

Northeast Quarter, Section 34, T. 135N. R. 30W., 5th P.M.

1869 – Wood post set for corner

1921 – E.B. Horst set 2"x48" iron monument. County Resurvey "E-33". Book "C", page 412.

1925 – Schultz found 2" pipe in road at P.I. 2 feet north of fence to west. County Book "D", page 167

2005 – Westwood Professional Services, Inc. finds pipe in place, the ties to which are shown on the face of this certificate.

A000509686

OFFICE OF COUNTY RECORDER  
CASS COUNTY MINNESOTA

CERTIFIED, FILED, AND/OR  
RECORDED ON  
02/08/2006 11:46:25AM

AS DOC #: A000509686  
PAGES: 2  
REC FEES: \$0.00

KATHRYN M. NORBY  
COUNTY RECORDER

BY Kathryn M. Norby  
#11 DEPUTY