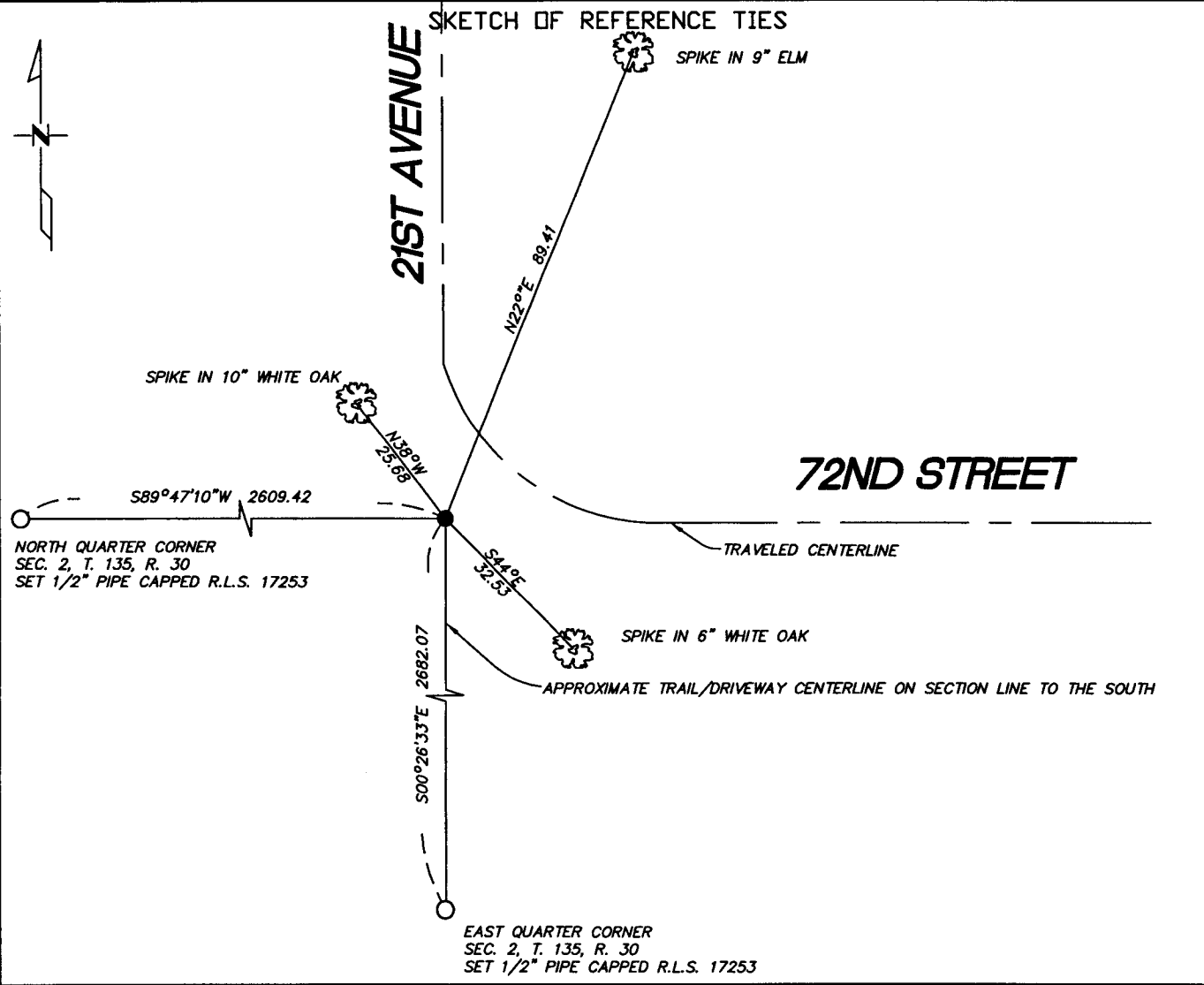


CERTIFICATE OF LOCATION OF GOVERNMENT CORNER

Northeast _____ Corner of Section 1 , Township 135 , Range 30
5TH Principal Meridian, State of Minnesota, County of Cass

At the corner location shown on the sketch:

- On 10/26/2004 found a 2" Pipe In Place
DATE
- left monument as found lowered monument removed monument (explain)
- On _____ placed a _____
DATE



Statement of evidence relative to this corner location is on back of page.

I hereby certify that this document and the data contained herein was prepared by me or under my direct supervision.

Casey Linn 11/10/06
SIGNATURE DATE

Registration No. 17253

- Land Surveyor Professional Engineer
- County Surveyor County Engineer

OFFICE OF THE COUNTY RECORDER
 County of _____

I hereby certify that this document was filed in the Co. Recorders office at _____ M. on the _____ day of _____ A.D., 20____

County Recorder _____
 By _____, Deputy
 DOCUMENT NO. _____

Statement of Evidence:

Northeast corner Section 1, T. 135, R. 30.

- 1858 - Original Gov't Survey set post.
- 1916 - John Curo (County Book B p. 369-376) finds roots of old government bearing trees and a 2' x 4' stake, Curo sets a 2' x 48' pipe with cap.
- 1921 - Horst (Microfilm- roll 10S book 67 page 67) finds Iron monument at township corner.
- 2000 - C.C.S.D. finds 2' pipe down 0.1' at P.I. of centerline of 72nd Avenue and 21st Street.
- 2002 - C.C.S.D. finds 2' pipe and uses G.P.S. to locate it.
- 2003 - Trotter (License #41002) Certificate of Survey shows monument in place.
- 2003 - Landecker and Associates Inc. Sketch shows monument in place.
- 2004 - Westwood Professional Services, Inc. finds 2' pipe in place and takes ties as shown on the face of this certificate.

A000509680

OFFICE OF COUNTY RECORDER
CASS COUNTY MINNESOTA

CERTIFIED, FILED, AND/OR
RECORDED ON
02/08/2006 11:46:19AM

AS DOC #: A000509680
PAGES: 2
REC FEES: \$0.00

KATHRYN M. NORBY
COUNTY RECORDER

BY Kathryn M. Norby
THV DEPUTY