

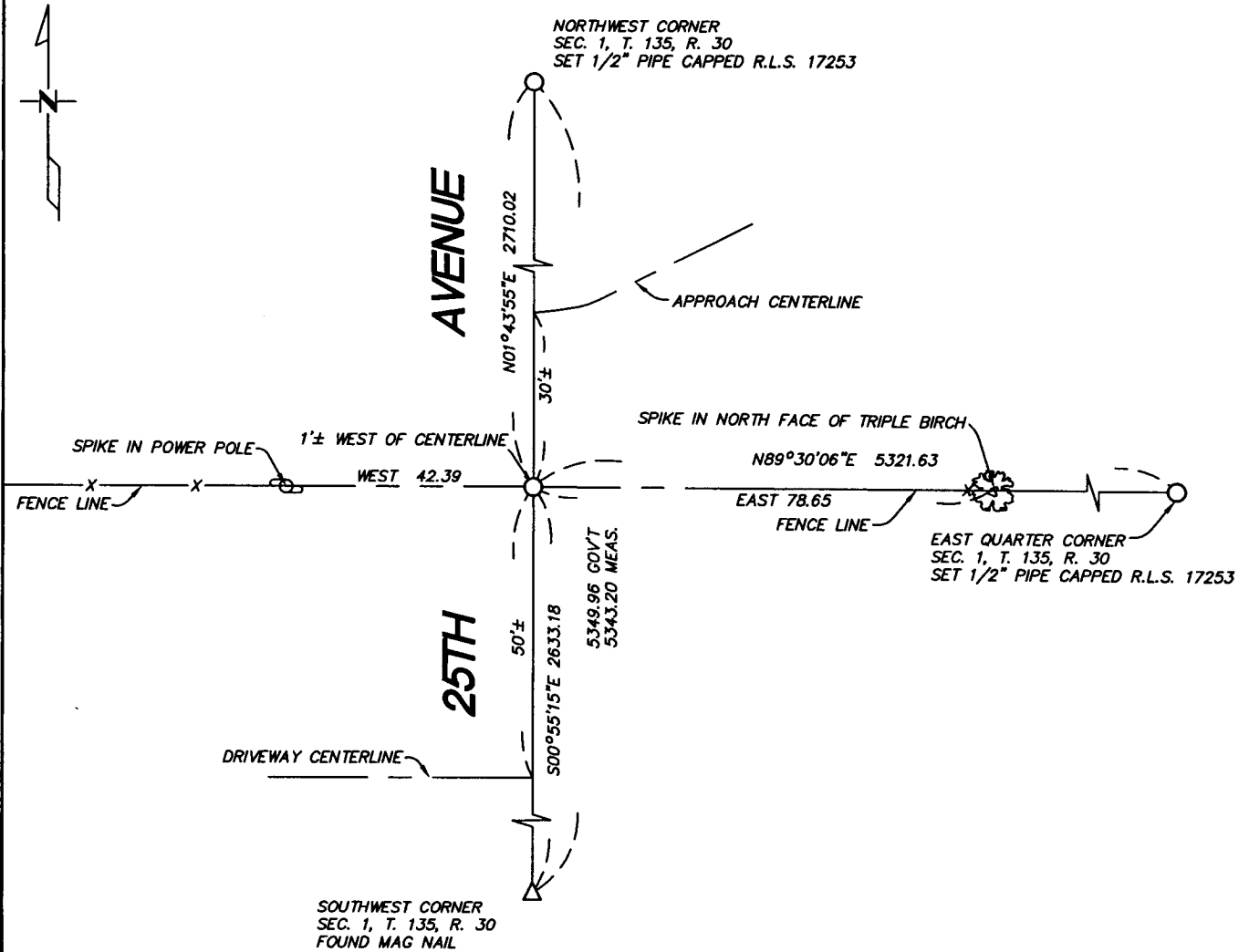
CERTIFICATE OF LOCATION OF GOVERNMENT CORNER

East Quarter _____ Corner of Section 2 , Township 135 , Range 30
5TH Principal Meridian, State of Minnesota, County of Cass

At the corner location shown on the sketch:

- On _____ found a _____
DATE
- left monument as found lowered monument removed monument (explain)
- On 10-26-04 placed a 1/2" pipe capped R.L.S. 17253
DATE

SKETCH OF REFERENCE TIES



Statement of evidence relative to this corner location is on back of page.

I hereby certify that this document and the data contained herein was prepared by me or under my direct supervision.

[Signature] 11/10/06
SIGNATURE DATE

Registration No. 17253

- Land Surveyor Professional Engineer
- County Surveyor County Engineer

OFFICE OF THE COUNTY RECORDER
County of _____

I hereby certify that this document was filed in the Co. Recorders office at _____ M. on the _____ day of _____ A.D., 20____

County Recorder _____

By _____, Deputy

DOCUMENT NO. _____

Statement of Evidence:

East Quarter Corner Section 2, T. 135, R. 30.

- 1869 - Original Gov't Survey set post.
- 1921 - Horst (microfilm-roll 105 Bk 67 pg 66), sets a 2' x 48' iron monument.
- 2004 - Westwood Professional Services, Inc. sets a 1/2' pipe capped R.L.S. 17253 at the intersection of the fence lines to the east and west and the centerline of 25th Avenue, the ties to which are shown on the face of this certificate.

A000509675
OFFICE OF COUNTY RECORDER
CASS COUNTY MINNESOTA
CERTIFIED, FILED, AND/OR
RECORDED ON
02/08/2006 11:46:14AM

AS DOC #: A000509675
PAGES: 2
REC FEES: \$0.00

KATHRYN M. NORBY
COUNTY RECORDER

BY Kathryn M. Norby
DEPUTY