

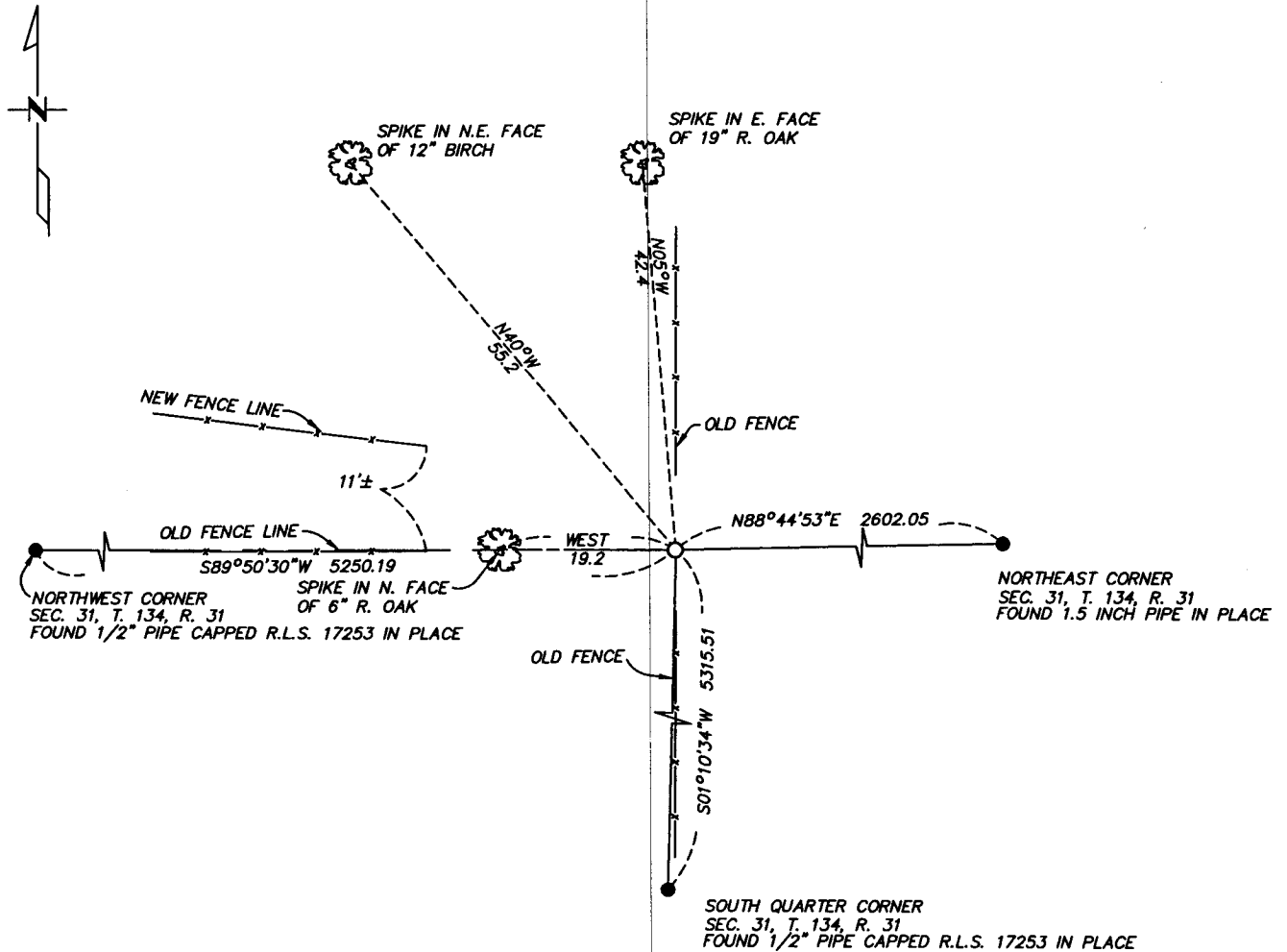
CERTIFICATE OF LOCATION OF GOVERNMENT CORNER

North Quarter _____ Corner of Section 31 , Township 134 , Range 31
5TH Principal Meridian, State of Minnesota, County of _____ Cass

At the corner location shown on the sketch:

- On _____ found a _____
DATE
- left monument as found lowered monument removed monument (explain)
- On 11/16/05 placed a 1/2" Iron pipe with cap #17253
DATE

SKETCH OF REFERENCE TIES



Statement of evidence relative to this corner location is on back of page.

I hereby certify that this document and the data contained herein was prepared by me or under my direct supervision.

[Signature] 11/16/05
SIGNATURE DATE

Registration No. 17253

- Land Surveyor Professional Engineer
- County Surveyor County Engineer

OFFICE OF THE COUNTY RECORDER
County of _____

I hereby certify that this document was filed in the Co. Recorder's office at _____ M. on the _____ day of _____ A.D., 20____

County Recorder _____

By _____, Deputy

DOCUMENT NO. _____

Statement of Evidence

North Quarter Corner, Section 31, T. 134N. R. 31W., 5th P.M.

1869 - Wood post was set for corner.

November 2005 - Westwood Professional Services sets 1/2" pipe capped R.L.S. 17253 at the intersection of the old fence lines, recognized by property owners as the Section Corner, the ties to which are on the front of this certificate.

A000509673

OFFICE OF COUNTY RECORDER
CASS COUNTY MINNESOTA

CERTIFIED, FILED, AND/OR
RECORDED ON
02/08/2006 11:46:12AM

AS DOC #: A000509673
PAGES: 2
REC FEES: \$0.00

KATHRYN M. NORBY
COUNTY RECORDER

BY Kathryn M. Norby
TV DEPUTY