

A000497247

OFFICE OF COUNTY RECORDER  
CASS COUNTY MINNESOTA

CERTIFIED, FILED, AND/OR  
RECORDED ON  
04/15/2005 12:29:14PM

AS DOC #: A000497247  
PAGES: 2  
REC FEES: \$0.00

KATHRYN M. NORBY  
COUNTY RECORDER

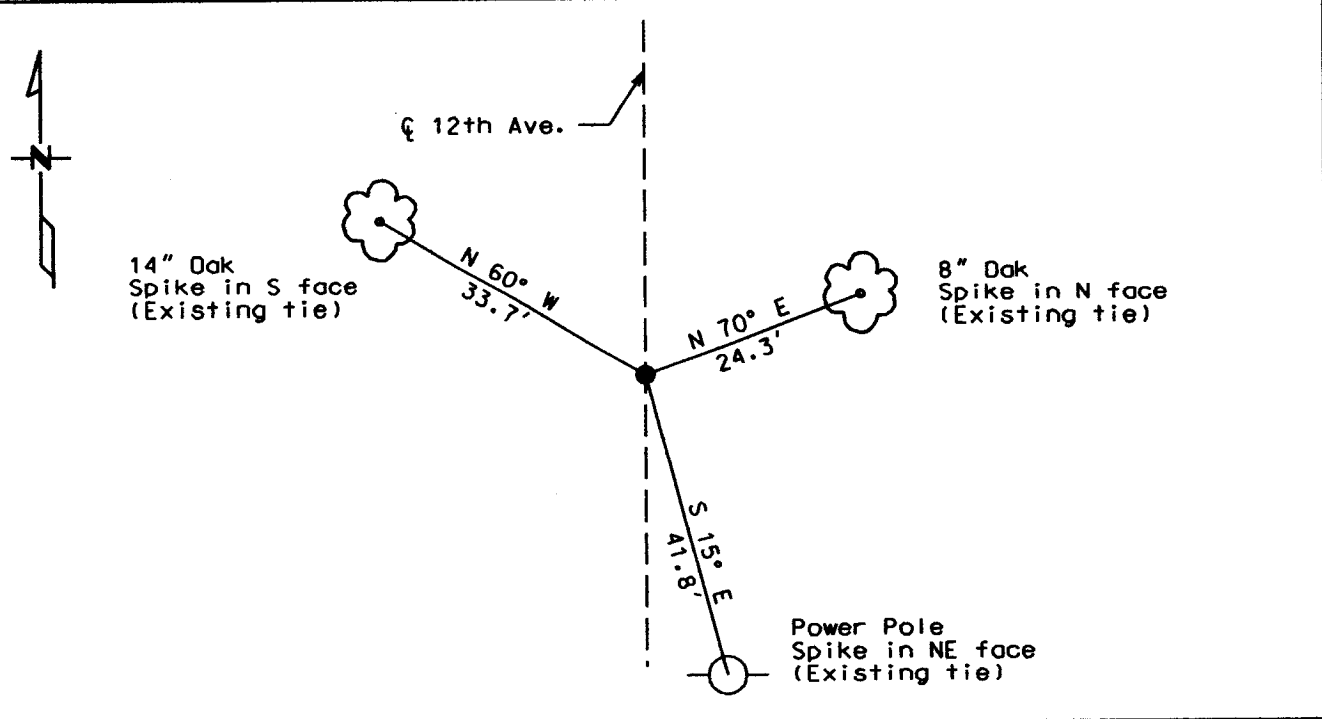
BY Kathryn Norby DEPUTY

### CERTIFICATE OF LOCATION OF GOVERNMENT CORNER

East Quarter Corner of Section 21, Township 137, Range 29  
West Principal Meridian, State of Minnesota, County of Cass

At the corner location shown on the sketch:

- On 6/9/04 found a 1" iron pipe  
DATE
- left monument as found     lowered monument     removed monument (explain)
- On \_\_\_\_\_ placed a \_\_\_\_\_  
DATE



Statement of evidence for this corner location is on back of this page.

I hereby certify that this document was researched and prepared by me or under my direct supervision.

Signature Jawitt McLean Date 3/29/05 License No. 42619  
 Title:  Land Surveyor     Professional Engineer     County Surveyor     County Engineer

**Statement of Evidence:**

**East Quarter Corner Section 21, Township 137 North, Range 29 West**

**The Original Public Land Survey was run in 1865 and a wood post was set to mark the corner. Bearing tree ties were made to two Black Pines.**

**In April 2004 a Kramer Leas DeLeo certificate of survey shows monument recovered.**

**In June 2004 Kramer Leas DeLeo recovered a 1" pipe down 0.3'. Bearing tree ties were made to a Jack Pine, an Oak, and a Power Pole. Kramer Leas DeLeo accepts this position as the correct location for the corner.**

**For details and survey analysis contact Kramer Leas DeLeo in Baxter, Minnesota.**