

A000497240

OFFICE OF COUNTY RECORDER
CASS COUNTY MINNESOTA

CERTIFIED, FILED, AND/OR
RECORDED ON
04/15/2005 12:29:07PM

AS DOC #: A000497240
PAGES: 2
REC FEES: \$0.00

KATHRYN M. NORBY
COUNTY RECORDER

BY Kathryn M. Norby DEPUTY

CERTIFICATE OF LOCATION OF GOVERNMENT CORNER

East Quarter Corner of Section 12, Township 134, Range 30

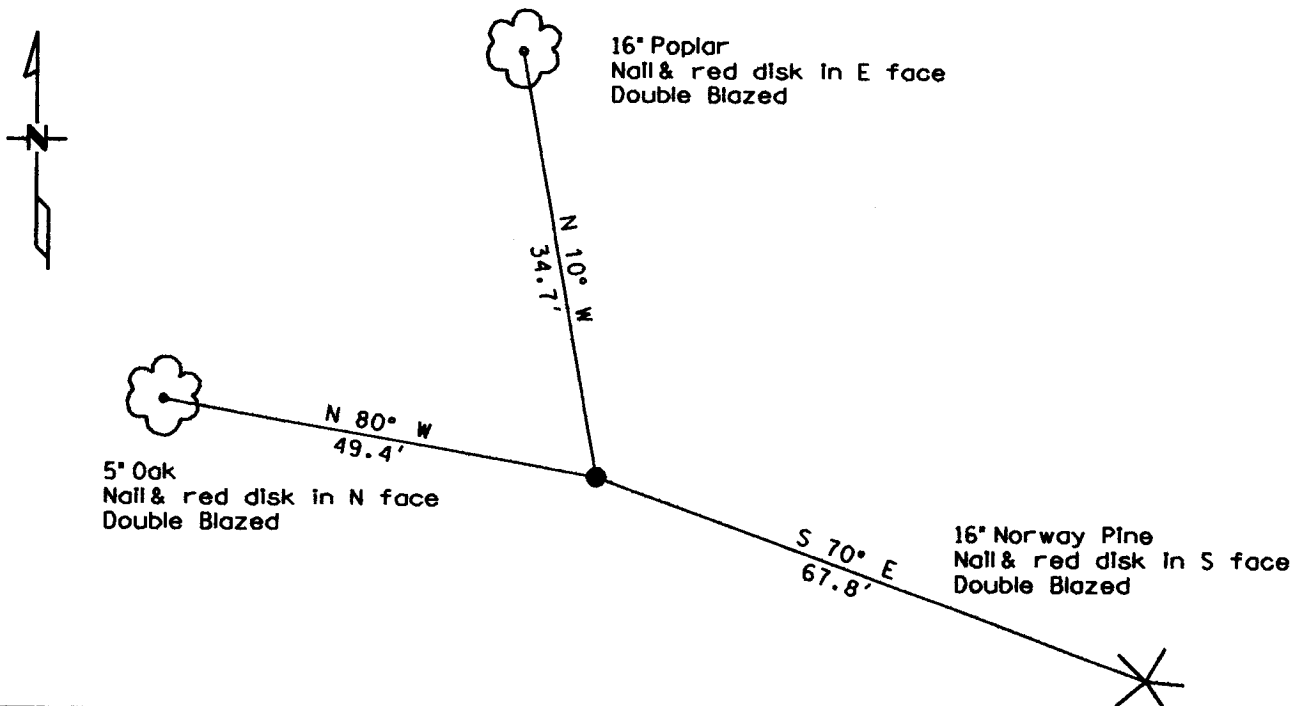
West Principal Meridian, State of Minnesota, County of Cass

At the corner location shown on the sketch:

On 4/14/04 found a 1" pipe with Aluminum Cap stamped "DNR Survey"
DATE

left monument as found lowered monument removed monument (explain)

On _____ placed a _____
DATE



Statement of evidence for this corner location is on back of this page.

I hereby certify that this document was researched and prepared by me or under my direct supervision.

Signature Jane M. Leas Date 3/29/05 License No. 42619

Title: Land Surveyor Professional Engineer County Surveyor County Engineer

Statement of Evidence:

East Quarter Corner Section 12, Township 134 North, Range 30 West

The Original public Land Survey was run in 1858 and a wood post was set to mark the corner. Bearing tree ties were made to two Pine trees.

In 1993 Mr. Lowell Pommerening set a $\frac{3}{4}$ " by 24' rebar with aluminum cap stamped DNR survey marker. Bearing tree ties were made to an Oak, Poplar and a maple.

In 2004 Kramer Leas DeLeo recovered a 1" pipe with an aluminum cap stamped "DNR Survey" and made bearing tree ties to a Poplar, Norway Pine and an Oak. Kramer Leas DeLeo accepts this position as the correct location for the corner.

For details and survey analysis contact Kramer Leas DeLeo in Baxter, Minnesota.