

A000497238

OFFICE OF COUNTY RECORDER
CASS COUNTY MINNESOTA

CERTIFIED, FILED, AND/OR
RECORDED ON
04/15/2005 12:29:05PM

AS DOC #: A000497238
PAGES: 2
REC FEES: \$0.00

KATHRYN M. NORBY
COUNTY RECORDER

BY Kathryn M. Norby DEPUTY

CERTIFICATE OF LOCATION OF GOVERNMENT CORNER

Northeast Corner of Section 9, Township 140, Range 30

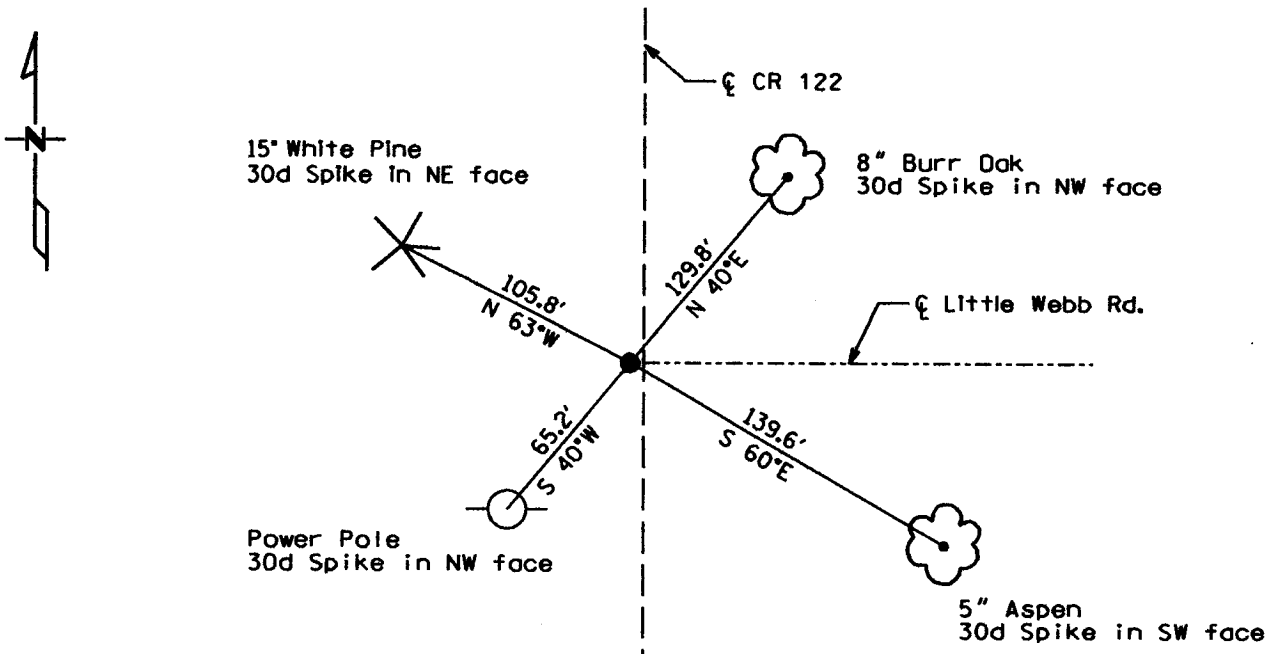
West Principal Meridian, State of Minnesota, County of Cass

At the corner location shown on the sketch:

On 3/05/04 found a 1 1/2" Iron pipe
DATE

left monument as found lowered monument removed monument (explain)

On _____ placed a _____
DATE



Statement of evidence for this corner location is on back of this page.

I hereby certify that this document was researched and prepared by me or under my direct supervision.

Signature Jawon Lee Date 3/29/05 License No. 42619

Title: Land Surveyor Professional Engineer County Surveyor County Engineer

Statement of Evidence:

Northeast Corner Section 9, Township 140 North, Range 30 West

The Original Public Land Survey was run in 1865 and a wood post was set to mark the corner. Bearing tree ties were made to a Norway Pine, a White Pine and an Aspen.

In 1965 the Minnesota Department of Natural Resources recovered a ¾" iron pipe monument. Bearing ties were made to a Power Pole, a Telephone Pole and a Brace Pole.

In 1978 the Cass County Highway Department recovered a ¾" iron pipe monument. Bearing tree ties were made to three Oak Trees, two Birch Trees and a Maple Tree.

Mr. Stevenson recovered a ¾" iron pipe monument. Bearing tree ties were made to a Birch Tree, and a Red Oak.

In 2002 the Cass County Surveyor's Office recovered a 2" iron pipe monument.

In 2003 Mr. Myron Landecker shows a monument recovered on a certificate of survey.

In February 2004 Kramer Leas DeLeo shows a monument recovered on a certificate of survey.

In March 2004 Kramer Leas DeLeo shows a monument recovered on a certificate of survey.

In March 2004 Kramer Leas DeLeo recovered a 1 ½" iron pipe monument and bearing tree ties were made to a White Pine, a Power Pole, an Aspen and a Burr Oak. Kramer Leas DeLeo accepts this position as the correct location for the corner.

For details and survey analysis contact Kramer Leas DeLeo in Baxter, Minnesota.