

A000497237

OFFICE OF COUNTY RECORDER
CASS COUNTY MINNESOTA

CERTIFIED, FILED, AND/OR
RECORDED ON
04/15/2005 12:29:04PM

AS DOC #: A000497237
PAGES: 2
REC FEES: \$0.00

KATHRYN M. NORBY
COUNTY RECORDER

BY Kathryn Norby DEPUTY

CERTIFICATE OF LOCATION OF GOVERNMENT CORNER

East Quarter Corner of Section 4, Township 140, Range 30

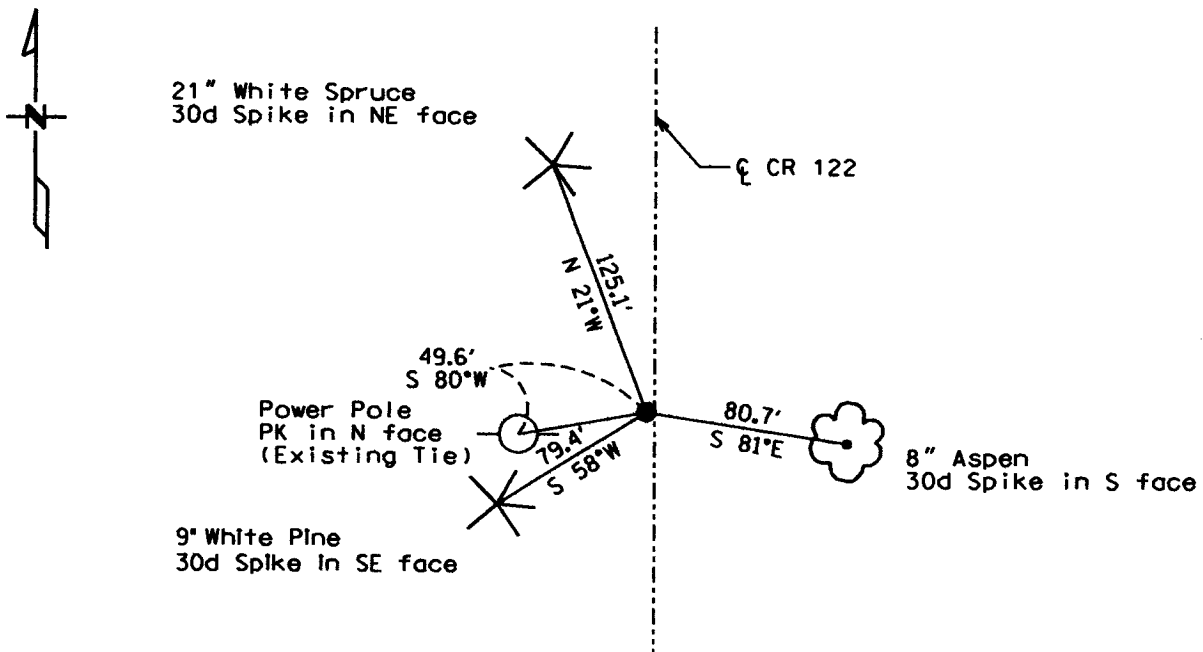
West Principal Meridian, State of Minnesota, County of Cass

At the corner location shown on the sketch:

On 3/05/04 found a PK nail
DATE

left monument as found lowered monument removed monument (explain)

On _____ placed a _____
DATE



Statement of evidence for this corner location is on back of this page.

I hereby certify that this document was researched and prepared by me or under my direct supervision.

Signature [Handwritten Signature] Date 3/29/05 License No. 42619

Title: Land Surveyor Professional Engineer County Surveyor County Engineer

Statement of Evidence:

East Quarter Corner Section 4, Township 140 North, Range 30 West

The Original Public Land Survey was run in 1865 and a wood post was set to mark the corner. Bearing tree ties were made to a Norway Pine and a White Ash.

In 1978 the Cass County Highway Department recovered a 1" iron pipe monument.

Mr. Stevenson recovered a 1 ½" iron pipe monument. Bearing tree ties were made to a Power Pole, a White Pine and a Twin White Oak.

In February 2004, Kramer Leas DeLeo shows a PK nail recovered on a certificate of survey.

In March 2004, Kramer Leas DeLeo shows a PK nail recovered on a certificate of survey.

In March 2004 Kramer Leas DeLeo recovered a PK nail and bearing tree ties were made to a White Pine, a White Spruce, a Aspen, and recovered the existing tie to a power pole from Mr. Stevenson. Kramer Leas DeLeo accepts this position as the correct location for the corner.

For details and survey analysis contact Kramer Leas DeLeo in Baxter, Minnesota.