

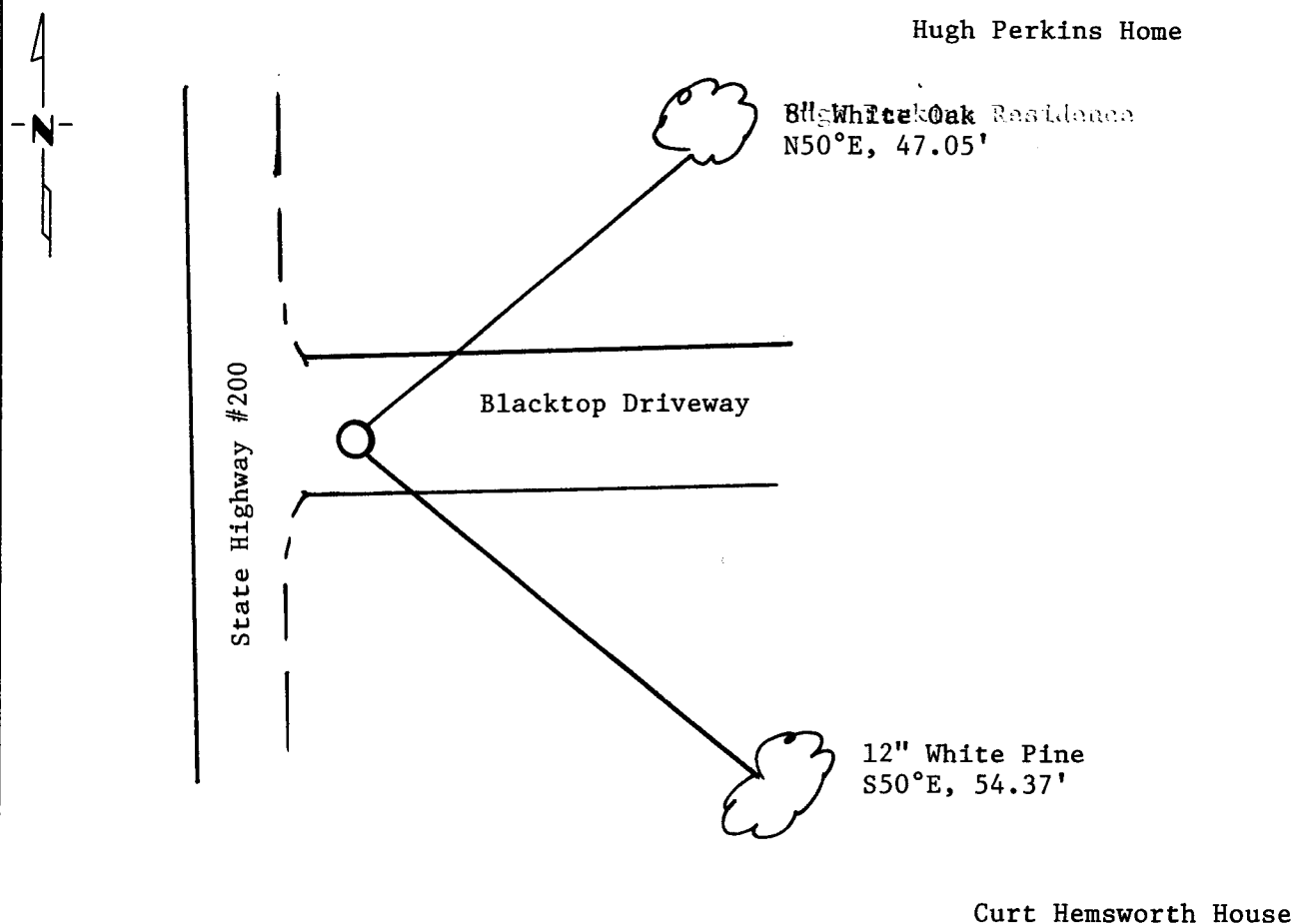
# CERTIFICATE OF LOCATION OF GOVERNMENT CORNER

SECTION \_\_\_\_\_ Corner <sup>to</sup> Sections 2/1, Township 141N, Range 26W, 5th P.M.  
11/12  
 STATE OF MINNESOTA, County of CASS

At the corner location shown on the sketch:

- On 5/16/02 found a Corner is obliterated - no monument located.  
DATE
- left monument as found,  lowered monument,  removed monument (explain)
- On 5/16/02 placed a 1 1/2" x 24" Iron pipe driven flush with the  
DATE surface of the blacktop driveway

## SKETCH OF REFERENCE TIES



Statement of evidence relative to this corner location is on back of page.

I hereby certify that this document and the data contained herein was prepared by me or under my direct supervision.

*Milo E. Stefan* 2/12/05  
SIGNATURE DATE

Registration No. 12261

- Land Surveyor  
 County Surveyor

OFFICE OF THE COUNTY RECORDER

County of \_\_\_\_\_

I hereby certify that this document was filed in the Co. Recorders office at \_\_\_\_\_ .M. on the \_\_\_\_\_ day of \_\_\_\_\_ A.D., 19 \_\_\_\_\_

County Recorder \_\_\_\_\_

By \_\_\_\_\_, Deputy

DOCUMENT NO. \_\_\_\_\_



Statement of Evidence:

ORIGINAL SURVEY

5/1871 - William Allen and Edgar Putnam set a wood post for the corner to Sections 1, 2, 11 and 12; with four bearing trees:  
10" Elm, N73°E, ? Links  
? Spruce, S75°E, 27 Links  
? Aspen, N24°W, 47 Links  
? Tamarack, S37°W, 4? Links

SUBSEQUENT SURVEYS

10/1915 - John M. Greene used this corner to develop the plat of "Eltrich Addition to Remer". This plat called the Quarter Corner common to Sections 1 & 12. Numerous other corners of this plat are in place with distances remarkably close to what Greene indicates on his plat. Monuments that we were able to locate from the Eltrich Plat were the CN 1/16, NW 1/16, CNNW 1/64 of Section 12; the EW 1/16 of Sections 1 & 12 and the Quarter Corner to Sections 1 & 12 (restored and marked with a Cass County cast iron monument). The recovered Eltrich Plat monuments are 2" iron pipes.

Unknown Date - A fence line runs Westerly from the E 1/16 between Sections 2 & 11 to the Quarter Corner to Sections 2 & 11.

By extending this fence line Easterly to the location of this Section Corner and using the Eltrich Plat bearings and distances we fall within .80 feet.

DOT Surveys (1934) - Current Highway #6 centerline was relocated Westerly from the old roadway used in the past. The old roadway is very visible and the Section Corner will lie within this roadway.

I accept the above evidence and restore this Section Corner.

*Milo E. Stefan*



A000496583

OFFICE OF COUNTY RECORDER  
CASS COUNTY MINNESOTA

CERTIFIED, FILED, AND/OR  
RECORDED ON  
03/29/2005 01:28:42PM

AS DOC #: A000496583  
PAGES: 2  
REC FEES: \$0.00

KATHRYN M. NORBY  
COUNTY RECORDER

BY *Kathryn Norby* DEPUTY  
#