

# CERTIFICATE OF LOCATION OF GOVERNMENT CORNER

I hereby certify that this survey, plan, or report was prepared by me or under my direct supervision and that I am a duly Licensed Land Surveyor under the laws of the State of Minnesota.

*Terry L. Freeman*  
 \_\_\_\_\_  
 TERRY L. FREEMAN

Date: 3/29/05 License No: 21367

OFFICE OF THE COUNTY RECORDER  
 County of CASS

I hereby certify that this document was filed in the Office of the County Recorder at \_\_\_\_\_ o'clock \_\_\_\_\_ M. on the \_\_\_\_\_ day of \_\_\_\_\_, 20\_\_\_\_ A.D.

County Recorder \_\_\_\_\_

By: \_\_\_\_\_, Deputy  
 DOCUMENT NO. \_\_\_\_\_

NORTH QUARTER Corner of Section 20, Township 143, Range 31, 5TH P.M.

On 03/09/05 found a CAST IRON MONUMENT UNDER ROAD SURFACE

left monument as found,  lowered monument,  removed monument (explain)

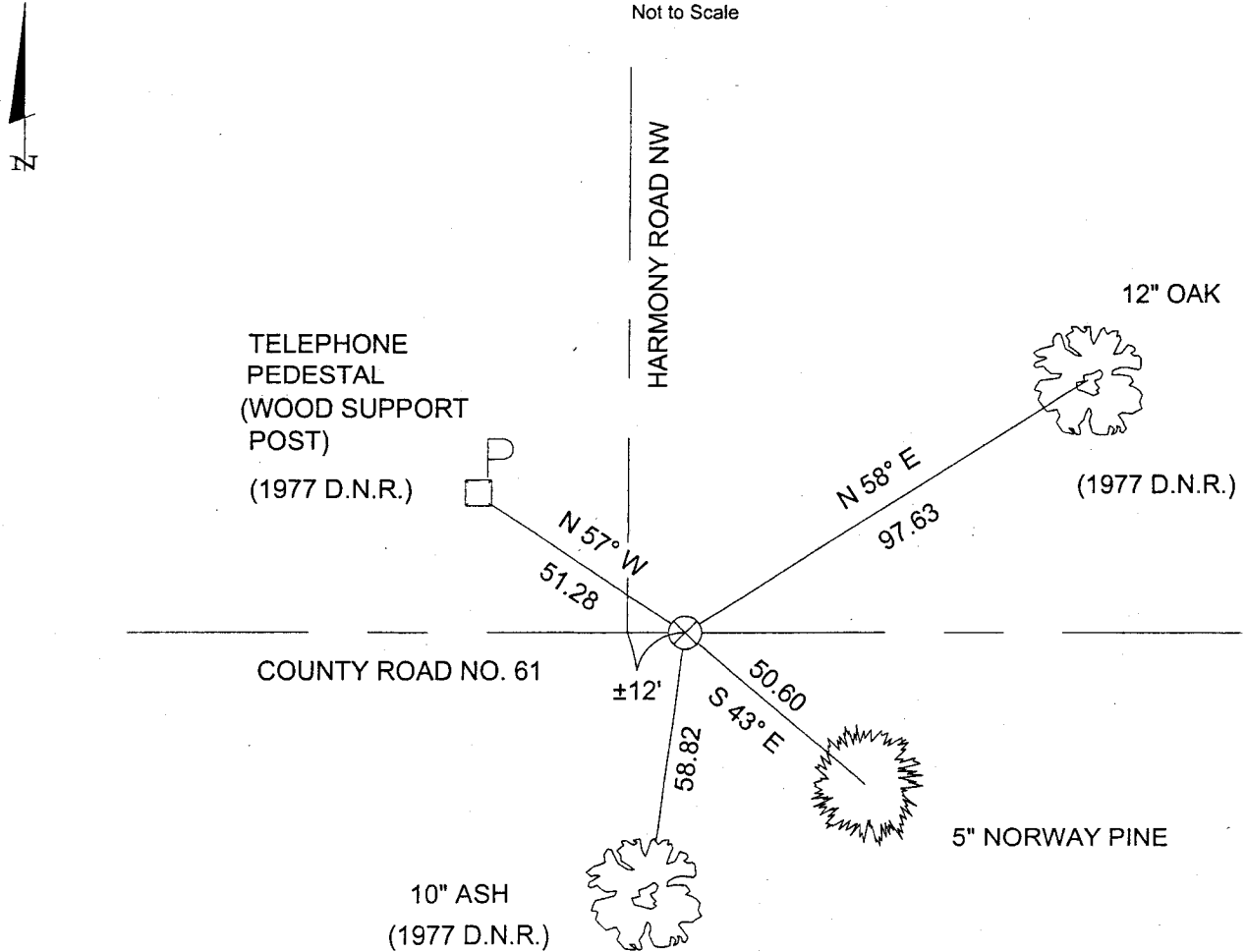
On 03/09/05 placed a PARKER KALON MASONARY NAIL OVER CAST IRON

decl: 5° EAST (ASSUMED)

## SKETCH OF REFERENCE TIES

INDEX NO. N-7

Not to Scale



ALL DISTANCES ARE HORIZONTAL TO DOUBLE-HEADED NAIL IN BASE OF BEARING TREE.

Statement of evidence for this corner position is on the back of this page

North Quarter Corner, Section 20, Township 143  
North, Range 31 West, Cass County, Minnesota

- 1875 B.C. Baldwin, a U.S. Deputy Surveyor, originally established this corner position while surveying the interior subdivision lines and meanders of Township 143 North, Range 31 West. A wood post was set for the quarter corner position with the following witnesses: An 8 inch Aspen, North 55 degrees West, 20 links; A 12 inch Lynn, South 59 degrees West, 14 links.
- 1919 U.S. General Land Office, unable to find any evidence of the original post and bearing trees, set the proportional point for the quarter corner position while performing a re-establishment of a portion of the exterior and subdivision lines, remarking of the allotment corners and other surveys in Township 143 North, Range 31 West. An iron post with brass cap was set, 3 feet long, 1 inch diameter, 28 inches in the ground for the quarter corner position with the following witnesses: A 12 inch Burr Oak, North 34 degrees 15 minutes East, 220 links; A 24 inch burned White Oak stump, South 6 degrees 15 minutes East, 43 links.
- 1925 A Minnesota Highway Department Right-of-Way map on record at the Cass County Recorder's Office shows a 1 inch iron pipe with brass cap 1495.4 feet west of highway centerline.
- 1977 Minnesota Department of Natural Resources, unable to find any evidence of a monument or accessories, placed a county cast iron monument at the split between the northwest and northeast corners of Section 20. This decision was made after discussion with R.F. Schneider, RLS#5740, and Bruce Burton, RLS#11309 who had used the split on paper in other surveys in Section 20. The following witnesses were established: A Telephone Junction Box Post, northwesterly, 51.50 feet; A 6 inch Oak, northeasterly 97.93 feet; A 3 inch - 6 inch Triple Oak, southeasterly, 39.31 feet; A 5 inch Ash, southerly 58.82 feet. Bottle caps set with nails in objects.
- 2005 A Landecker and Associates, Inc. survey crew found the northwesterly, northeasterly and southerly DNR witnesses. The monument was located below the bituminous road surface and accepted as the North Quarter Corner position. A mag nail was set over the in-place monument position with the following accessories: A 5 inch Norway Pine, South 50 degrees East, 62.00 feet; A 12 inch Oak, North 58 degrees East, 97.63 feet (no bottle cap found, DNR distance=97.93 feet); A Telephone Junction Box Post, North 57 degrees West, 51.28 feet (found the DNR nail and bottle cap and distance of 51.50 checks, set double-headed nail below bottle cap).

A000496571

OFFICE OF COUNTY RECORDER  
CASS COUNTY MINNESOTA

CERTIFIED, FILED, AND/OR  
RECORDED ON  
03/29/2005 01:28:30PM

AS DOC #: A000496571  
PAGES: 3  
REC FEES: \$0.00

KATHRYN M. NORBY  
COUNTY RECORDER

BY Kathryn M. Norby DEPUTY  
H