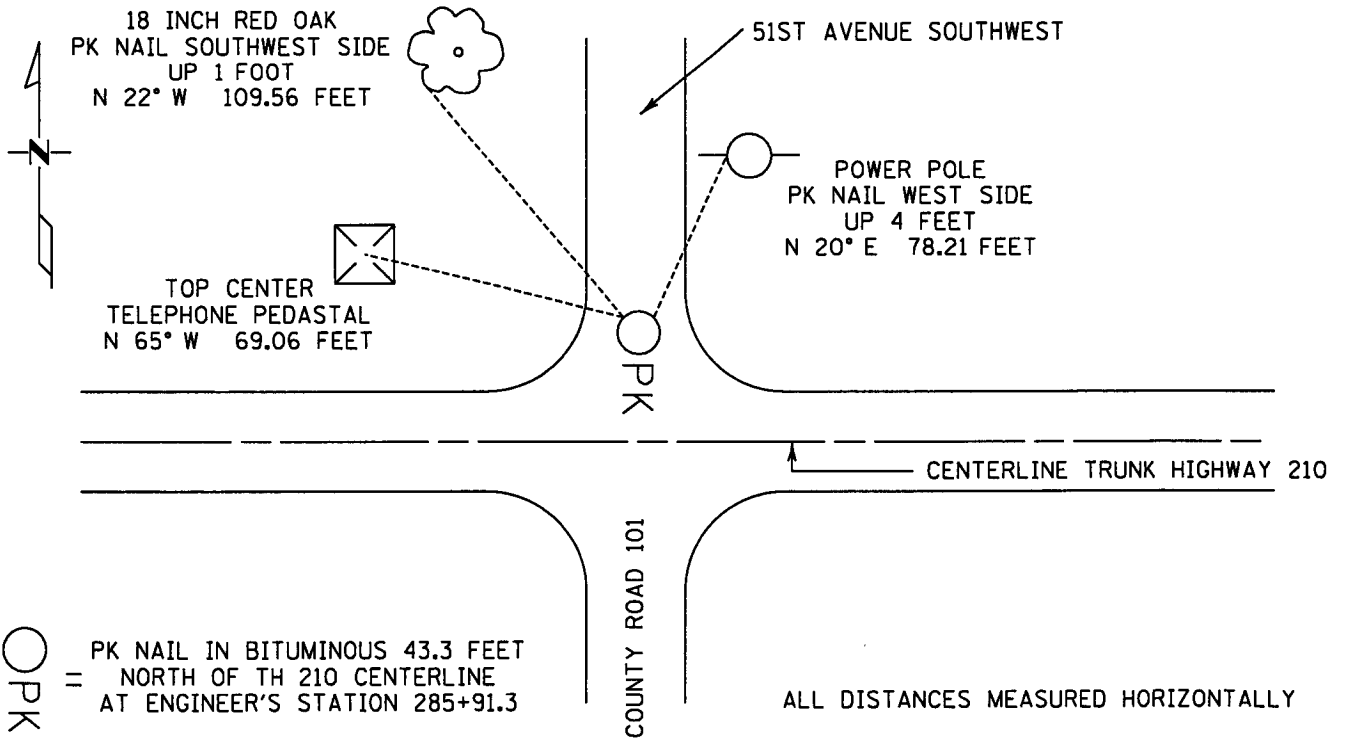


CERTIFICATE OF LOCATION OF GOVERNMENT CORNER

NORTH QUARTER Corner of Section 14, Township 133 N., Range 31 W.
5TH Principal Meridian, State of Minnesota, County of CASS

At the corner location shown on the sketch:

- On 12-03-2004 found a MAGNETIC HUM BENEATH BITUMINOUS SURFACE
DATE 43.3 FEET NORTH OF CENTERLINE T.H. 210 AT ENGINEER'S STATION 285+91.3
- left monument as found lowered monument removed monument (explain)
- On 12-03-2004 placed a PK NAIL ON TOP OF BITUMINOUS SURFACE
DATE 43.3 FEET NORTH OF CENTERLINE T.H. 210 AT ENGINEER'S STATION 285+91.3



Statement of evidence for this corner location is on back of this page.

I hereby certify that this document was researched and prepared by me or under my direct supervision.

Signature Kevin J. Metz Date 12-14-2004 License No. 40343
 Title: Land Surveyor Professional Engineer County Surveyor County Engineer

Statement of Evidence: North Quarter Corner of Section 14, Township 133 North, Range 31 West, 5th Principal Meridian, Cass County, Minnesota.

The original Government Survey was run in 1863, by Mr. George B. Wright, Deputy Surveyor, and a wood post was set, with two Aspen Bearing Trees as accessories.

On the Minnesota Department of Highways Right of Way Map for S.P. 1115, T.H. 210=2, dated May, 1945, the Corner is shown 43.3 feet North of Engineer's Station 285+91.3.

A road survey, for Bungo Township, Road T-133, mentions a pipe 43.3 feet North of the Centerline of T.H. 210. The survey commences at this pipe, then goes South, to the Centerline of T.H. 210, the POB of the road order, then returns North to the pipe, and proceeds North through Section 11.

On December 3, 2004, Mr. Kevin J. Metz, Minnesota Registration Number 40343, found a strong Magnetic hum, under the bituminous surface, at a position 43.3 feet North of T.H. 210, Engineer's Station 285+91.3. A PK brand nail was set in the bituminous surface, and new ties were taken, as shown on the front of this document. I accept this position as the correct location for the Corner.

A000494921

OFFICE OF COUNTY RECORDER
CASS COUNTY MINNESOTA

CERTIFIED, FILED, AND/OR
RECORDED ON
02/10/2005 12:48:39PM

AS DOC #: A000494921
PAGES: 2
REC FEES: \$0.00

KATHRYN M. NORBY
COUNTY RECORDER

BY Kathryn M. Norby DEPUTY
HV