

CERTIFICATE OF LOCATION OF GOVERNMENT CORNER

North Quarter _____ Corner of Section 18 , Township 133 , Range 29
5TH Principal Meridian, State of Minnesota, County of Cass

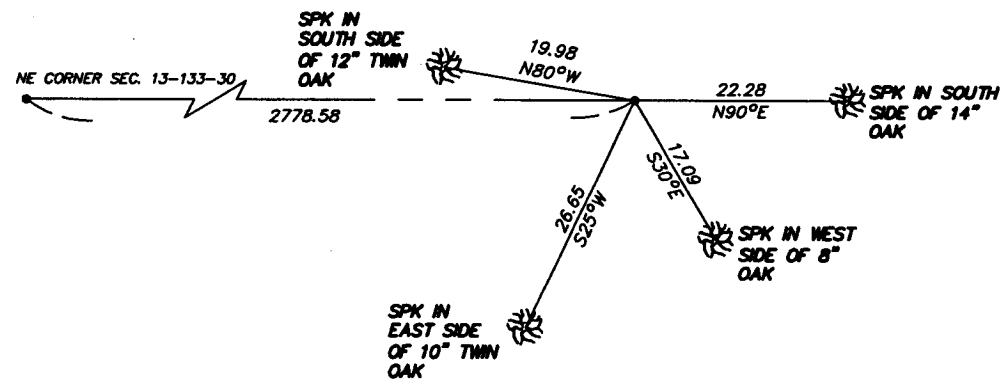
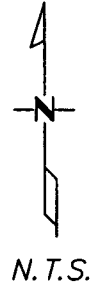
At the corner location shown on the sketch:

On 10/16/04 found a 4' Iron pipe
DATE

left monument as found lowered monument removed monument (explain)

On _____ placed a _____
DATE

SKETCH OF REFERENCE TIES



Statement of evidence relative to this corner location is on back of page.

I hereby certify that this document and the data contained herein was prepared by me or under my direct supervision.

Paul Grinn SIGNATURE 11/16/05 DATE
Registration No. 17253

- Land Surveyor Professional Engineer
- County Surveyor County Engineer

OFFICE OF THE COUNTY RECORDER
County of _____

I hereby certify that this document was filed in the Co. Recorders office at _____ M. on the _____ day of _____ A.D., 20____

County Recorder _____
By _____, Deputy
DOCUMENT NO. _____

Statement of Evidence

North Quarter, Section 18, T. 133N. R. 29W., 5th P.M.

1870 - Wood post was set for corner

1912 - John Curo set iron pipe from old Gov't B.T. County Survey Record Book "A", P. 434-443.

1972 - Dean Anderson plat of SCEARCYVILLE shows monument.

1974 - Dean Anderson plat of FIRST ADDITION TO SCEARCYVILLE shows monument.

2000 - Bruce Grivna (#17253) shows monument found on Certificate of Survey.

2004 - Bruce Grivna (#17253) shows monument found on Certificate of Survey.

10/16/04 - Westwood Professional Services, Inc. finds iron monument in place and pulls ties as shown on the face of front certificate.

A000493621
OFFICE OF COUNTY RECORDER
CASS COUNTY MINNESOTA
CERTIFIED, FILED, AND/OR
RECORDED ON
01/06/2005 02:07:52PM

AS DOC #: A000493621
PAGES: 2
REC FEES: \$0.00

KATHRYN M. NORBY
COUNTY RECORDER
BY Kathryn M. Norby DEPUTY
HW